



NICTD West Lake Corridor Project Construction Update

Week of 10.17.2023 & 10.24.2023

Hammond

- **Closures**
 - Russel Street (between Hohman Avenue and Lyman Avenue)
 - Russel Street is closed at West Lake Corridor
 - Follow posted detour.
 - State Street
 - Closure is currently active.
 - Willow Court is open.
 - Douglas Street
 - Full Closure is currently active until 11/12/2023.
 - See attached detour plan.
 - Sheffield Avenue
 - Full Closure to begin 10/23/2023 through 11/19/2023.
 - See attached detour plan.
- **Utility Relocation, Sewer & Water**
 - Drainage Removals/Installation
 - Future Hammond Gateway Station
 - ⑩ No impact to vehicular traffic
 - Sheffield Avenue
 - ⑩ See attached detour to Sheffield Avenue.
 - Douglas Street – Drainage Installation
 - ⑩ See attached detour to Douglas Street.
- **Monon Trail Closure**
 - Monon closed from 173rd Street to Little Calumet River & Waltham Street to Douglas Street.
 - Closed indefinitely until rail operation has been completed/pedestrian bridge is installed.
 - No connection to Lackawanna Trail.
- **Rail Construction**
 - Track work ongoing from 80/94 to Waltham.
 - No impact to vehicular. Equipment will cross intersections with roadway flagger.
 - Track work from Future Hammond Station to Sheffield Ave

**For additional project information please visit:
www.nictdwestlake.com or www.fhp-rb.com**

- See attached detour plan.
 - Track work ongoing at Douglas Street
 - See attached detour plan.
- Hanover Street will be permanently closed between Wabash and Sheffield Avenues.
- Dearborn at Gostlin Street will be closed permanently.
- On-going fence installation from Waltham to 165th Street.
 - No impact to vehicular traffic.
- **Substructure Work for Bridges, Elevated Structures, and Retaining Walls**
 - Bridge over State Street
 - Install waterproofing on bridge deck.
 - ⑩ No impact to vehicular traffic.
 - Bridge over Sibley Street
 - Install waterproofing on bridge deck.
 - ⑩ No impact to vehicular traffic.
 - Bridge erection over CSX Railroad (near Sheffield & Hanover)
 - Install waterproofing on bridge deck.
 - ⑩ No impact to vehicular traffic.
 - Bridge over Hohman Avenue
 - Installing waterproofing starting 10/19/2023.
 - ⑩ No impact to vehicular traffic.
 - Bridge over Willow Court
 - Concrete deck work starting 10/25/2023.
 - ⑩ No impact to vehicular traffic.

Munster

- **Closures**
 - Manor Avenue (Between Ridge Road and Broadmoor Avenue) – Closure Active
 - See attached detour.
- **Retaining Wall between 45th Street and Superior Ave**
 - Backfill of retaining wall. Installing geopiers.
 - Trucking operations through the Town of Munster, minimal impact to vehicular traffic.
- **Retaining Wall/Structure between Fisher Street and 45th Street**
 - Retaining Wall work continues.
 - Crane being assembled starting 10/17/23, for structure erection.
 - No impact to vehicular traffic.
- **Fisher – Ridge along Monon Trail**
 - Rail Contractor is stockpiling stone ballast near South Street along Monon trail. Rail Contractor currently welding and setting rail.
- **Monon Trail** will be closed for the foreseeable future from Little Calumet River to Fisher Street
 - Closure will last until rail operation is complete from Fisher-Ridge.
 - Closure will last until retaining walls are complete from Ridge to Little Calumet.

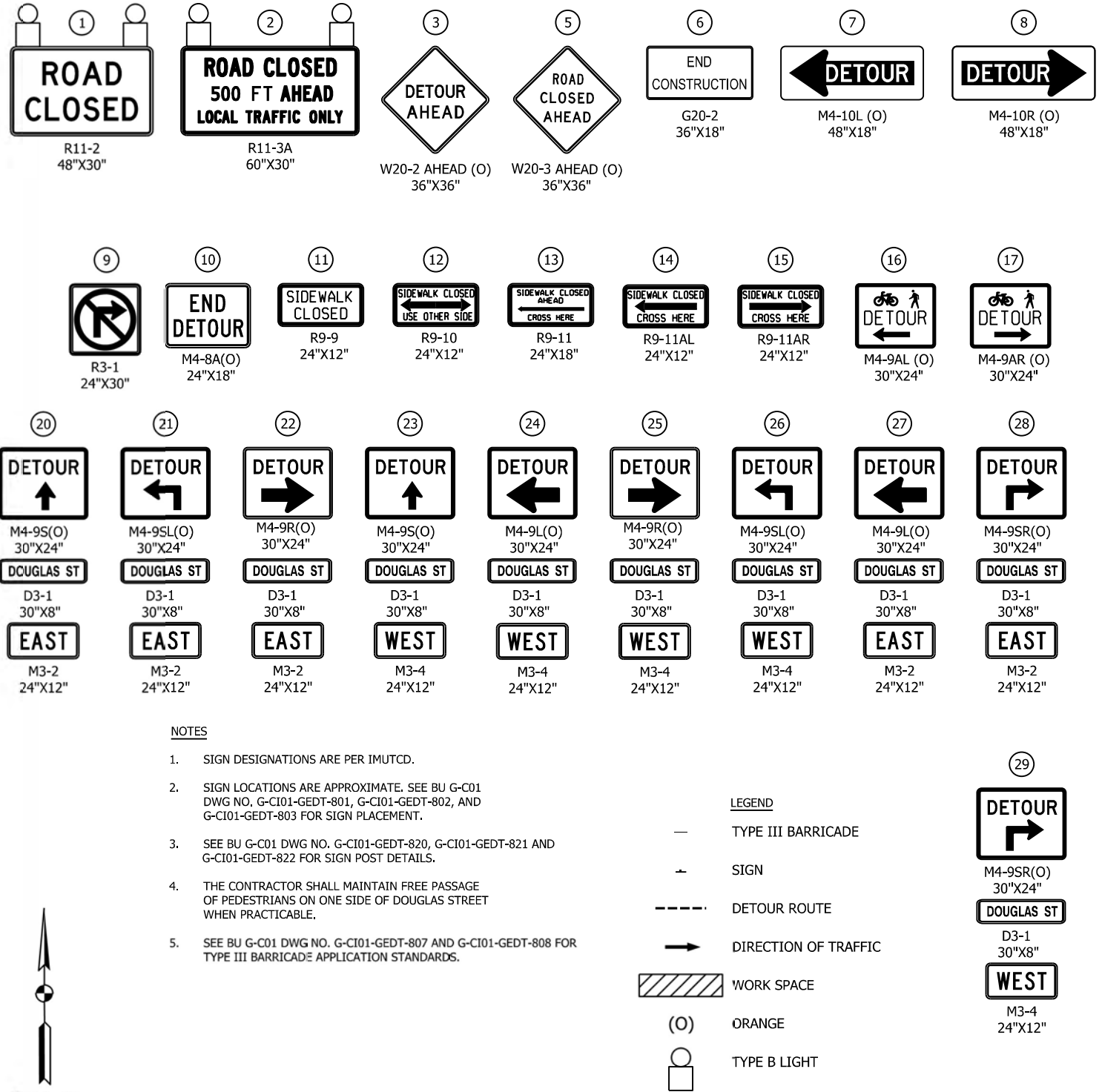
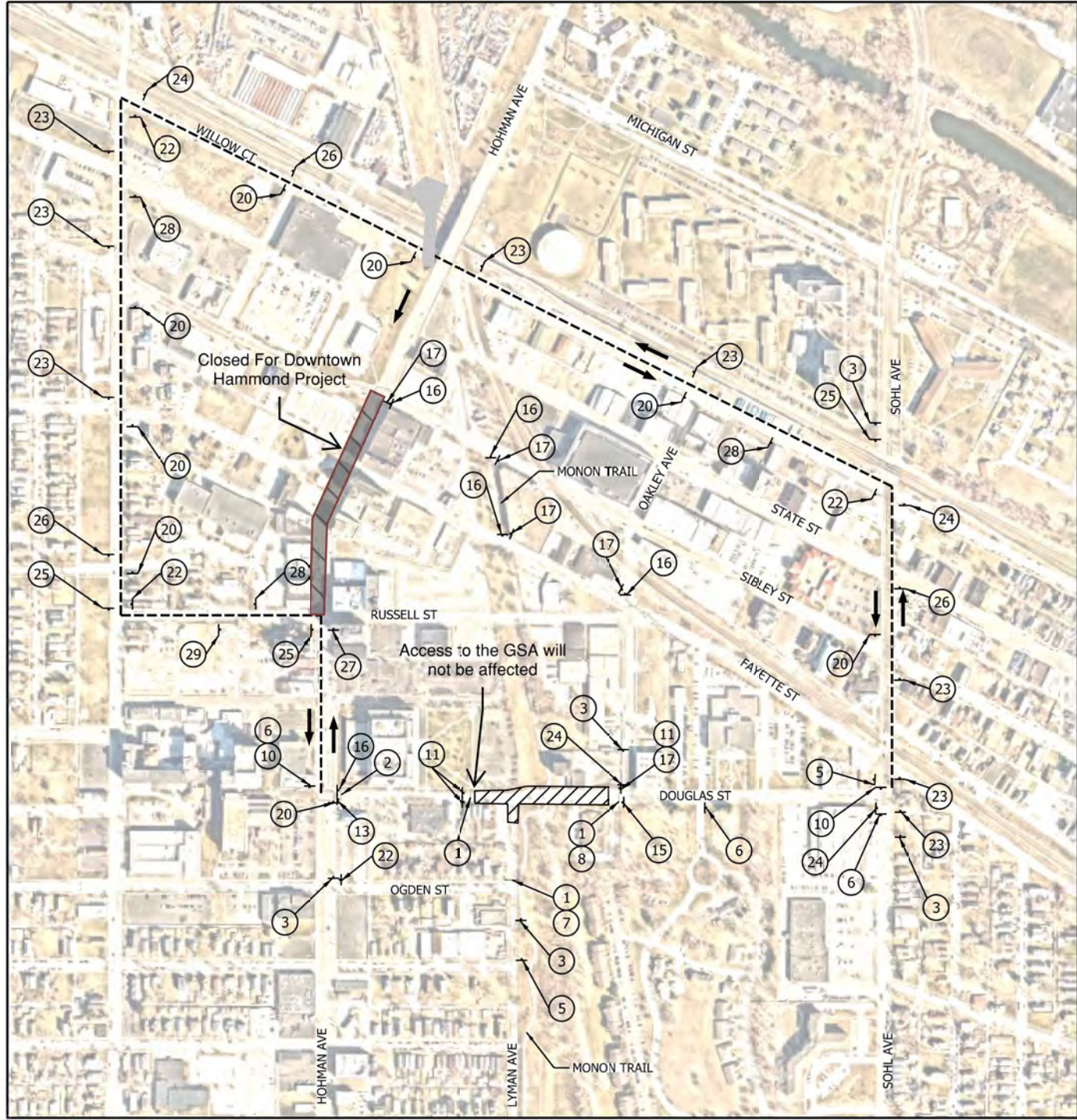
**For additional project information please visit:
www.nictdwestlake.com or www.fhp-rb.com**

- **Structure work at the Little Calumet River.**
 - Crane has been assembled for Bridge over Little Calumet River.
- **Station Work**
 - Munster-Ridge station
 - Electrical work ongoing.
 - Station parking lot grading and pond excavation.
- **Utility Relocation: Storm, Sanitary & Water**
 - Drainage installation on Manor Avenue (Between Broadmoor and Ridge) and within future Munster-Ridge Parking Lot.
 - See attached Manor Avenue closure.
- **Munster-Dyer East Parking Lot**
 - Pump Station Construction
 - Concrete work ongoing

Dyer

- Munster-Dyer West Parking Lot
 - Continue excavation, grading and drainage at West lot and pond.
 - No impact to vehicular traffic.

**For additional project information please visit:
www.nictdwestlake.com or www.fhp-rb.com**

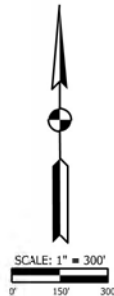


NOTES

- SIGN DESIGNATIONS ARE PER IMUTCD.
- SIGN LOCATIONS ARE APPROXIMATE. SEE BU G-C01 DWG NO. G-CI01-GEDT-801, G-CI01-GEDT-802, AND G-CI01-GEDT-803 FOR SIGN PLACEMENT.
- SEE BU G-C01 DWG NO. G-CI01-GEDT-820, G-CI01-GEDT-821 AND G-CI01-GEDT-822 FOR SIGN POST DETAILS.
- THE CONTRACTOR SHALL MAINTAIN FREE PASSAGE OF PEDESTRIANS ON ONE SIDE OF DOUGLAS STREET WHEN PRACTICABLE.
- SEE BU G-C01 DWG NO. G-CI01-GEDT-807 AND G-CI01-GEDT-808 FOR TYPE III BARRICADE APPLICATION STANDARDS.

LEGEND

- TYPE III BARRICADE
- SIGN
- DETOUR ROUTE
- DIRECTION OF TRAFFIC
- WORK SPACE
- ORANGE
- TYPE B LIGHT



PLOT DATE: 10/10/2023 PLOT TIME: 1:34:38 PM
FILE NAME: SHT-N-CI05-MTPL-01.dgn

FHP F.H. PASCHEN
R3 RAGNAR BENSON
JOINT VENTURE

Jacobs

REVISIONS		
ISSUE	DATE	DESCRIPTION

NICD
NORTHERN INDIANA COMMUTER
TRANSPORTATION DISTRICT
33 East Highway 12
Chesterton, Indiana 46304

WEST LAKE
CORRIDOR
DYER TO HAMMOND, INDIANA

BU:	N-CI05
DESIGNED:	A. SIPKOVSKY
DRAWN:	S. KOZLOWSKI
CHECKED:	A. SIPKOVSKY
SCALE:	1"=300'
DATE:	05/03/2022

DWG NO. N-CI05-MTPL-01

**MAINTENANCE OF TRAFFIC
DETOUR PLAN - DOUGLAS STREET**

FOR CONSTRUCTION

SHEET NO. **OF**

PLOT DATE: 2/9/2022 PLOT TIME: 3:03:37 PM
 FILE NAME: S:\PROJECTS\2022\N-CI04-MTPL-01.dwg

FHP F.H. PASCHEN
 RAGNAR BENSON
 JOINT VENTURE

Jacobs

REVISIONS		
ISSUE	DATE	DESCRIPTION

NICD
 NORTHERN INDIANA COMMUTER
 TRANSPORTATION DISTRICT
 33 East Highway 12
 Cheserton, Indiana 46304

WEST LAKE
 CORRIDOR
 DYER TO HAMMOND, INDIANA



BU: JAC/JBA
 DESIGNED: A. SOKOVSKY
 DRAWN: S. KUMAR
 CHECKED: A. SOKOVSKY
 SCALE: 1"=300'
 DATE: 12/13/2021

FINAL RFC PLANS DWG NO. N-CI04-MTPL-01

MAINTENANCE OF TRAFFIC
 DETOUR PLAN - SHEFFIELD AVENUE

FOR CONSTRUCTION SHEET NO. 8 OF 77



① ROAD CLOSED R11-2 48"x30"	② ROAD CLOSED 1 MILE AHEAD LOCAL TRAFFIC ONLY R11-3A 60"x30"	③ ROAD CLOSED TO THRU TRAFFIC R11-4 60"x30"	④ DETOUR AHEAD W20-2 AHEAD (O) 36"x36"	⑤ ROAD CLOSED AHEAD W20-3 AHEAD (O) 36"x36"
⑥ END CONSTRUCTION G20-2 36"x18"	⑦ DETOUR M4-10L (O) 48"x18"	⑧ DETOUR M4-10R (O) 48"x18"	⑨ NO RIGHT TURN R3-1 24"x30"	⑩ NO LEFT TURN R3-2 24"x30"
⑪ END DETOUR M4-8A 24"x18"	⑫ SIDEWALK CLOSED R9-9 24"x12"	⑳ DETOUR M4-9S(O) 30"x24"	㉑ DETOUR M4-9L(O) 30"x24"	㉒ DETOUR M4-9R(O) 30"x24"
㉓ DETOUR M4-9SL(O) 30"x24"	㉔ DETOUR M4-9SR(O) 30"x24"	㉕ DETOUR M4-9S(O) 30"x24"	㉖ DETOUR M4-9L(O) 30"x24"	
SHEFFIELD AVE D3-1 44"x8"	SHEFFIELD AVE D3-1 44"x8"	SHEFFIELD AVE D3-1 44"x8"	SHEFFIELD AVE D3-1 44"x8"	SHEFFIELD AVE D3-1 44"x8"
NORTH M3-1	NORTH M3-1	NORTH M3-1	NORTH M3-1	SOUTH M3-3
㉗ DETOUR M4-9R(O) 30"x24"	㉘ DETOUR M4-9SL(O) 30"x24"	㉙ DETOUR M4-9SR(O) 30"x24"		
SHEFFIELD AVE D3-1 44"x8"	SHEFFIELD AVE D3-1 44"x8"	SHEFFIELD AVE D3-1 44"x8"		
SOUTH M3-3	SOUTH M3-3	SOUTH M3-3		

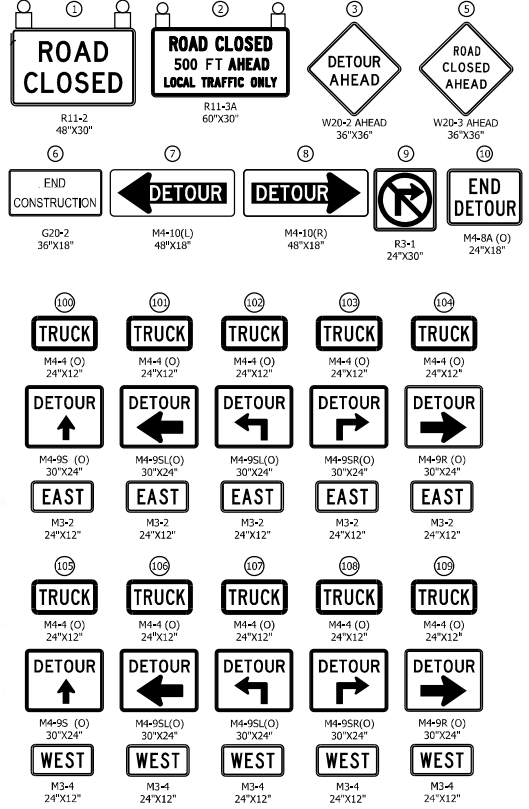
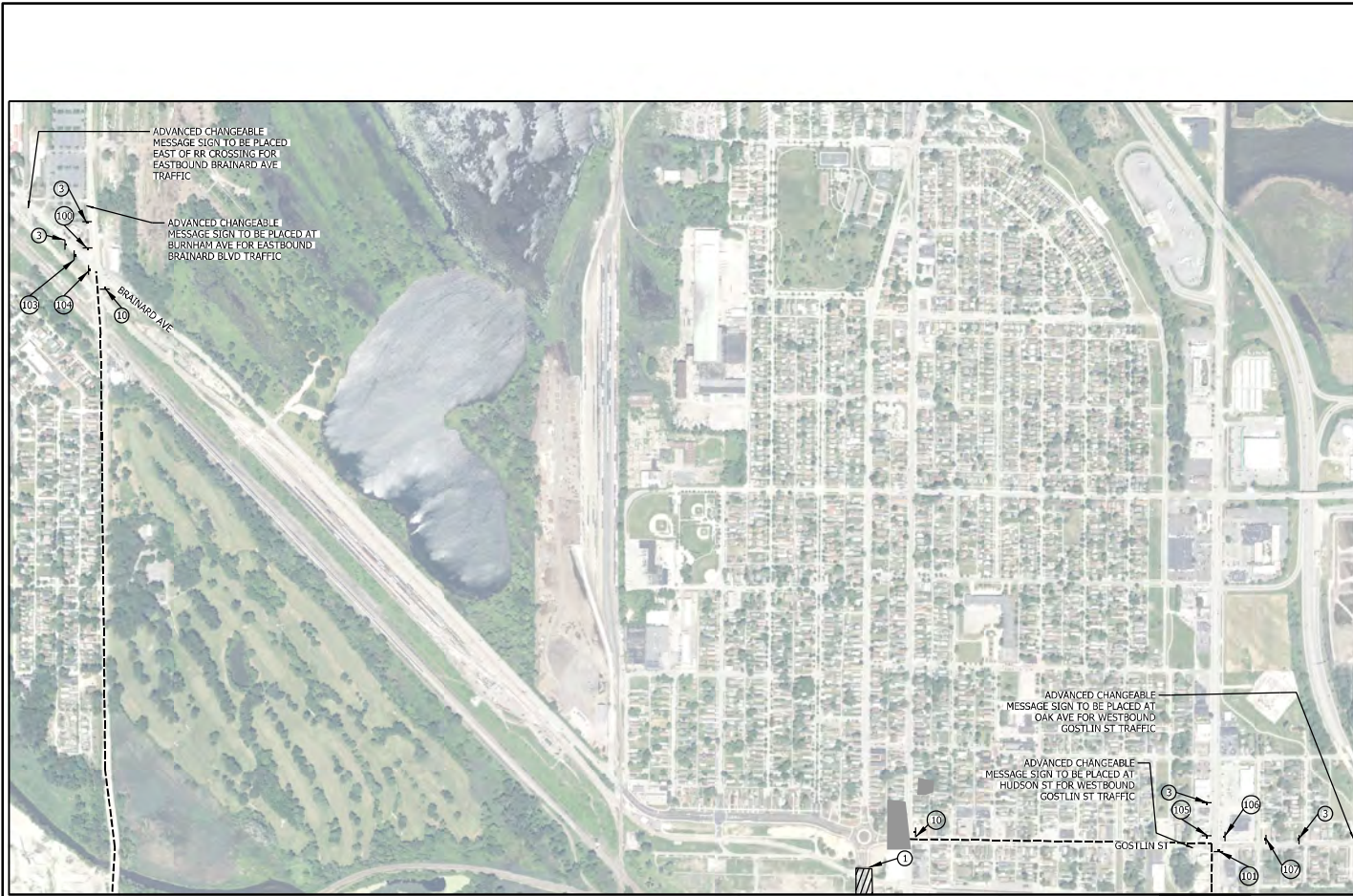


NOTES

- SIGN DESIGNATIONS AS ARE PER IMUTCD.
- SIGN LOCATIONS ARE APPROXIMATE. SEE BU G-C01 DWG NO. G-CI01-GEDT-818 FOR SIGN PLACEMENT.
- SEE BU G-C01 DWG NO. G-CI01-GEDT-820 FOR SIGN POST DETAILS.
- CONTRACTOR SHALL NOT CLOSE HOHMAN AND SHEFFIELD AT THE SAME TIME UNLESS APPROVED BY THE HAMMOND CITY ENGINEER OR DESIGNEE.

LEGEND

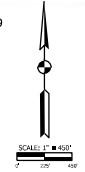
- TYPE III BARRICADE
- - - SIGN
- - - - DETOUR ROUTE
- DIRECTION OF TRAFFIC
- ▨ WORK SPACE
- (O) ORANGE



- NOTES**
- SIGN DESIGNATIONS ARE PER IMUTCD.
 - SIGN LOCATIONS ARE APPROXIMATE. SEE BU G-C01 DWG. NO. G-C101-GEDT-806 FOR SIGN PLACEMENT.
 - SEE BU G-C01 DWG. NO. G-C101-GEDT-824A FOR SIGN POST DETAILS.
 - SEE BU G-C01 DWG. NO. G-C101-GEDT-807 AND G-C101-GEDT-808 FOR TYPE III BARRICADE SIGN PLACEMENT.
 - ADVANCED CHANGEABLE MESSAGE SIGNS TO READ "HOHMAN AVE CLOSED | TRUCKS FOLLOW DETOUR"
- LEGEND**
- TYPE III BARRICADE
 - ▲ SIGN
 - DETOUR ROUTE
 - DIRECTION OF TRAFFIC
 - ▨ WORK SPACE
 - (O) ORANGE
 - TYPE B LIGHT

MATCHLINE
SEE SHT-N-C101-MTPL-9

MATCHLINE
SEE SHT-N-C101-MTPL-9



PLOT DATE: 10/11/2023 PLOT TIME: 12:26:59 PM
 FILE NAME: SHT-N-C101-MTPL-099.dwg



REVISIONS		
ISSUE	DATE	DESCRIPTION

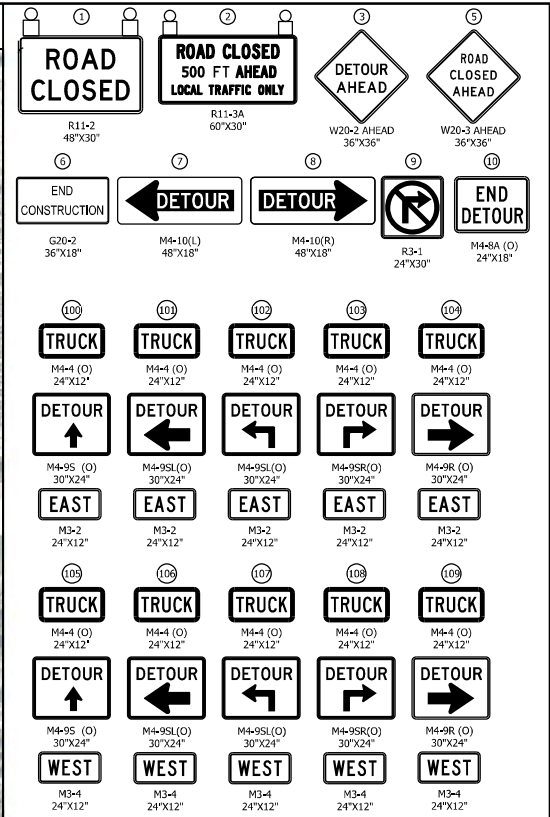
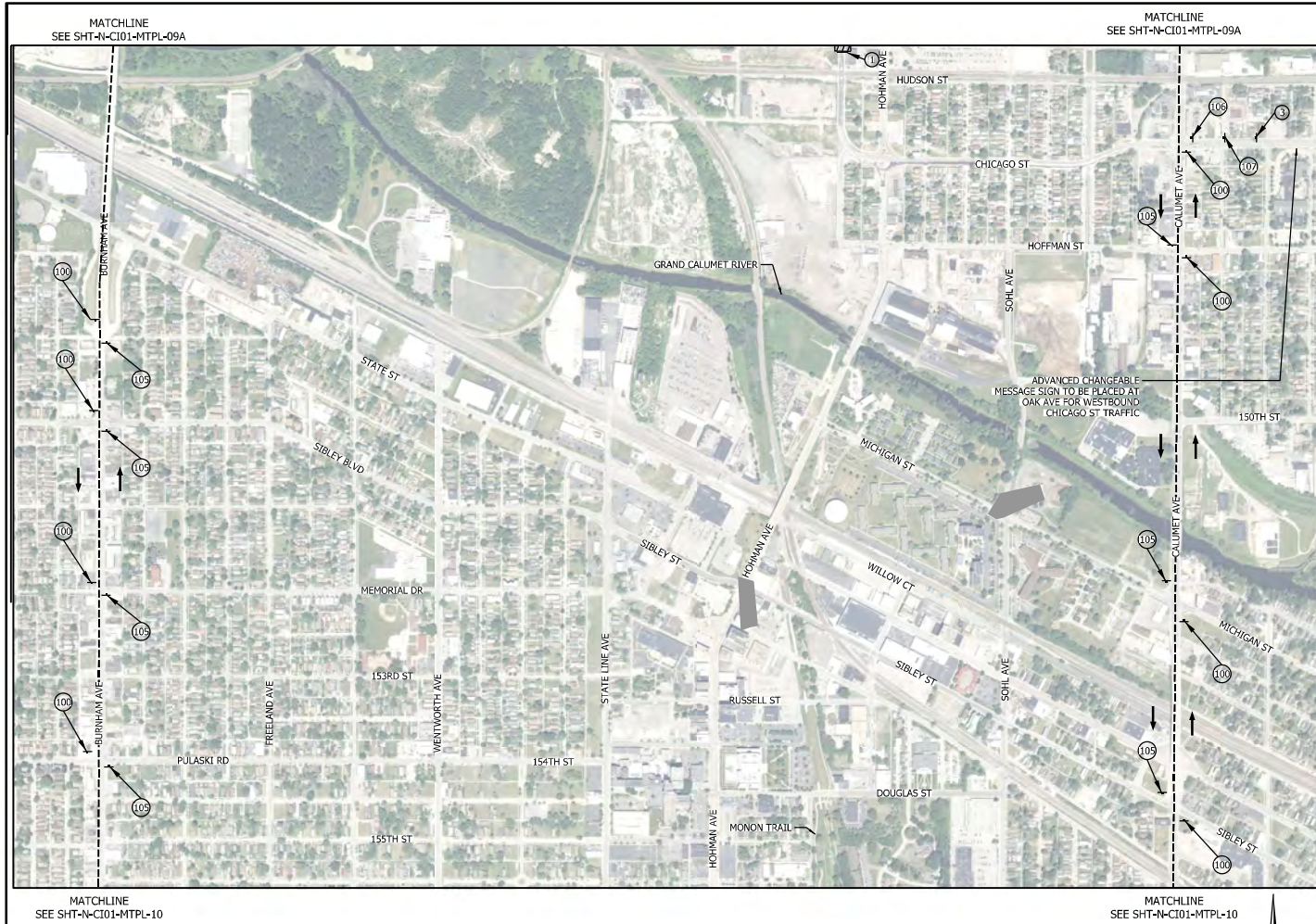


DESIGNED: A. SIKPOVSKY
DRAWN: S. KOZLOWSKI
CHECKED: A. SIKPOVSKY
SCALE: 1" = 50'
DATE: 10/20/2021

DWG NO. N-C101-MTPL-09A

**MAINTENANCE OF TRAFFIC
DETOUR PLAN - TRUCK ROUTE
SHEFFIELD AVENUE CLOSURE**

FOR CONSTRUCTION SHEET NO. **OF**



- NOTES**
- SIGN DESIGNATIONS ARE PER MUTCD.
 - SIGN LOCATIONS ARE APPROXIMATE. SEE BU G-C01 DWG, NO. G-C101-GEDT-806 FOR SIGN PLACEMENT.
 - SEE BU G-C01 DWG, NO. G-C101-GEDT-824A FOR SIGN POST DETAILS.
 - SEE BU G-C01 DWG, NO. G-C101-GEDT-807 AND G-C101-GEDT-808 FOR TYPE III BARRICADE SIGN PLACEMENT.
 - ADVANCED CHANGEABLE MESSAGE SIGNS TO READ "HOHMAN AVE CLOSED | TRUCKS FOLLOW DETOUR"
- LEGEND**
- TYPE III BARRICADE
 - - - SIGN
 - - - DETOUR ROUTE
 - DIRECTION OF TRAFFIC
 - ▨ WORK SPACE
 - (O) ORANGE
 - Ⓛ TYPE B LIGHT

10/11/2023 PLOT DATE: 12:28:01 PM
 FILE NAME: SHT-N-C101-MTPL-09.dwg

**F.H. PASCHEN
RAGNAR BENSON
JOINT VENTURE**

REVISIONS		
ISSUE	DATE	DESCRIPTION

**NORTHERN INDIANA COMMUTER
TRANSPORTATION DISTRICT**
 33 East Highway 12
 Chesterton, Indiana 46304

DYER TO HAMMOND, INDIANA

BU:	N-C101
DESIGNED:	A. SIKPOVSKY
DRAWN:	S. KOZLOWSKI
CHECKED:	A. SIKPOVSKY
SCALE:	1"=450'
DATE:	10/20/2021

DWG NO. **N-C101-MTPL-09**

**MAINTENANCE OF TRAFFIC
DETOUR PLAN - TRUCK ROUTE
SHEFFIELD AVENUE CLOSURE**

FOR CONSTRUCTION SHEET NO. **OF**

PLOT DATE: 1/17/2021 PLOT TIME: 1:01:21 PM
 FILE NAME: S:\PROJECTS\2019\2019-01\2019-01-01\2019-01-01.dwg



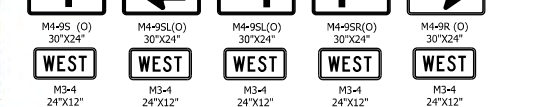
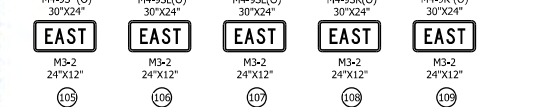
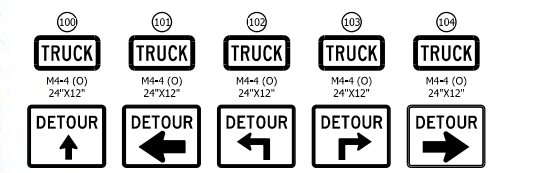
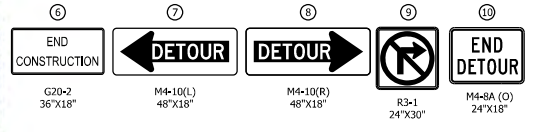
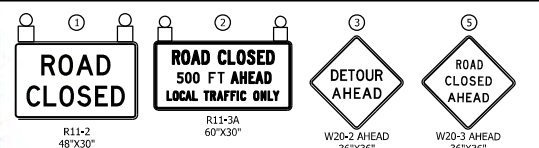
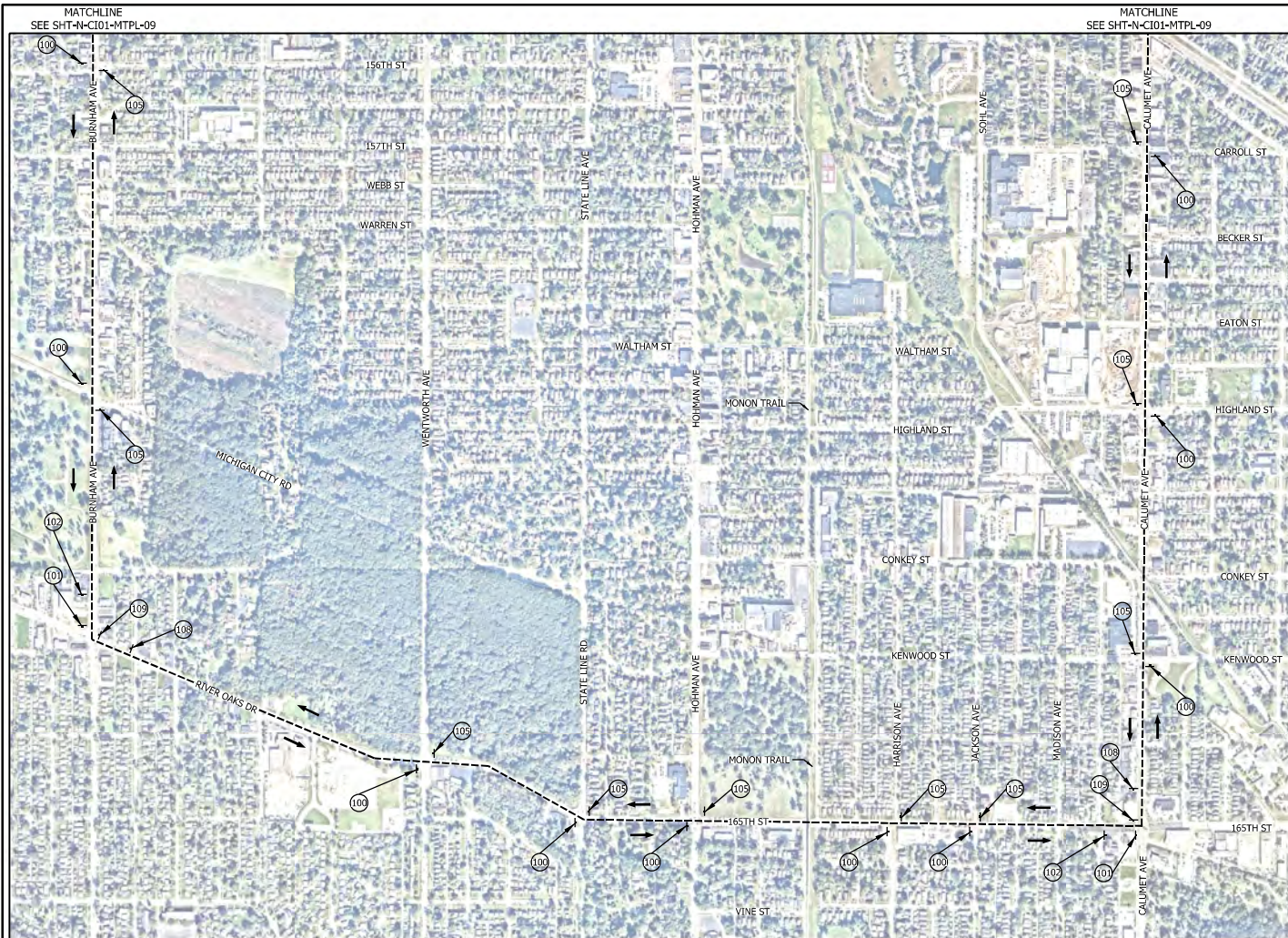
REVISIONS		
ISSUE	DATE	DESCRIPTION



BU:	N-C101
DESIGNED:	A. SIPKOVSKY
DRAWN:	S. KOZLOWSKI
CHECKED:	A. SIPKOVSKY
SCALE:	1"=450'
DATE:	10/20/2021

**MAINTENANCE OF TRAFFIC
 DETOUR PLAN - TRUCK ROUTE
 SHEFFIELD AVENUE CLOSURE**

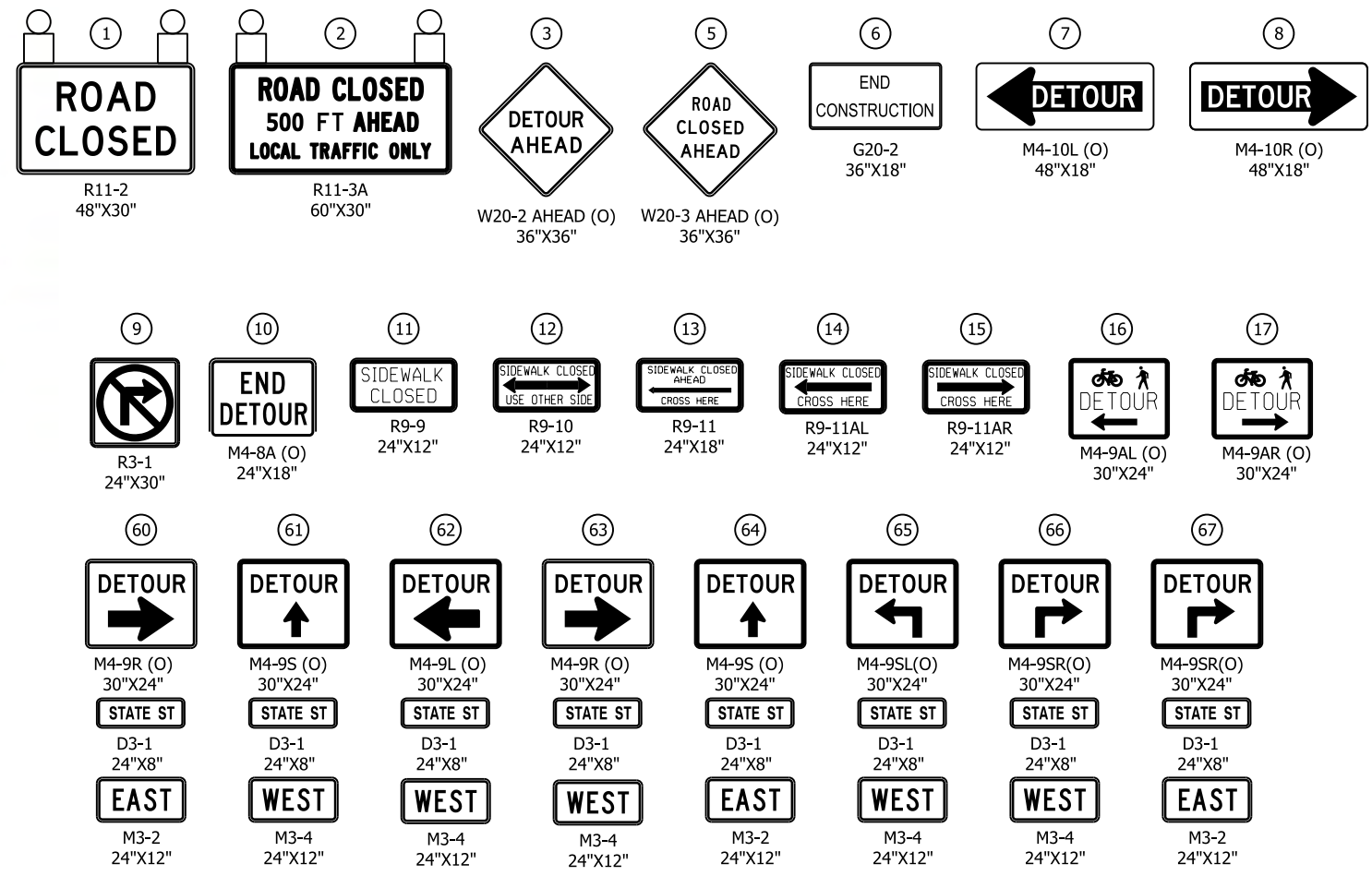
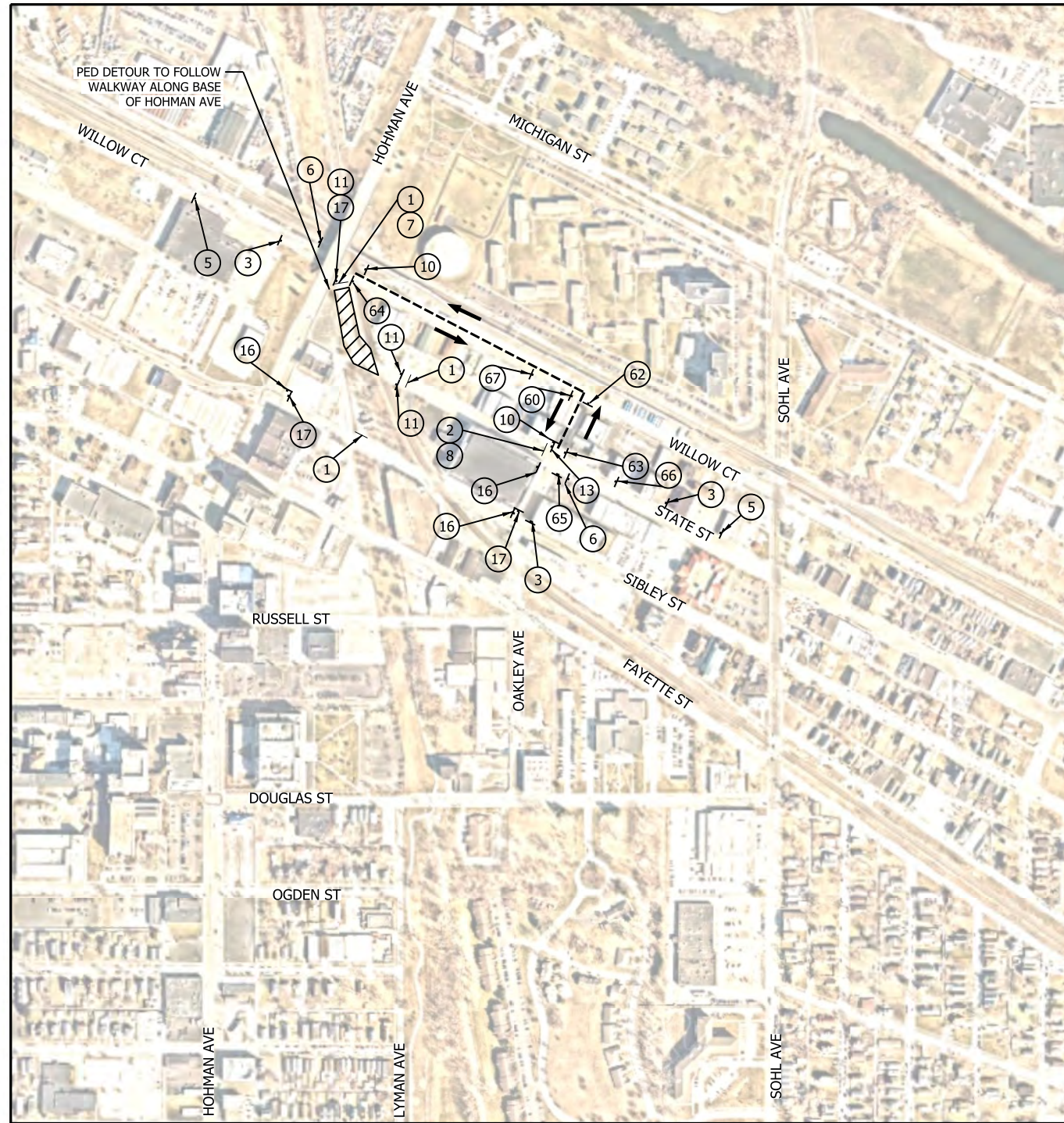
FOR CONSTRUCTION SHEET NO. **OF**



- NOTES**
- SIGN DESIGNATIONS ARE PER MUTCD.
 - SIGN LOCATIONS ARE APPROXIMATE. SEE BU G-01 DWG. NO. G-C101-GEDT-806 FOR SIGN PLACEMENT.
 - SEE BU G-01 DWG. NO. G-C101-GEDT-824 FOR SIGN POST DETAILS.
 - SEE BU G-01 DWG. NO. G-C101-GEDT-807 AND G-C101-GEDT-808 FOR TYPE III BARRICADE SIGN PLACEMENT.
 - ADVANCED CHANGEABLE MESSAGE SIGNS TO READ "HOHMAN AVE CLOSED | TRUCKS FOLLOW DETOUR"
- LEGEND**
- TYPE III BARRICADE
 - SIGN
 - - - DETOUR ROUTE
 - DIRECTION OF TRAFFIC
 - ▨ WORK SPACE
 - (O) ORANGE
 - 🚚 TYPE B LIGHT



DWG NO. **N-C101-MTPL-10**

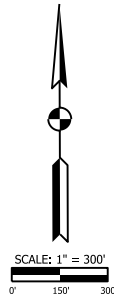


NOTES

- SIGN DESIGNATIONS ARE PER IMUTCD.
- SIGN LOCATIONS ARE APPROXIMATE. SEE BU G-C01 DWG. NO. G-CI01-GEDT-828 FOR SIGN PLACEMENT.
- SEE BU G-C01 DWG. NO. G-CI01-GEDT-820, G-CI01-GEDT-821 AND G-CI01-GEDT-822 FOR SIGN POST DETAILS.
- SEE BU G-C01 DWG. NO. G-CI01-GEDT-807 AND G-CI01-GEDT-808 FOR TYPE III BARRICADE APPLICATION STANDARDS.
- THE CONTRACTOR SHALL MAINTAIN FREE PASSAGE OF PEDESTRIANS ON ONE SIDE OF STATE STREET WHEN PRACTICABLE.
- TRAFFIC SIGNALS AT STATE ST AND WILLOW CT TO BE BAGGED DURING CLOSURE OF STATE ST.

LEGEND

- TYPE III BARRICADE
- SIGN
- - - - DETOUR ROUTE
- DIRECTION OF TRAFFIC
- ▨ WORK SPACE
- (O) ORANGE
- TYPE B LIGHT



PLOT DATE: 11/3/2021 PLOT TIME: 1:01:08 PM
FILE NAME: SHT-N-CI01-MTPL-05.dgn



REVISIONS		
ISSUE	DATE	DESCRIPTION

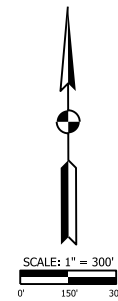
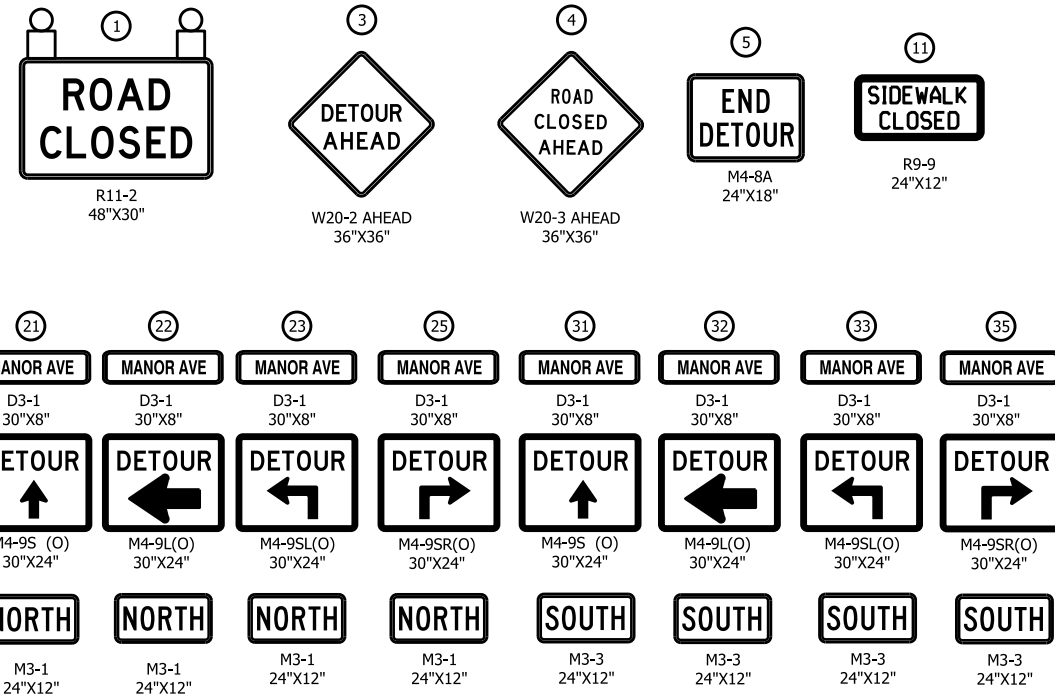


BU:	N-CI01
DESIGNED:	A. SIPKOVSKY
DRAWN:	S. KOZLOWSKI
CHECKED:	A. SIPKOVSKY
SCALE:	1"=300'
DATE:	10/20/2021

FINAL RFC PLANS DWG NO. N-CI01-MTPL-05

**MAINTENANCE OF TRAFFIC
DETOUR PLAN - STATE STREET**

FOR CONSTRUCTION SHEET NO. **15 OF 78**



NOTES

- SIGN DESIGNATIONS ARE PER IMUTCD.
- SIGN LOCATIONS ARE APPROXIMATE. SEE BU G-C01 DWG. NO. [G-CI01-GEDT-806](#) FOR SIGN PLACEMENT.
- SEE BU G-C01 DWG. NO. [G-CI01-GEDT-824A](#) FOR SIGN POST DETAILS.
- SEE BU G-C01 DWG. NO. [G-CI01-GEDT-807](#) AND [G-CI01-GEDT-808](#) FOR TYPE III BARRICADE SIGN PLACEMENT.
- THIS DETOUR WILL BE USED FOR MANOR AVE RECONSTRUCTION.

LEGEND

- TYPE III BARRICADE
- SIGN
- - - - - DETOUR ROUTE
- DIRECTION OF TRAFFIC
- ▨ WORK SPACE
- (O) ORANGE
- TYPE B LIGHT

PLOT DATE: 12/20/2022 PLOT TIME: 11:32:08 AM
FILE NAME: SHT-S-RD07-MTPL-02.dgn

FHP | F.H. PASCHEN
RAGNAR BENSON
JOINT VENTURE



REVISIONS		
ISSUE	DATE	DESCRIPTION

NICD
NORTHERN INDIANA COMMUTER
TRANSPORTATION DISTRICT
33 East Highway 12
Chesterton, Indiana 46304

WEST LAKE
CORRIDOR
DYER TO HAMMOND, INDIANA

REGISTERED PROFESSIONAL ENGINEER
SAYYA S. TALLAMRAJU
PE10809037
STATE OF INDIANA
DATE: 12/21/2022

BU:	S-RD07
DESIGNED:	S.TALLAMRAJU
DRAWN:	P.STEPANOVIC
CHECKED:	J.SPAIN
SCALE:	1"=300'
DATE:	01/06/2023

FINAL RFC PLANS | DWG NO. S-RD07-MTPL-02

**MAINTENANCE OF TRAFFIC
DETOUR PLAN - MANOR AVENUE**

FOR CONSTRUCTION | SHEET NO. 8 OF 66