



---

## **NICTD West Lake Corridor Project Construction Update**

**Week of 8.14.2023 & 8.21.2023**

### **Hammond**

- **Closures**
  - Russel Street (between Hohman Avenue and Lyman Avenue)
    - Russel Street is closed at West Lake Corridor
    - Follow posted detour.
  - State Street
    - Closure is currently active.
    - See attached detour.
  - Hohman Avenue
    - Closure is currently active.
    - See attached detour for vehicles and pedestrians.
- **Utility Relocation, Sewer & Water**
  - Drainage Removals/Installation
    - Future Hammond Gateway Station
      - Ⓢ No impact to vehicular traffic
- **Monon Trail Closure**
  - Monon closed from Douglas Street to Little Calumet River.
    - Closed indefinitely until rail operation has been complete.
  - No connection to Lackawanna Trail.
- **Rail Construction**
  - Track work ongoing from 80/94 to Waltham.
    - No impact to vehicular. Equipment will cross intersections with roadway flagger.
- Hanover Street will be permanently closed between Wabash and Sheffield Avenues.
- Dearborn at Gostlin Street will be closed permanently.
- On-going fence installation from Waltham to 165<sup>th</sup> Street.
  - No impact to vehicular traffic.
- **Substructure Work for Bridges, Elevated Structures, and Retaining Walls**
  - Bridge erection over Hohman Avenue (Michigan Avenue).
    - Closure currently active.
  - Bridge erection over IHB railroad
    - Construction falls within State Street closure. See attached detour plan.

**For additional project information please visit:  
[www.nictdwestlake.com](http://www.nictdwestlake.com) or [www.fhp-rb.com](http://www.fhp-rb.com)**

## **Munster**

- **Closures**
  - Manor Avenue (Between Ridge Road and Broadmoor Avenue) – Closure Active
    - Active closure that will extend the duration of Ridge Road Closure.
    - See attached detour.
  - Ridge Road
    - Phased Construction Closure active
    - See attached lane closure details and Construction Notice.
    - See attached Phase 2 closure details.
    - Full Closure of Ridge Road will be September 5<sup>th</sup>. See attached detour plan.
- **Retaining Wall between Little Calumet River and Broadmoor**
  - Stone distribution for track installation.
  - Trucking operations through the Town of Munster, minimal impact to vehicular traffic.
- **Retaining Wall between 45<sup>th</sup> Street and Superior Ave**
  - Backfill of retaining wall. Installing geopiers.
  - Trucking operations through the Town of Munster, minimal impact to vehicular traffic.
- **Retaining Wall between Fisher Street and 45<sup>th</sup> Street**
  - Retaining Wall work continues
  - No impact to vehicular traffic.
- **Fisher – Ridge along Monon Trail**
  - Rail Contractor is stockpiling stone ballast near South Street along Monon trail. Rail Contractor currently welding and setting rail.
    - Trucking operations through the Town of Munster, minimal impact to vehicular traffic.
- **Monon Trail** will be closed for the foreseeable future from Little Calumet River to Fisher Street
  - Closure will last until rail operation is complete from Fisher-Ridge.
  - Closure will last until retaining walls are complete from Ridge to Little Calumet.
- **Structure work at the Little Calumet River.**
  - Crane has been assembled for Bridge over Little Calumet River.
    - Work will not begin until August 28<sup>th</sup>.
  - Trucking operations on Manor Avenue, minimal impact to vehicular traffic.
- **Station Work**
  - Munster-Ridge station
    - Electrical work ongoing.
- **Utility Relocation: Storm, Sanitary & Water**
  - Drainage Installation near 45<sup>th</sup> Street
    - No impact to vehicular traffic
- Munster-Dyer East Parking Lot

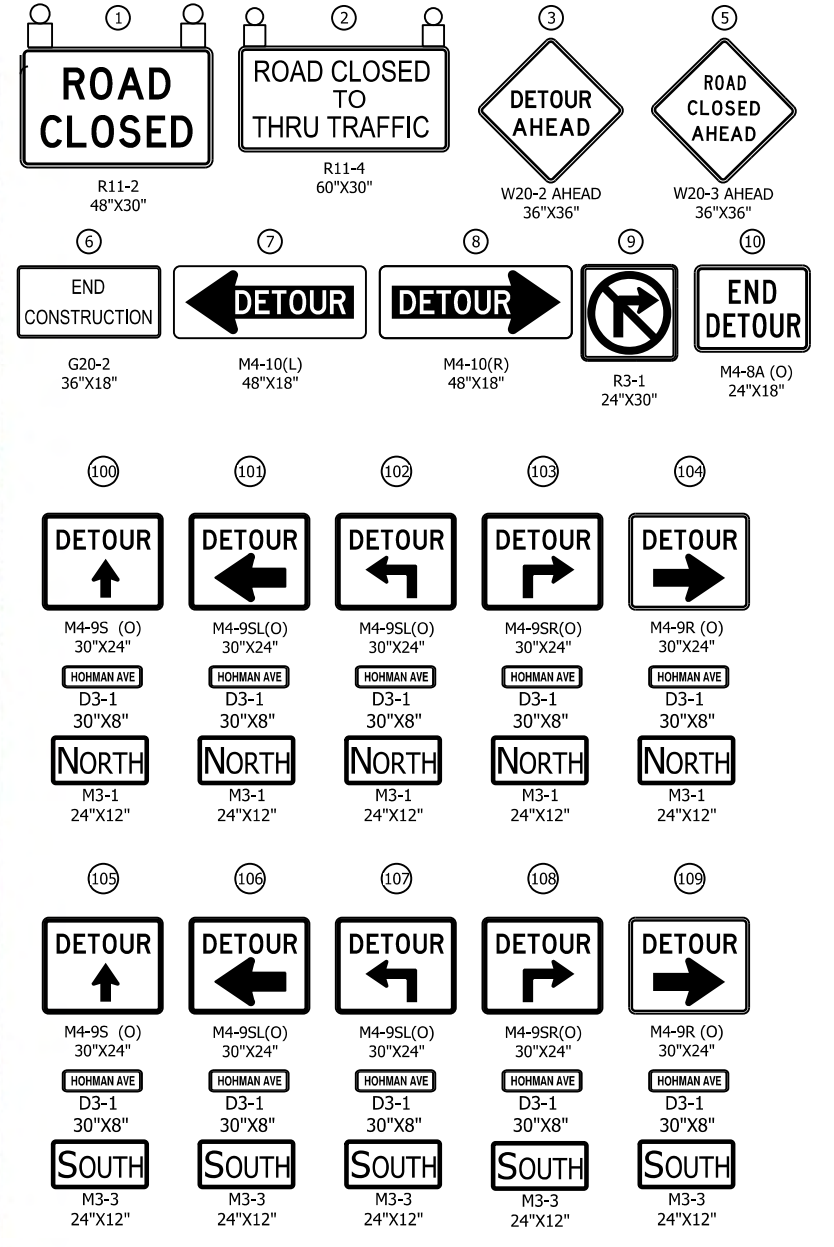
**For additional project information please visit:  
[www.nictdwestlake.com](http://www.nictdwestlake.com) or [www.fhp-rb.com](http://www.fhp-rb.com)**

- Pump Station Construction
  - Excavation begin on 8/23/23. Trucking operations through Town of Munster roadways. Minimal impact to vehicular traffic.

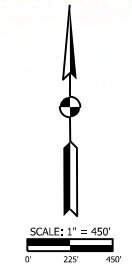
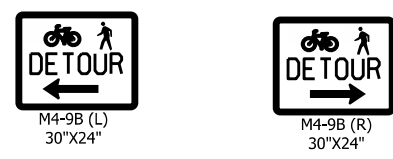
**Dyer**

- Munster-Dyer West Parking Lot
  - Continue excavation, grading and drainage at West lot and pond.
    - No impact to vehicular traffic.

**For additional project information please visit:  
[www.nictdwestlake.com](http://www.nictdwestlake.com) or [www.fhp-rb.com](http://www.fhp-rb.com)**



- NOTES**
- SIGN DESIGNATIONS ARE PER IMUTCD.
  - SIGN LOCATIONS ARE APPROXIMATE. SEE BU G-C01 DWG. NO. G-CI01-GEDT-806 FOR SIGN PLACEMENT.
  - SEE BU G-C01 DWG. NO. G-CI01-GEDT-824A FOR SIGN POST DETAILS.
  - SEE BU G-C01 DWG. NO. G-CI01-GEDT-807 AND G-CI01-GEDT-808 FOR TYPE III BARRICADE SIGN PLACEMENT.
  - DETOUR FOR MICHIGAN ST TO REMAIN THROUGHOUT CONSTRUCTION.
  - NB AND SB HOHMAN AVE DETOUR ARE TO BE USED DURING NIGHTTIME OVERHEAD BRIDGE OPERATIONS. HOHMAN AVE TO REMAIN OPEN DURING THE DAY USING STAGED MOT.
- LEGEND**
- TYPE III BARRICADE
  - - - SIGN
  - - - DETOUR ROUTE
  - DIRECTION OF TRAFFIC
  - ▨ WORK SPACE
  - (O) ORANGE
  - TYPE B LIGHT



PLOT DATE: 7/24/2023 PLOT TIME: 10:55:01 PM  
FILE NAME: SHT-N-CI01-MTPL-11.dgn

**FHP** F.H. PASCHEN  
**R3** RAGNAR BENSON  
JOINT VENTURE

**Jacobs**

REVISIONS		
ISSUE	DATE	DESCRIPTION

**NICD**  
NORTHERN INDIANA COMMUTER  
TRANSPORTATION DISTRICT  
33 East Highway 12  
Chesterton, Indiana 46304

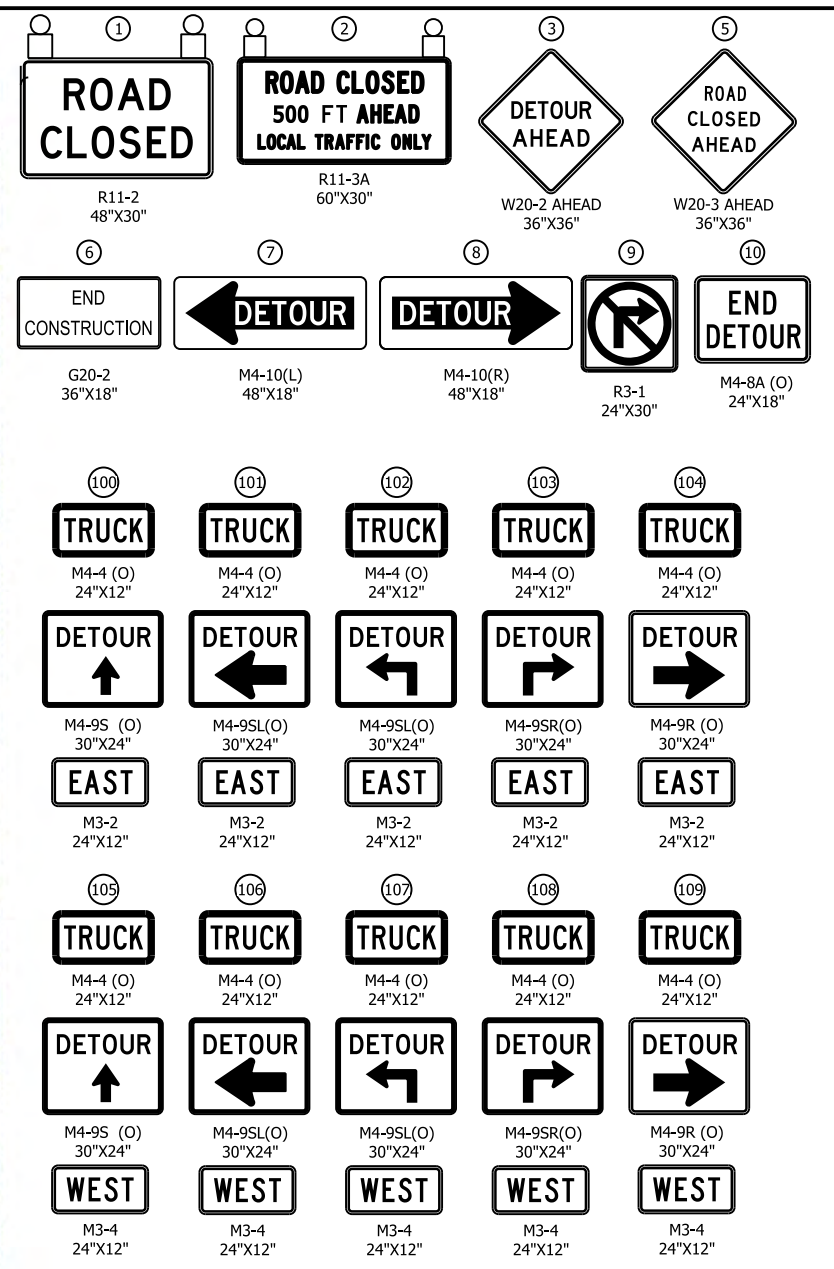
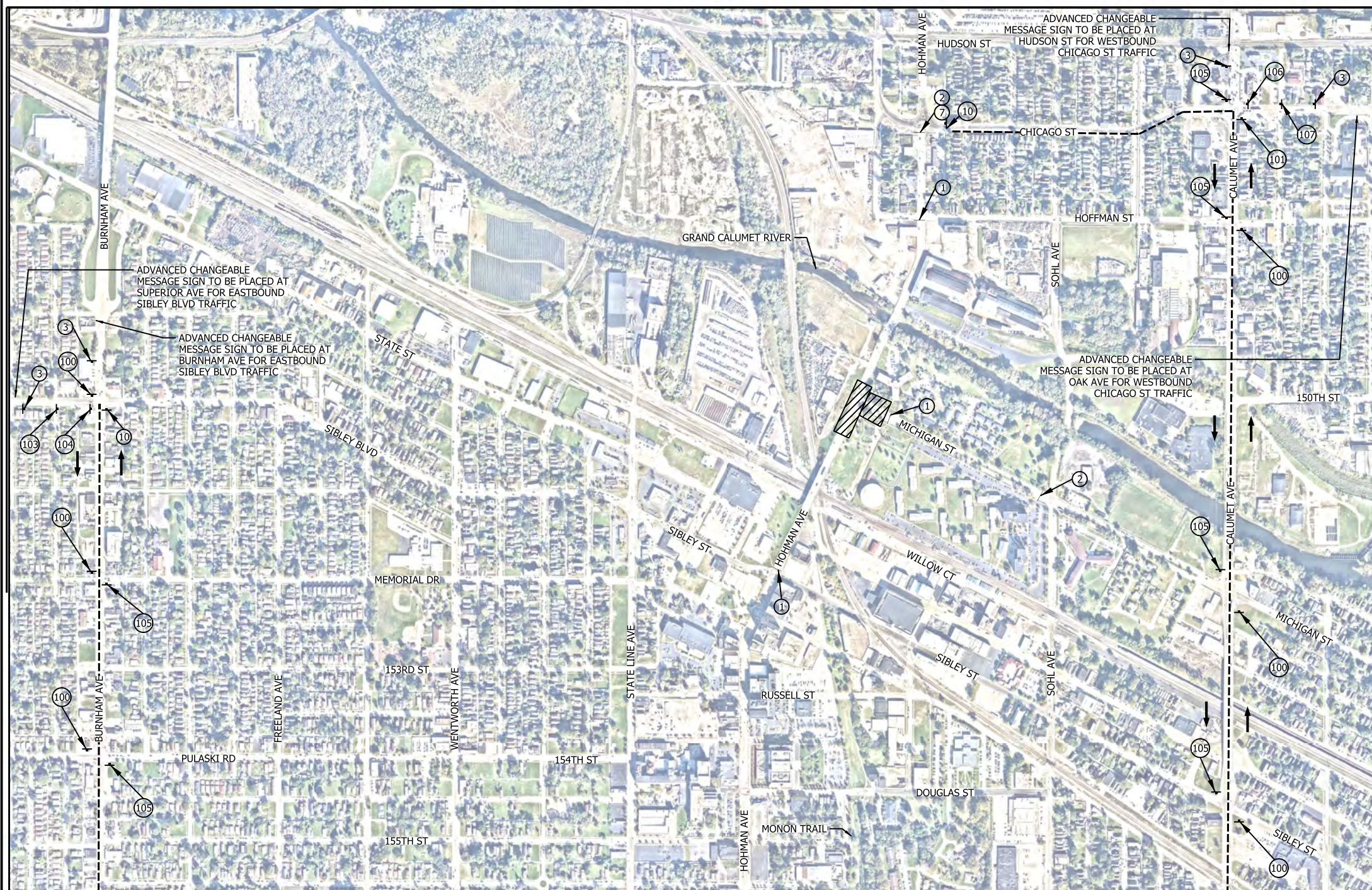
**WEST LAKE**  
CORRIDOR  
DYER TO HAMMOND, INDIANA

BU:	N-CI01
DESIGNED:	A. SIPKOVSKY
DRAWN:	S. KOZLOWSKI
CHECKED:	A. SIPKOVSKY
SCALE:	1"=450'
DATE:	10/20/2021

DWG NO. \_\_\_\_\_

**MAINTENANCE OF TRAFFIC  
DETOUR PLAN - MICHIGAN STREET  
AND HOHMAN AVENUE**

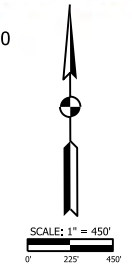
**FOR CONSTRUCTION** SHEET NO. **OF**



- NOTES**
- SIGN DESIGNATIONS ARE PER IMUTCD.
  - SIGN LOCATIONS ARE APPROXIMATE. SEE BU G-C01 DWG. NO. [G-CI01-GEDT-806](#) FOR SIGN PLACEMENT.
  - SEE BU G-C01 DWG. NO. [G-CI01-GEDT-824A](#) FOR SIGN POST DETAILS.
  - SEE BU G-C01 DWG. NO. [G-CI01-GEDT-807](#) AND [G-CI01-GEDT-808](#) FOR TYPE III BARRICADE SIGN PLACEMENT.
  - ADVANCED CHANGEABLE MESSAGE SIGNS TO READ "HOHMAN AVE CLOSED | TRUCKS FOLLOW DETOUR"
- LEGEND**
- TYPE III BARRICADE
  - SIGN
  - DETOUR ROUTE
  - DIRECTION OF TRAFFIC
  - ▨ WORK SPACE
  - (O) ORANGE
  - Ⓛ TYPE B LIGHT

MATCHLINE  
SEE [SHT-N-CI01-MTPL-10](#)

MATCHLINE  
SEE [SHT-N-CI01-MTPL-10](#)



PLOT DATE: 11/3/2021 PLOT TIME: 12:59:25 PM  
FILE NAME: SHT-N-CI01-MTPL-09.dgn

**FHP** F.H. PASCHEN  
**R3** RAGNAR BENSON  
JOINT VENTURE

**Jacobs**

REVISIONS		
ISSUE	DATE	DESCRIPTION

**NICD**  
NORTHERN INDIANA COMMUTER  
TRANSPORTATION DISTRICT  
33 East Highway 12  
Chesterton, Indiana 46304

**WEST LAKE**  
CORRIDOR  
DYER TO HAMMOND, INDIANA

PROF. T. DAVID HEALY  
REGISTERED  
PE 12100025  
STATE OF INDIANA  
PROFESSIONAL ENGINEER  
DATE: 11/03/21

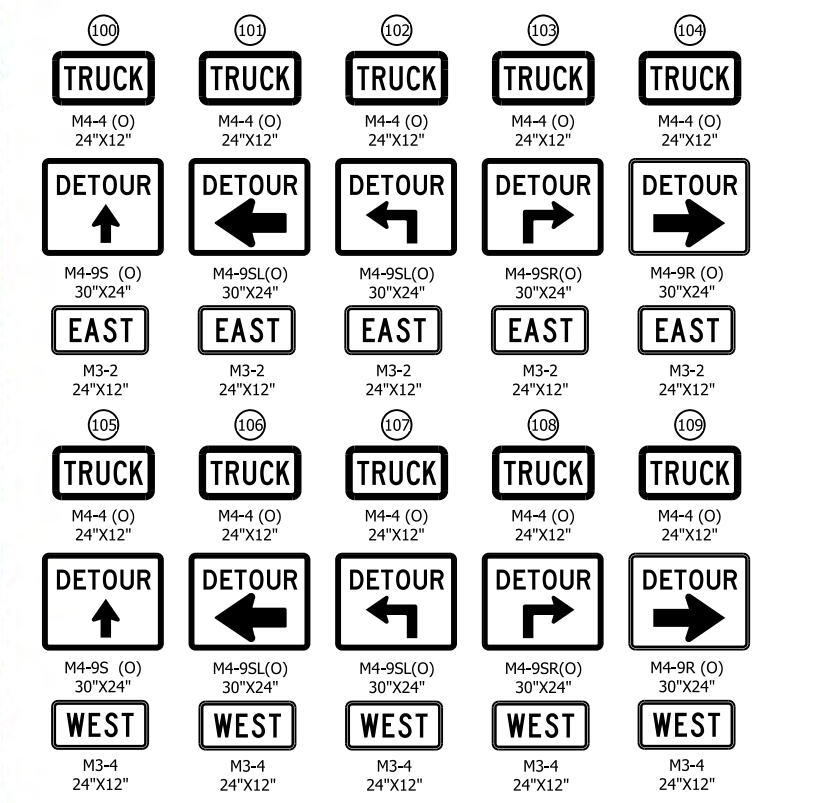
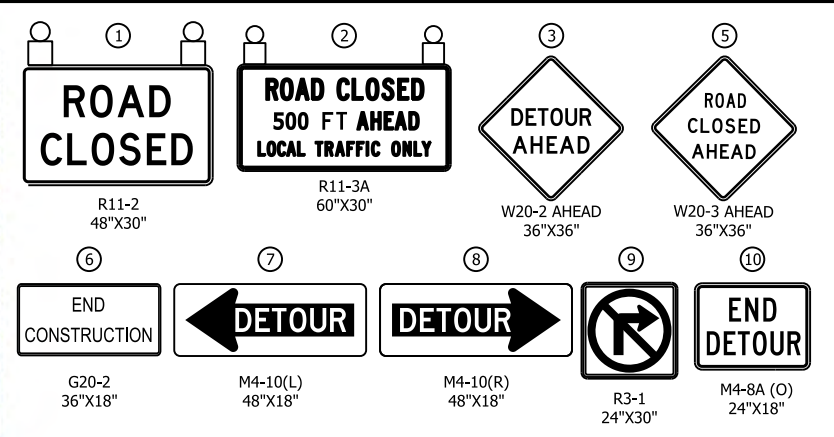
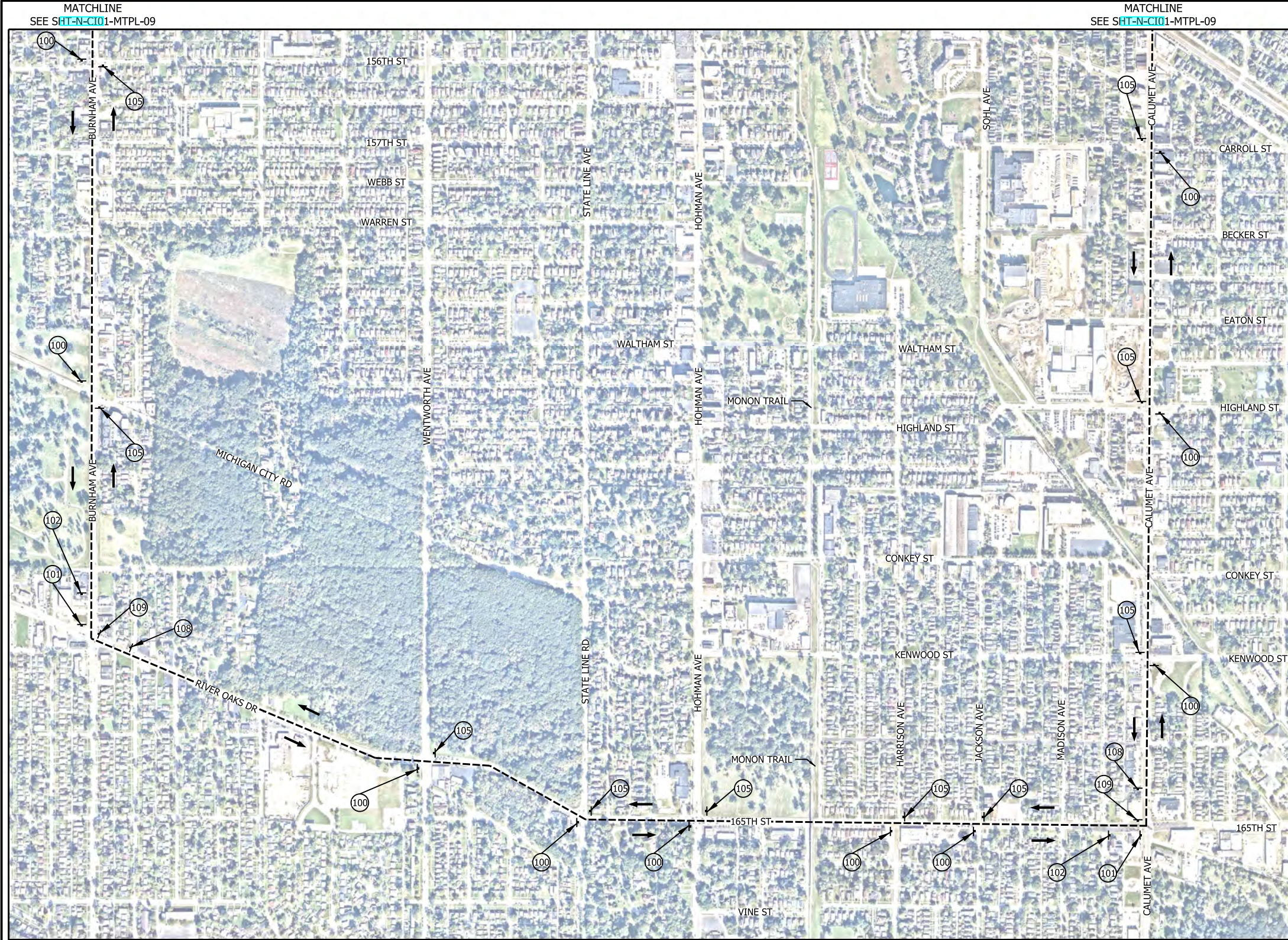
BU:	N-CI01
DESIGNED:	A. SIPKOVSKY
DRAWN:	S. KOZLOWSKI
CHECKED:	A. SIPKOVSKY
SCALE:	1"=450'
DATE:	10/20/2021

**FINAL RFC PLANS** DWG NO. N-CI01-MTPL-09

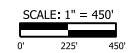
**MAINTENANCE OF TRAFFIC  
DETOUR PLAN - TRUCK ROUTE  
HOHMAN AVENUE CLOSURE**

**FOR CONSTRUCTION** SHEET NO. 18 OF 78

PLOT DATE: 11/3/2021 PLOT TIME: 1:01:21 PM  
 FILE NAME: SHT-N-CI01-MTPL-10.dgn



- NOTES**
- SIGN DESIGNATIONS ARE PER IMUTCD.
  - SIGN LOCATIONS ARE APPROXIMATE. SEE BU G-C01 DWG. NO. G-CI01-GEDT-806 FOR SIGN PLACEMENT.
  - SEE BU G-C01 DWG. NO. G-CI01-GEDT-824A FOR SIGN POST DETAILS.
  - SEE BU G-C01 DWG. NO. G-CI01-GEDT-807 AND G-CI01-GEDT-808 FOR TYPE III BARRICADE SIGN PLACEMENT.
  - ADVANCED CHANGEABLE MESSAGE SIGNS TO READ "HOHMAN AVE CLOSED | TRUCKS FOLLOW DETOUR"
- LEGEND**
- TYPE III BARRICADE
  - ▲ SIGN
  - DETOUR ROUTE
  - DIRECTION OF TRAFFIC
  - ▨ WORK SPACE
  - (O) ORANGE
  - TYPE B LIGHT



**FHP** F.H. PASCHEN RAGNAR BENSON JOINT VENTURE

**Jacobs**

REVISIONS		
ISSUE	DATE	DESCRIPTION

**NICD**  
 NORTHERN INDIANA COMMUTER TRANSPORTATION DISTRICT  
 33 East Highway 12  
 Chesterton, Indiana 46304

**WEST LAKE CORRIDOR**  
 DYER TO HAMMOND, INDIANA

PROF. T. DAVID HEALEY  
 REGISTERED PROFESSIONAL ENGINEER  
 STATE OF INDIANA  
 PE 124003  
 DATE: 11/03/21

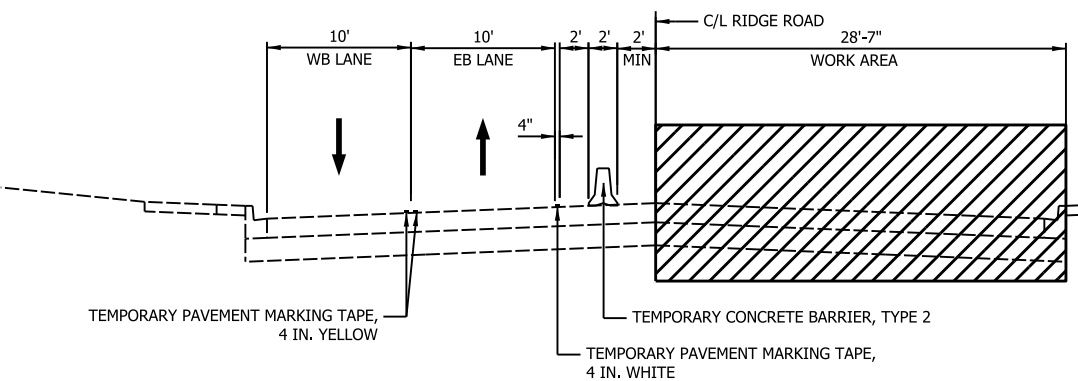
BU:	N-CI01
DESIGNED:	A. SIPKOVSKY
DRAWN:	S. KOZLOWSKI
CHECKED:	A. SIPKOVSKY
SCALE:	1"=450'
DATE:	10/20/2021

**FINAL RFC PLANS** DWG. NO. N-CI01-MTPL-10

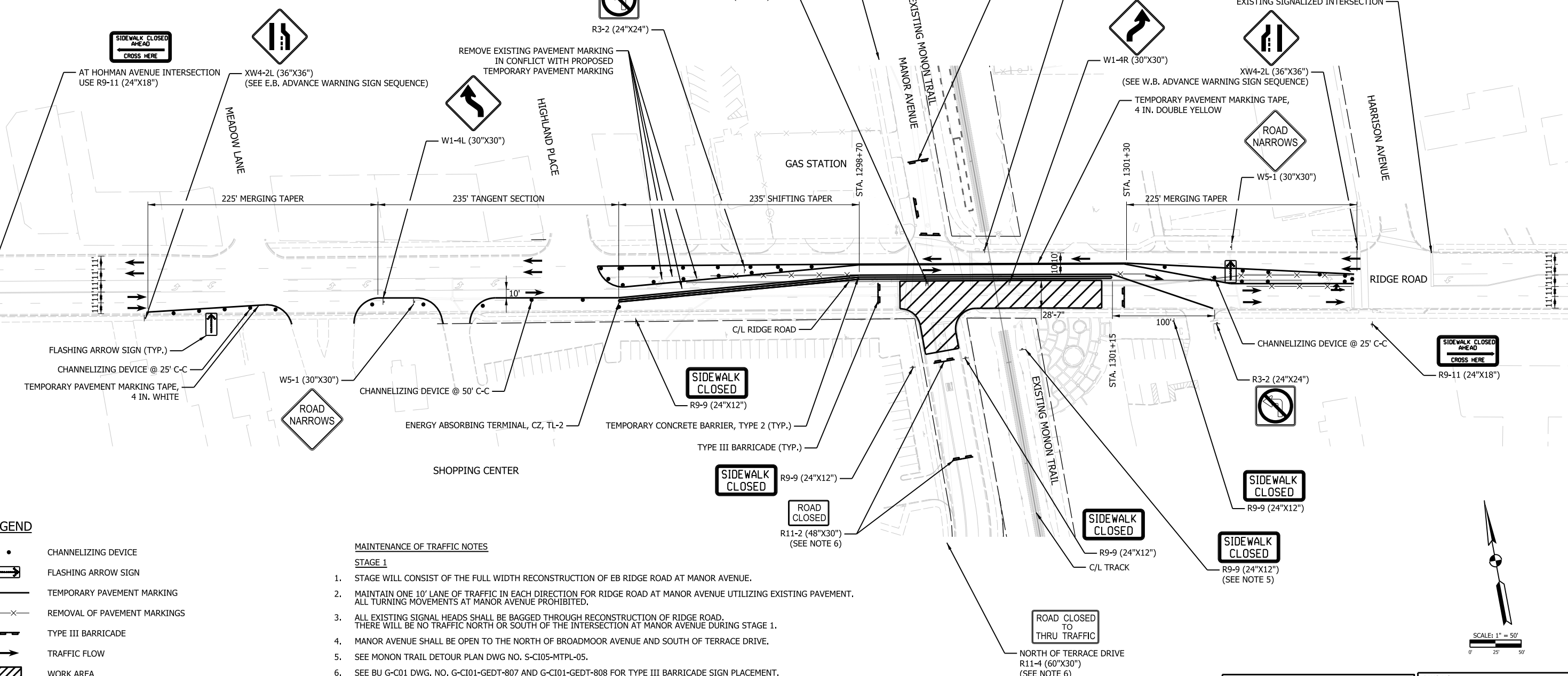
**MAINTENANCE OF TRAFFIC DETOUR PLAN - TRUCK ROUTE HOHMAN AVENUE CLOSURE**

**FOR CONSTRUCTION** SHEET NO. 19 OF 78

**SECOND  
STAGE 1  
IMPACT ALL EASTBOUND LANES  
8/11 thru 9/15**



**STAGE 1 TYPICAL SECTION**

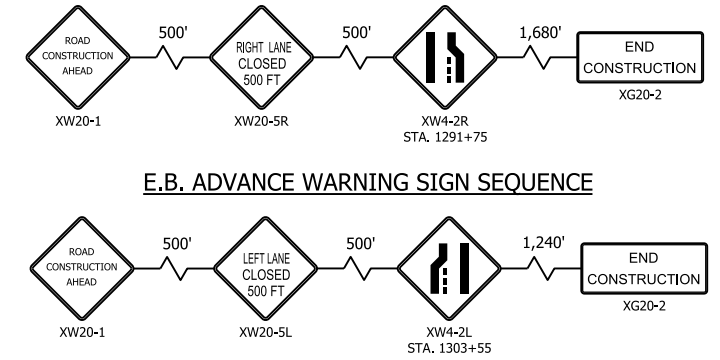


**LEGEND**

- CHANNELIZING DEVICE
- FLASHING ARROW SIGN
- TEMPORARY PAVEMENT MARKING
- X— REMOVAL OF PAVEMENT MARKINGS
- TYPE III BARRICADE
- TRAFFIC FLOW
- ▨ WORK AREA

**MAINTENANCE OF TRAFFIC NOTES**

- STAGE 1**
1. STAGE WILL CONSIST OF THE FULL WIDTH RECONSTRUCTION OF EB RIDGE ROAD AT MANOR AVENUE.
  2. MAINTAIN ONE 10' LANE OF TRAFFIC IN EACH DIRECTION FOR RIDGE ROAD AT MANOR AVENUE UTILIZING EXISTING PAVEMENT. ALL TURNING MOVEMENTS AT MANOR AVENUE PROHIBITED.
  3. ALL EXISTING SIGNAL HEADS SHALL BE BAGGED THROUGH RECONSTRUCTION OF RIDGE ROAD. THERE WILL BE NO TRAFFIC NORTH OR SOUTH OF THE INTERSECTION AT MANOR AVENUE DURING STAGE 1.
  4. MANOR AVENUE SHALL BE OPEN TO THE NORTH OF BROADMOOR AVENUE AND SOUTH OF TERRACE DRIVE.
  5. SEE MONON TRAIL DETOUR PLAN DWG NO. S-CI05-MTPL-05.
  6. SEE BU G-C01 DWG. NO. G-CI01-GEDT-807 AND G-CI01-GEDT-808 FOR TYPE III BARRICADE SIGN PLACEMENT.



**E.B. ADVANCE WARNING SIGN SEQUENCE**

**W.B. ADVANCE WARNING SIGN SEQUENCE**

PLOT DATE: 11/29/2021 PLOT TIME: 1:39:23 PM  
FILE NAME: SHT-S-CI05-MTBA-01.dgn

**F.H. PASCHEN  
RAGNAR BENSON  
JOINT VENTURE**

**Jacobs**

REVISIONS		
ISSUE	DATE	DESCRIPTION

**NICD**  
NORTHERN INDIANA COMMUTER  
TRANSPORTATION DISTRICT  
33 East Highway 12  
Chesterton, Indiana 46304

**WEST LAKE  
CORRIDOR**  
DYER TO HAMMOND, INDIANA

SCOTT T. DAVID HEALY  
REGISTERED PROFESSIONAL ENGINEER  
INDIANA  
PE1210005  
DATE: 11/30/21

BU:	S-CI05
DESIGNED:	A. SIPKOVSKY
DRAWN:	K. GOMEZ
CHECKED:	A. SIPKOVSKY
SCALE:	1"=50'
DATE:	12/1/2021

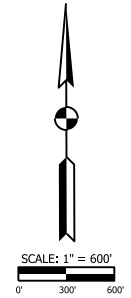
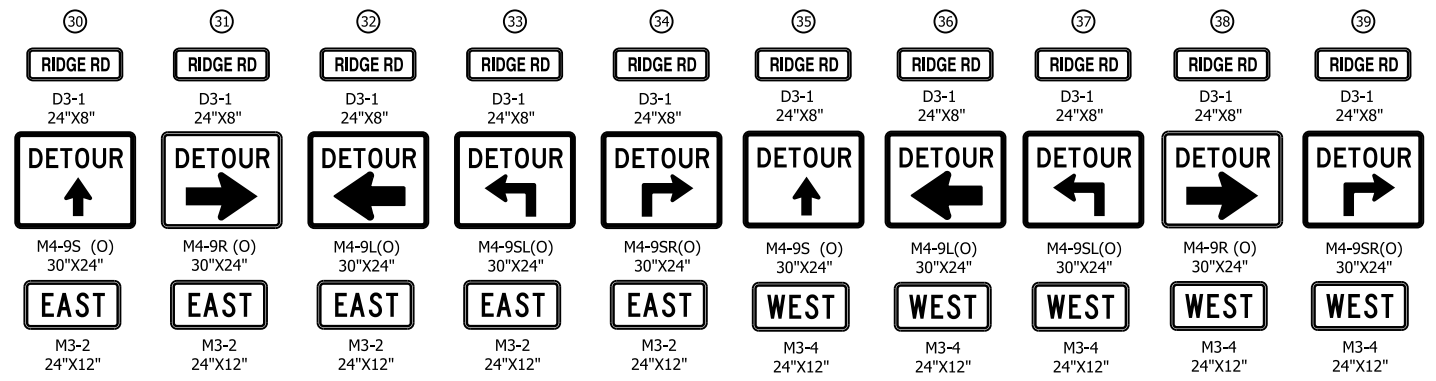
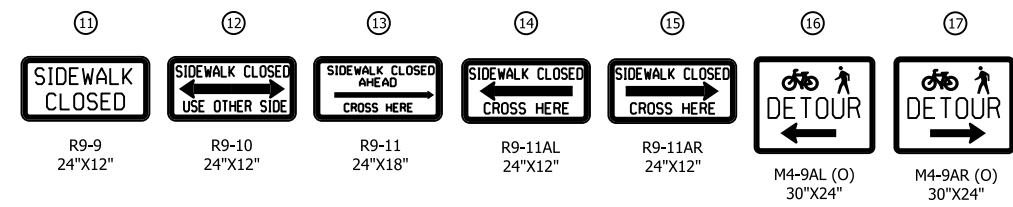
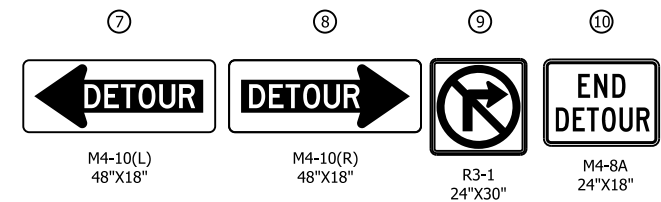
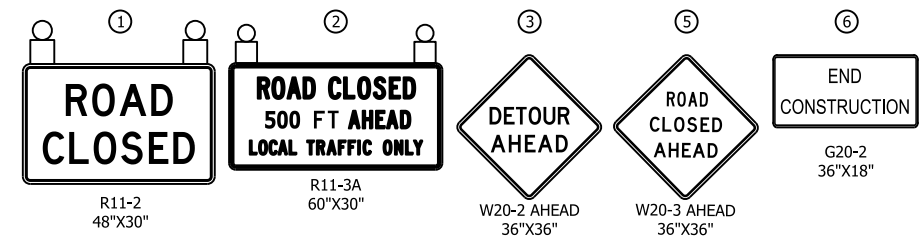
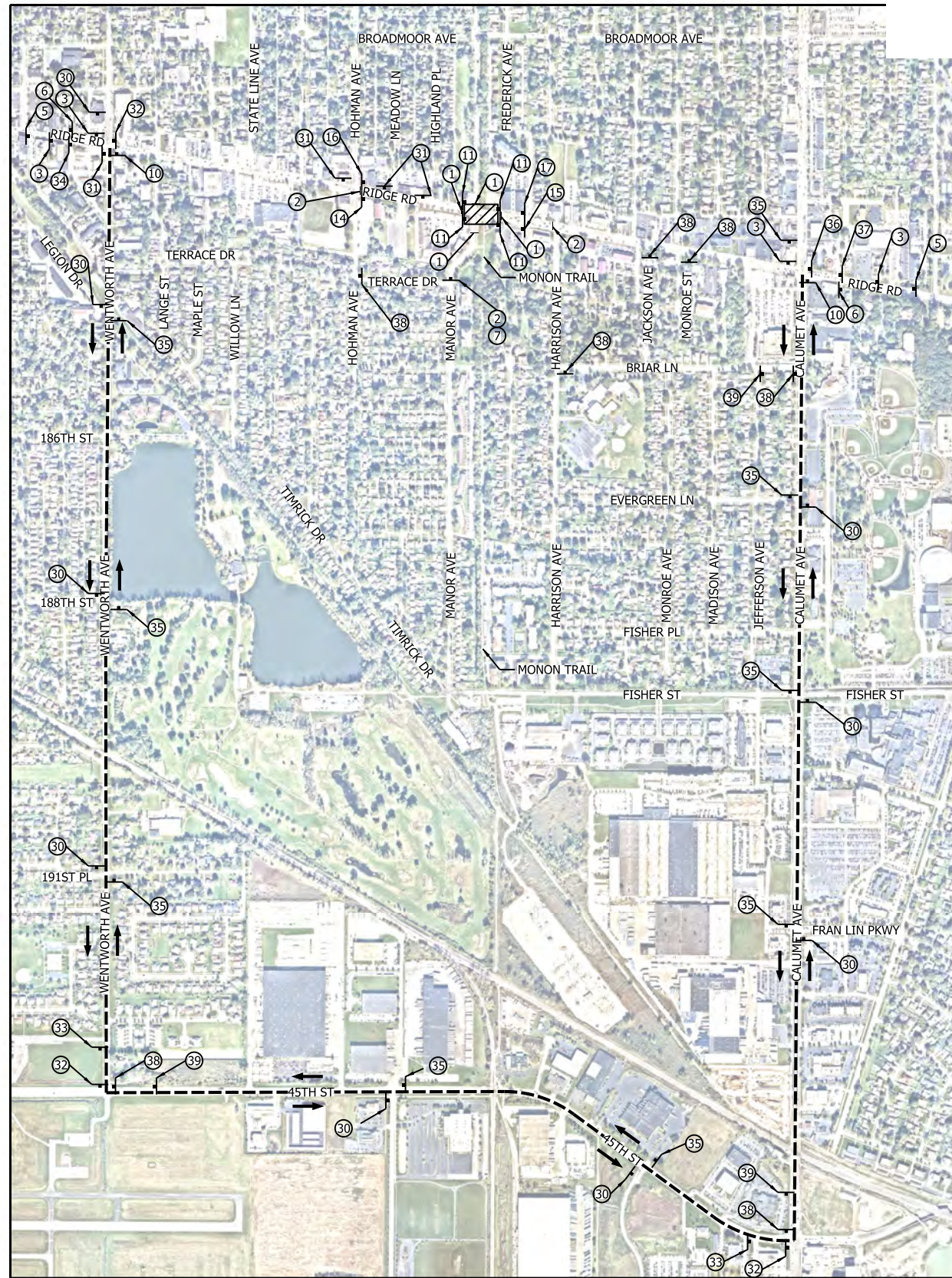
**FINAL RFC PLANS** DWG. NO. **S-CI05-MTBA-01**

**MAINTENANCE OF TRAFFIC  
RIDGE ROAD - STAGE 1**

**FOR CONSTRUCTION**

SHEET NO. **10 OF 87**

**THIRD  
STAGE 3  
IMPACT ALL LANES  
9/15 thru 9/22**



**NOTES**

- SIGN DESIGNATIONS ARE PER IMUTCD.
- SIGN LOCATIONS ARE APPROXIMATE. SEE BU G-C01 DWG. NO. G-CI01-GEDT-806 FOR SIGN PLACEMENT.
- SEE BU G-C01 DWG. NO. G-CI01-GEDT-824A FOR SIGN POST DETAILS.
- SEE BU G-C01 DWG. NO. G-CI01-GEDT-807 AND G-CI01-GEDT-808 FOR TYPE III BARRICADE SIGN PLACEMENT.
- CONTRACTOR TO MAINTAIN LOCAL DRIVEWAY ACCESS WITHIN ROAD CLOSURE LIMITS OR PROVIDE ALTERNATIVE ARRANGEMENTS.
- BROADMOOR AVENUE AND FISHER STREET TO REMAIN OPEN DURING CLOSURE OF RIDGE ROAD.
- THIS DETOUR SHALL BE USED FOR TRACK CONSTRUCTION ONLY.

**LEGEND**

- TYPE III BARRICADE
- + SIGN
- - - DETOUR ROUTE
- DIRECTION OF TRAFFIC
- ▨ WORK SPACE
- (O) ORANGE
- TYPE B LIGHT

PLOT DATE: 11/29/2021 PLOT TIME: 1:42:57 PM  
FILE NAME: SHT-S-CI05-MTPL-02.dgn

**FHP** F.H. PASCHEN  
**R3** RAGNAR BENSON  
JOINT VENTURE

**Jacobs**

REVISIONS		
ISSUE	DATE	DESCRIPTION

**NICD**  
NORTHERN INDIANA COMMUTER  
TRANSPORTATION DISTRICT  
33 East Highway 12  
Chesterton, Indiana 46304

**WEST LAKE**  
CORRIDOR  
DYER TO HAMMOND, INDIANA

REGISTERED PROFESSIONAL ENGINEER  
DAVID HEATLEY  
PE12100055  
INDIANA  
DATE: 11/30/21

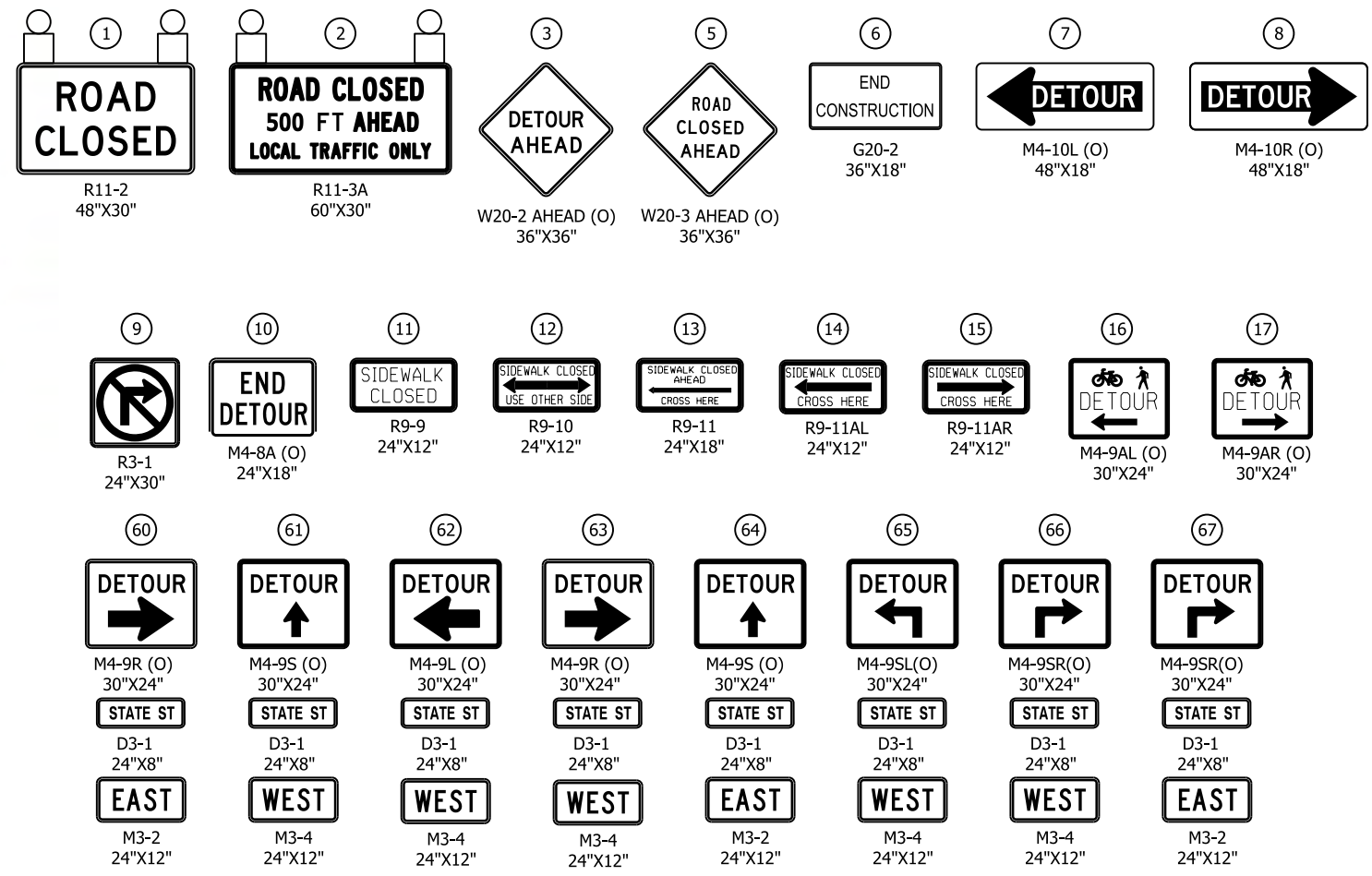
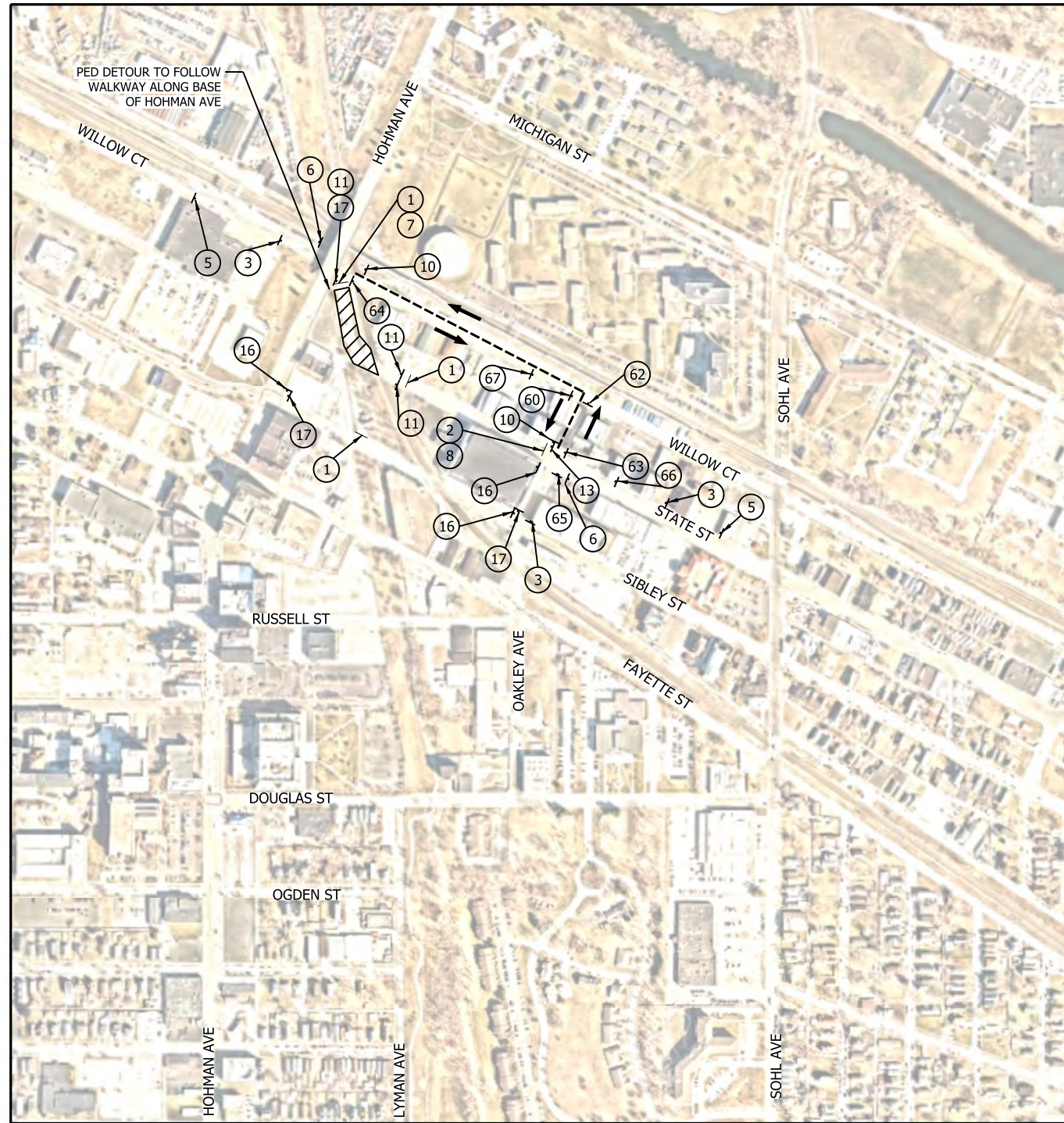
BU:	S-CI05
DESIGNED:	A. SIPKOVSKY
DRAWN:	S. KOZLOWSKI
CHECKED:	A. SIPKOVSKY
SCALE:	1"=600'
DATE:	12/1/2021

**FINAL RFC PLANS** DWG. NO. S-CI05-MTPL-02

**MAINTENANCE OF TRAFFIC  
DETOUR PLAN - RIDGE ROAD**

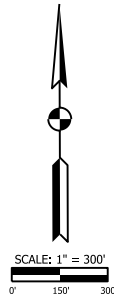
**FOR CONSTRUCTION** SHEET NO. 13 OF 87





**NOTES**

- SIGN DESIGNATIONS ARE PER IMUTCD.
- SIGN LOCATIONS ARE APPROXIMATE. SEE BU G-C01 DWG. NO. G-CI01-GEDT-828 FOR SIGN PLACEMENT.
- SEE BU G-C01 DWG. NO. G-CI01-GEDT-820, G-CI01-GEDT-821 AND G-CI01-GEDT-822 FOR SIGN POST DETAILS.
- SEE BU G-C01 DWG. NO. G-CI01-GEDT-807 AND G-CI01-GEDT-808 FOR TYPE III BARRICADE APPLICATION STANDARDS.
- THE CONTRACTOR SHALL MAINTAIN FREE PASSAGE OF PEDESTRIANS ON ONE SIDE OF STATE STREET WHEN PRACTICABLE.
- TRAFFIC SIGNALS AT STATE ST AND WILLOW CT TO BE BAGGED DURING CLOSURE OF STATE ST.



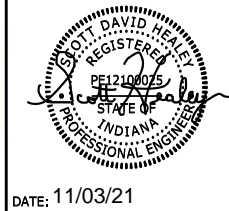
**LEGEND**

- TYPE III BARRICADE
- SIGN
- - - - DETOUR ROUTE
- DIRECTION OF TRAFFIC
- ▨ WORK SPACE
- (O) ORANGE
- TYPE B LIGHT

PLOT DATE: 11/3/2021 PLOT TIME: 1:01:08 PM  
FILE NAME: SHT-N-CI01-MTPL-05.dgn



REVISIONS		
ISSUE	DATE	DESCRIPTION



BU:	N-CI01
DESIGNED:	A. SIPKOVSKY
DRAWN:	S. KOZLOWSKI
CHECKED:	A. SIPKOVSKY
SCALE:	1"=300'
DATE:	10/20/2021

**FINAL RFC PLANS** DWG NO. N-CI01-MTPL-05

**MAINTENANCE OF TRAFFIC  
DETOUR PLAN - STATE STREET**

**FOR CONSTRUCTION** SHEET NO. **15 OF 78**