



NICTD West Lake Corridor Project Construction Update

Week of 10.29.2024 & 11.5.2024

Hammond

HAMMOND GATEWAY STATION OPEN

- **Closures**
 - Sheffield Avenue
 - Closure begins November 4th - 11th
 - See attached detour and follow posted detour.
- **Rail Construction**
 - Track realignment near existing Hammond Station.
 - No impact to vehicular traffic.
- **Electrical Construction**
 - Installing Overhead Catenary System (OCS) in Hammond.
 - No impact to vehicular traffic.
 - Installing power service at multiple locations in Hammond.
 - No impact to vehicular traffic.
- **Station Construction**
 - Contractor finishing future Hammond Gateway Station Building.
 - Contractor finishing elevator at Hammond Gateway Station.
 - Contractor finishing light fixtures in South Hammond lot.
- **Road Construction**
 - Sheffield Avenue at SSL Crossing
 - Closing Sheffield Avenue to remove the existing track panel and finish concrete median.

Munster

- **Closures**
 - Ridge Road
 - Closure begins at 8 PM on October 30th to 4 AM on October 31st
 - See attached detour and follow posted detour.
- **Fence Installation**
 - Installing fence from Fisher Street to Little Calumet River.
 - No impact to vehicular traffic.

For additional project information please visit:
www.nictdwestlake.com or www.fhp-rb.com

- **Rail Construction**
 - Rail Contractor constructing track from Fisher Street to Main Street within Right of Way.
 - No impact to vehicular traffic.
- **Electrical Construction**
 - Installing Overhead Catenary System (OCS) in Munster.
 - No impact to vehicular traffic.
 - Installing power service at multiple locations in Munster.
 - No impact to vehicular traffic.
- **Road Construction**
 - Contractor installing roadway signage and pavement markings at various intersections in the Town of Munster
 - Traffic will be maintained with a Roadway Flagger or partial lane closures. Minimal impact to vehicular traffic.
- **Structure Work for Bridges, Elevated Structures, and Retaining Walls**
 - Cable handrail is being installed.
 - No impact to vehicular traffic.
- **Station Construction**
 - Munster-Dyer East Platform Access
 - Setting of Precast foundations for platform.
 - Trucking operations on Allison Road, minimal impacts to vehicular traffic.
 - Munster-Dyer West Access
 - Pouring of foundation walls ongoing
 - Trucking operations on Allison Road, minimal impacts to vehicular traffic.
- **Landscaping**
 - Trees being planted in various locations in late Fall throughout the Town of Musnter.
 - No impact to vehicular traffic.

**For additional project information please visit:
www.nictdwestlake.com or www.fhp-rb.com**

NOT DATE: 2/27/2022 PLOT TIME: 3:03:37 PM
 FILE NAME: S:\INDIANA\MTPL\01199

FHP F.H. PASCHEN
 RAGNAR BENSON
 JOINT VENTURE

Jacobs

REVISIONS		
ISSUE	DATE	DESCRIPTION

NICCO
 NORTHERN INDIANA COMMUTER
 TRANSPORTATION DISTRICT
 33 East Highway 12
 Cheserton, Indiana 46304

WEST LAKE
 ADRIAN DR
 DYER TO HAMMOND, INDIANA



BU: N-CBH
 DESIGNED: A. SIDKOVSKY
 DRAWN: S. KUMAR
 CHECKED: A. SIDKOVSKY
 SCALE: 1"=300'
 DATE: 12/13/2021

FINAL RFC PLANS DWG NO. N-CI04-MTPL-01

MAINTENANCE OF TRAFFIC
 DETOUR PLAN - SHEFFIELD AVENUE

FOR CONSTRUCTION SHEET NO. 8 OF 77



1 ROAD CLOSED R11-2 48"x30"	2 ROAD CLOSED 1 MILE AHEAD LOCAL TRAFFIC ONLY R11-3A 60"x30"	3 ROAD CLOSED TO THRU TRAFFIC R11-4 60"x30"	4 DETOUR AHEAD W20-2 AHEAD (O) 36"x36"	5 ROAD CLOSED AHEAD W20-3 AHEAD (O) 36"x36"
6 END CONSTRUCTION G20-2 36"x18"	7 DETOUR M4-10L (O) 48"x18"	8 DETOUR M4-10R (O) 48"x18"	9 NO RIGHT TURN R3-1 24"x30"	10 NO LEFT TURN R3-2 24"x30"
11 END DETOUR M4-8A 24"x18"	12 SIDEWALK CLOSED R9-9 24"x12"	20 DETOUR M4-9S(O) 30"x24"	21 DETOUR M4-9L(O) 30"x24"	22 DETOUR M4-9R(O) 30"x24"
23 DETOUR M4-9SL(O) 30"x24"	24 DETOUR M4-9SR(O) 30"x24"	25 DETOUR M4-9S(O) 30"x24"	26 DETOUR M4-9L(O) 30"x24"	
27 DETOUR M4-9R(O) 30"x24"	28 DETOUR M4-9SL(O) 30"x24"	29 DETOUR M4-9SR(O) 30"x24"		



NOTES

- SIGN DESIGNATIONS AS ARE PER IMUTCD.
- SIGN LOCATIONS ARE APPROXIMATE. SEE BU G-C01 DWG NO. G-CI01-GEDT-818 FOR SIGN PLACEMENT.
- SEE BU G-C01 DWG NO. G-CI01-GEDT-820 FOR SIGN POST DETAILS.
- CONTRACTOR SHALL NOT CLOSE HOHMAN AND SHEFFIELD AT THE SAME TIME UNLESS APPROVED BY THE HAMMOND CITY ENGINEER OR DESIGNEE.

LEGEND

- TYPE III BARRICADE
- - - SIGN
- - - - DETOUR ROUTE
- DIRECTION OF TRAFFIC
- ▨ WORK SPACE
- (O) ORANGE

PLOT DATE: 10/11/2021 PLOT TIME: 12:26:59 PM
 FILE NAME: SHT-N-CI01-MTPL-09A.dwg



JACOBS

REVISIONS		
ISSUE	DATE	DESCRIPTION



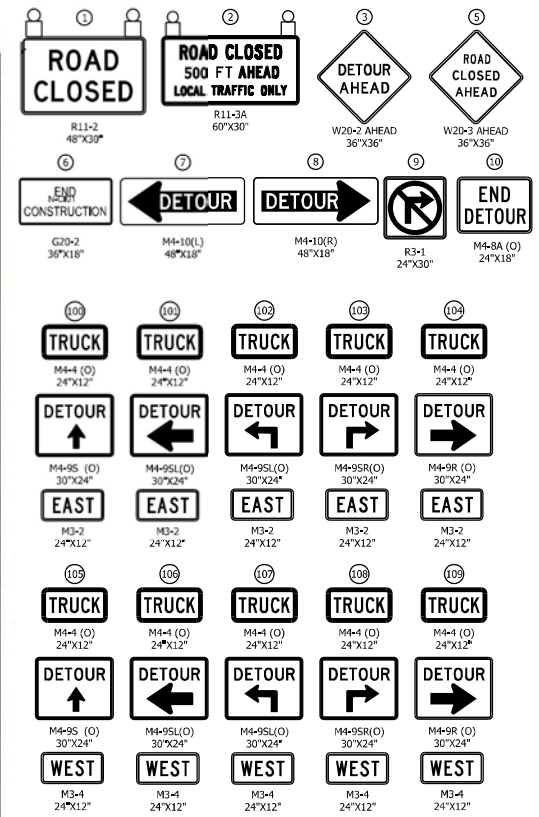
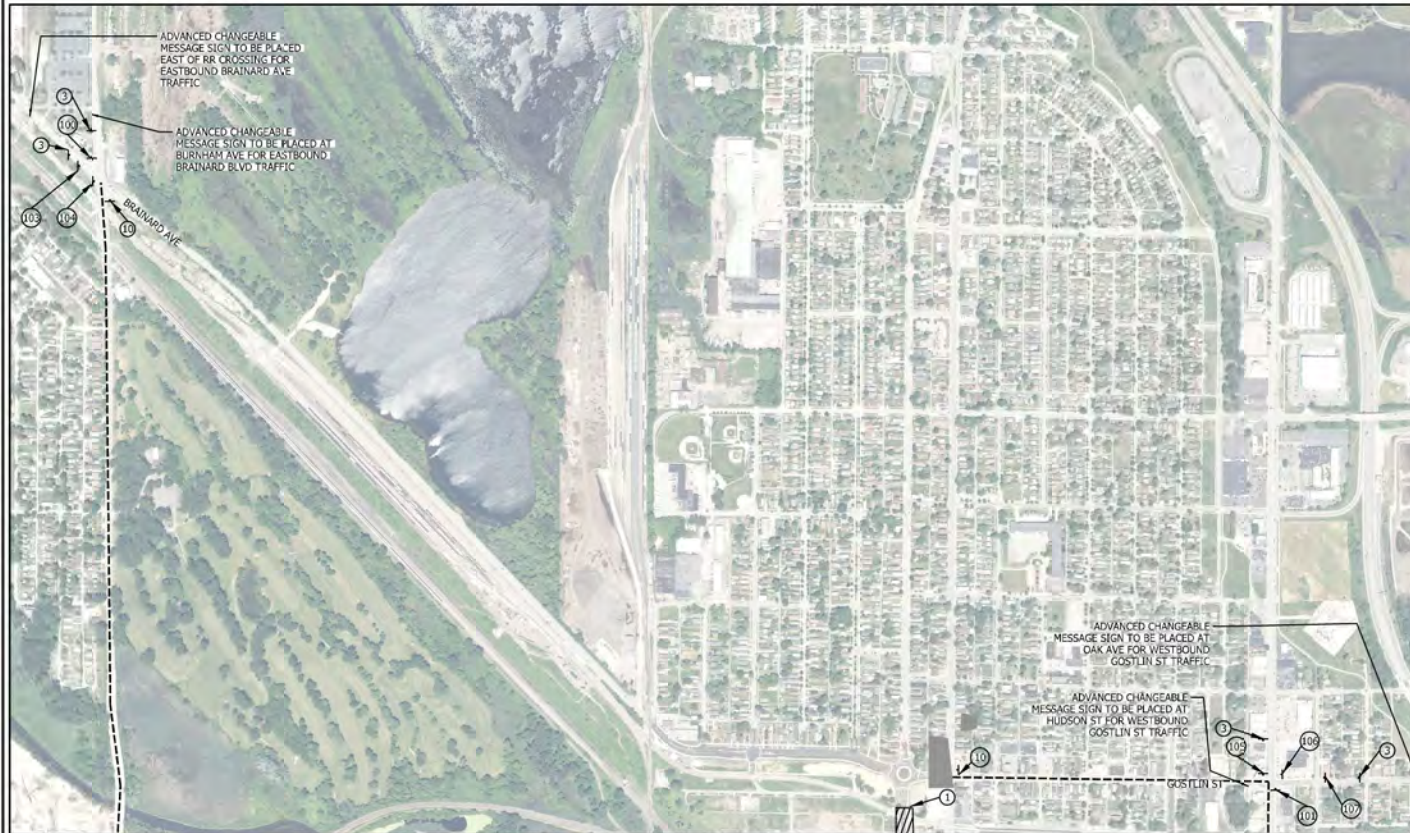
DESIGNED:	A. SIKPOVSKY
DRAWN:	S. KOZLOWSKI
ENGINEER:	A. SIKPOVSKY
SCALE:	1" = 150'
DATE:	10/20/2021

MAINTENANCE OF TRAFFIC
 DETOUR PLAN - TRUCK ROUTE
 SHEFFIELD AVENUE CLOSURE

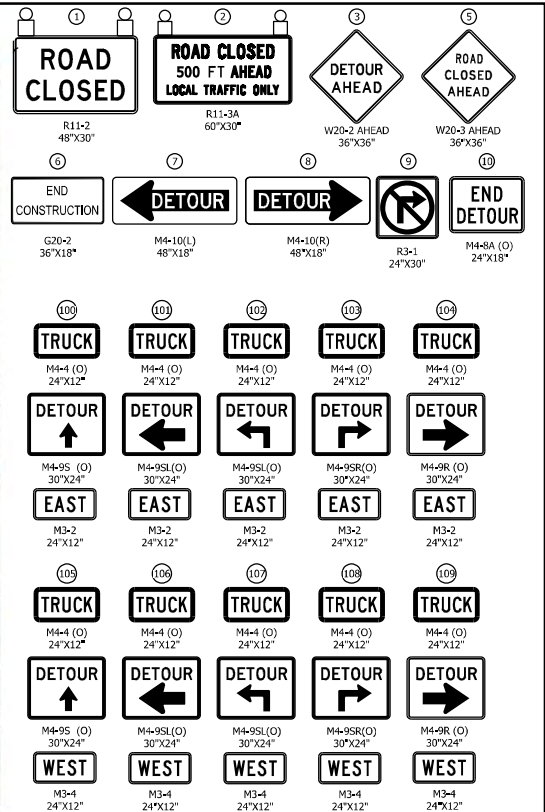
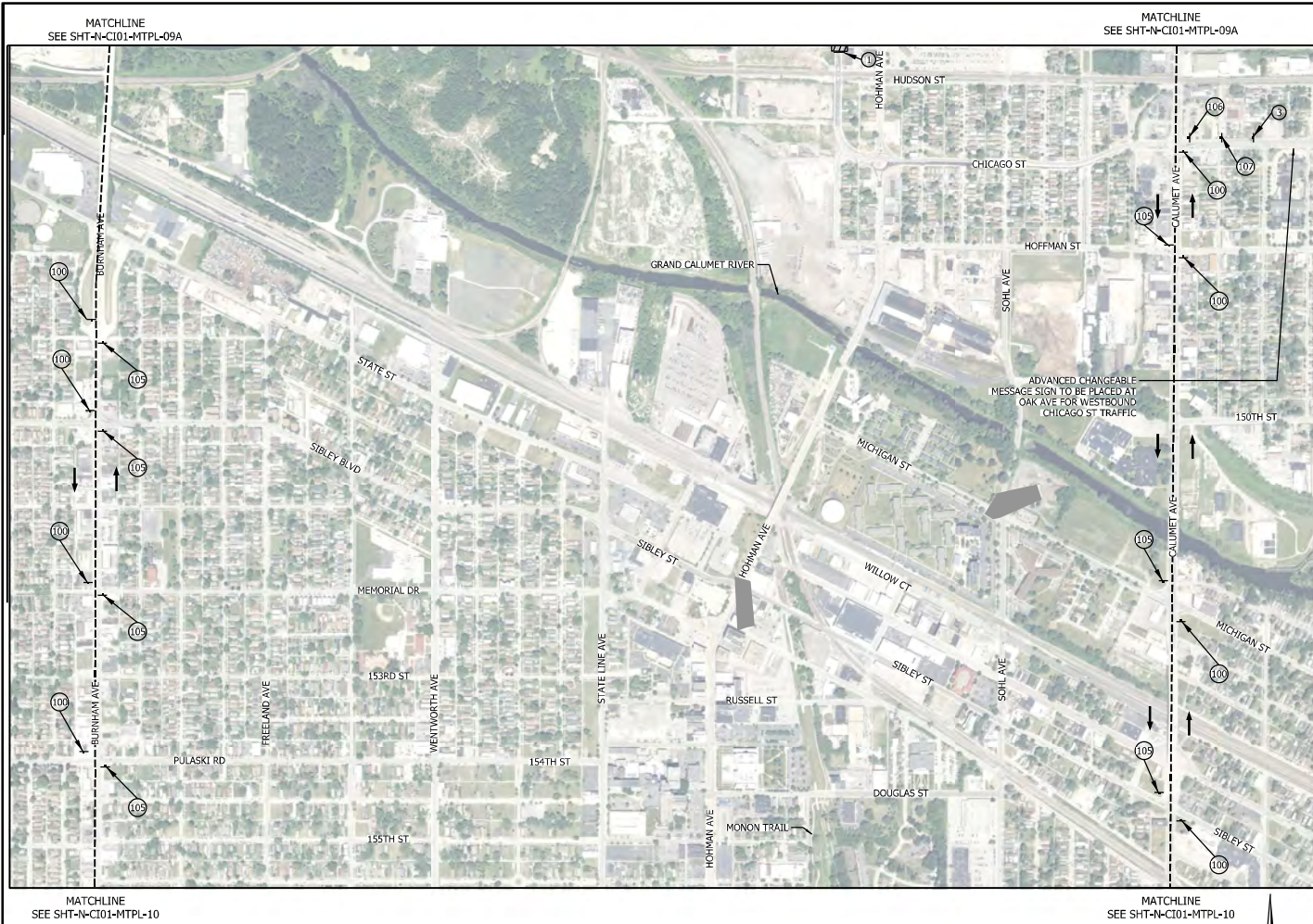
FOR CONSTRUCTION

DWG NO. N-CI01-MTPL-09A

SHEET NO. OF



- NOTES**
- SIGN DESIGNATIONS ARE PER IMUTCD.
 - SIGN LOCATIONS ARE APPROXIMATE. SEE BU G-C01 DWG. NO. G-C101-GEDT-806 FOR SIGN PLACEMENT.
 - SEE BU G-C01 DWG. NO. G-C101-GEDT-824A FOR SIGN POST DETAILS.
 - SEE BU G-C01 DWG. NO. G-C101-GEDT-807 AND G-C101-GEDT-808 FOR TYPE III BARRICADE SIGN PLACEMENT.
 - ADVANCED CHANGEABLE MESSAGE SIGNS TO READ "HOHMAN AVE CLOSED | TRUCKS FOLLOW DETOUR"
- LEGEND**
- TYPE III BARRICADE
 - ▲ SIGN
 - DETOUR ROUTE
 - DIRECTION OF TRAFFIC
 - ▨ WORK SPACE
 - (O) ORANGE
 - TYPE B LIGHT



- NOTES**
- SIGN DESIGNATIONS ARE PER IMUTCD.
 - SIGN LOCATIONS ARE APPROXIMATE. SEE BU G-C01 DWG, NO. G-C101-GEDT-806 FOR SIGN PLACEMENT.
 - SEE BU G-C01 DWG, NO. G-C101-GEDT-824A FOR SIGN POST DETAILS.
 - SEE BU G-C01 DWG, NO. G-C101-GEDT-807 AND G-C101-GEDT-808 FOR TYPE III BARRICADE SIGN PLACEMENT.
 - ADVANCED CHANGEABLE MESSAGE SIGNS TO READ "HOHMAN AVE CLOSED | TRUCKS FOLLOW DETOUR"
- LEGEND**
- TYPE III BARRICADE
 - - - SIGN
 - - - - - DETOUR ROUTE
 - DIRECTION OF TRAFFIC
 - ▨ WORK SPACE
 - (O) ORANGE
 - Ⓛ TYPE B LIGHT

10/11/2023 12:28:01 PM
 10112023 12:28:01 PM
 SHT-N-C101-MTPL-09

**F.H. PASCHEN
RAGNAR BENSON
JOINT VENTURE**

REVISIONS		
ISSUE	DATE	DESCRIPTION

**NORTHERN INDIANA COMMUTER
TRANSPORTATION DISTRICT**
 33 East Highway 12
 Chesterton, Indiana 46304

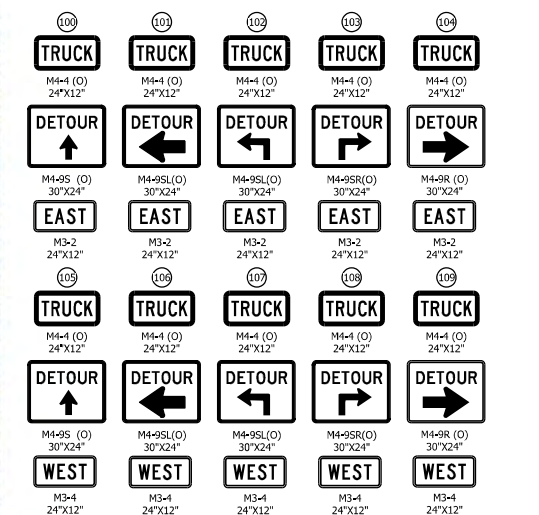
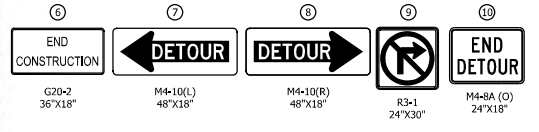
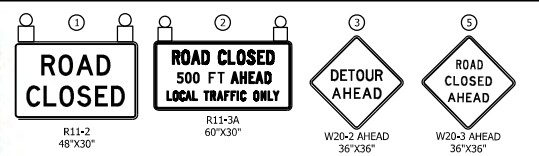
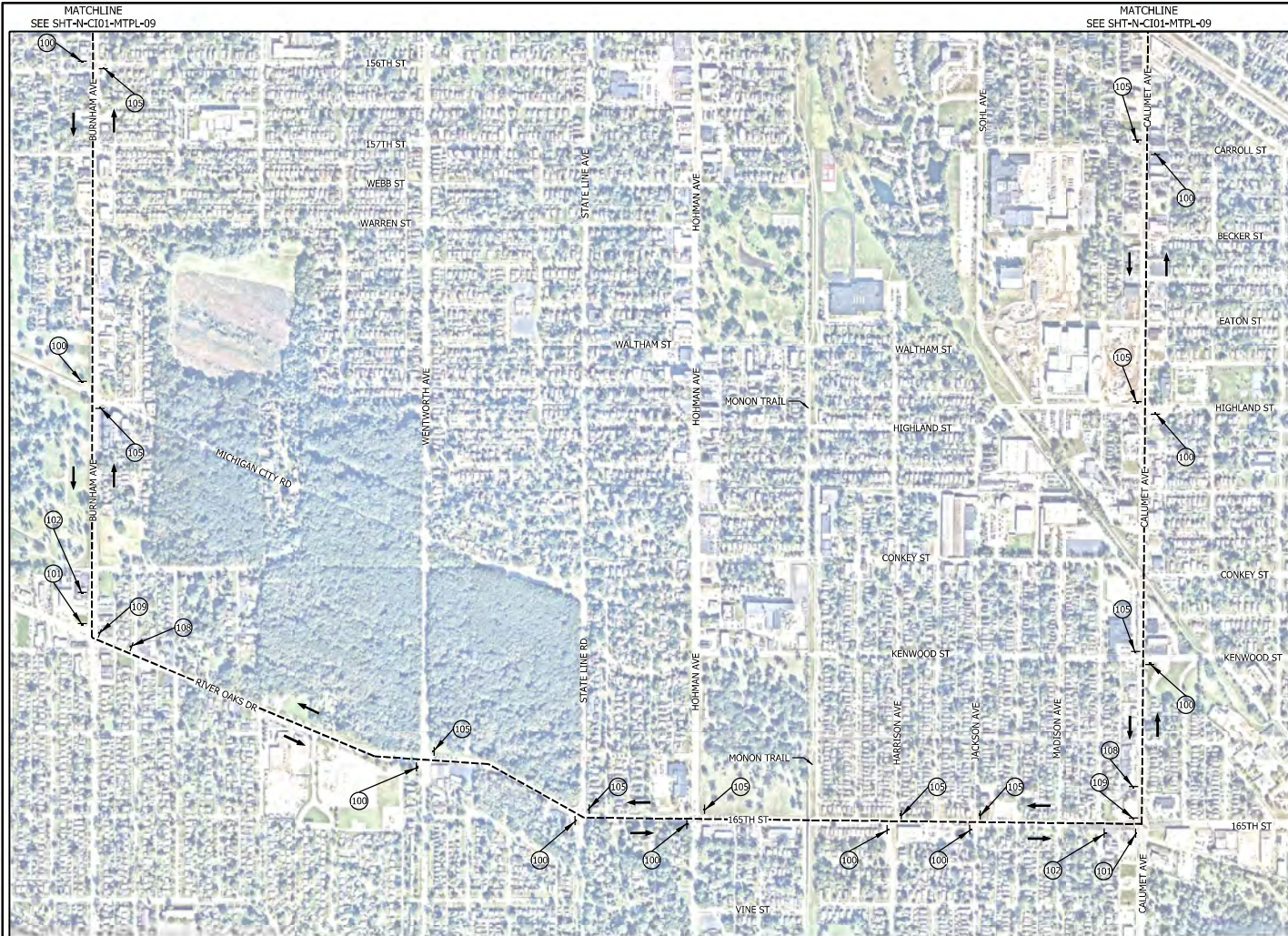
DYER TO HAMMOND, INDIANA

BU:	N-C101
DESIGNED:	A. SIKPOVSKY
DRAWN:	S. KOZLOWSKI
CHECKED:	A. SIKPOVSKY
SCALE:	1"=450'
DATE:	10/20/2021

DWG NO. **N-C101-MTPL-09**

**MAINTENANCE OF TRAFFIC
DETOUR PLAN - TRUCK ROUTE
SHEFFIELD AVENUE CLOSURE**

FOR CONSTRUCTION SHEET NO. **OF**



- NOTES**
- SIGN DESIGNATIONS ARE PER MUTCD.
 - SIGN LOCATIONS ARE APPROXIMATE. SEE BU G-01 DWG. NO. G-C101-GEDT-806 FOR SIGN PLACEMENT.
 - SEE BU G-01 DWG. NO. G-C101-GEDT-824 FOR SIGN POST DETAILS.
 - SEE BU G-01 DWG. NO. G-C101-GEDT-807 AND G-C101-GEDT-808 FOR TYPE III BARRICADE SIGN PLACEMENT.
 - ADVANCED CHANGEABLE MESSAGE SIGNS TO READ "HOHMAN AVE CLOSED | TRUCKS FOLLOW DETOUR"
- LEGEND**
- TYPE III BARRICADE
 - - - SIGN
 - - - - DETOUR ROUTE
 - DIRECTION OF TRAFFIC
 - ▨ WORK SPACE
 - (O) ORANGE
 - 🚚 TYPE B LIGHT

PLOT DATE: 1/17/2021 PLOT TIME: 1:01:21 PM
FILE NAME: S:\PROJECTS\2020\175\175-10391

FHP F.H. PASCHEN
RAGNAR BENSON
JOINT VENTURE

Jacobs

REVISIONS		
ISSUE	DATE	DESCRIPTION

NICD
NORTHERN INDIANA COMMUTER
TRANSPORTATION DISTRICT
33 East Highway 12
Chesterton, Indiana 46304

WEST-LAKE
DYER TO HAMMOND, INDIANA

DATE: 10/20/2021

BU:	N-C11
DESIGNED:	A. SIKPOVSKY
DRAWN:	S. KOZLOWSKI
CHECKED:	A. SIKPOVSKY
SCALE:	1"=450'

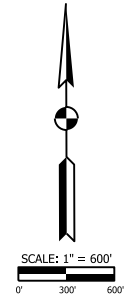
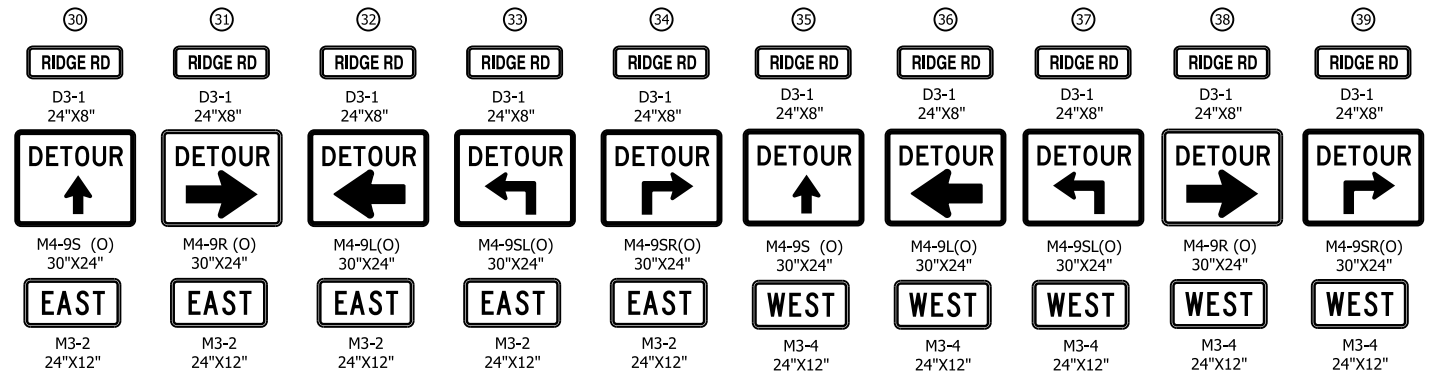
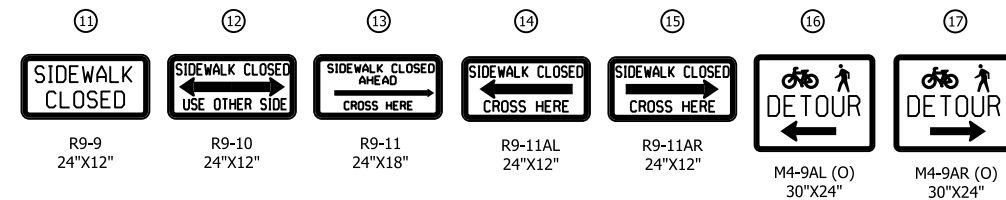
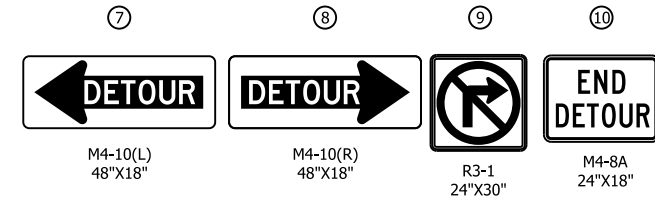
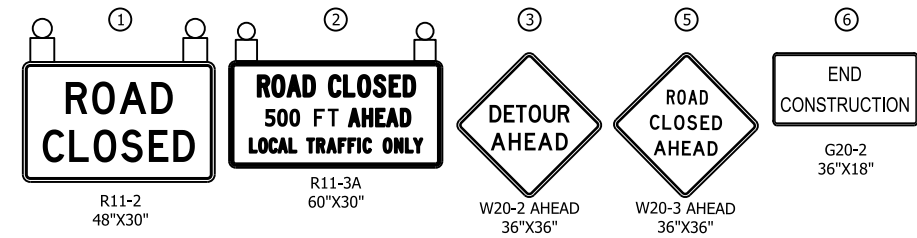
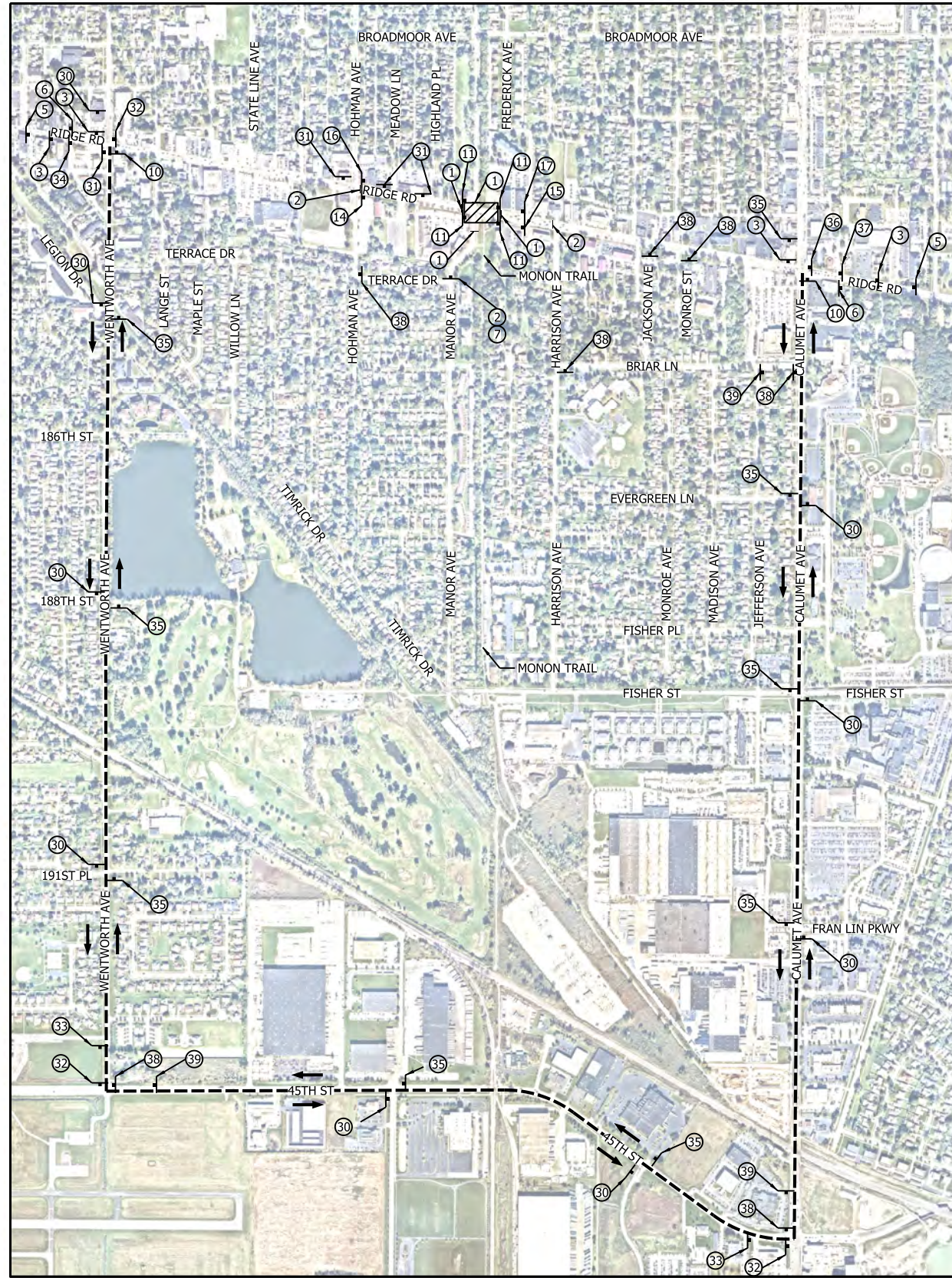
DWG NO. N-C101-MTPL-10

**MAINTENANCE OF TRAFFIC
DETOUR PLAN - TRUCK ROUTE
SHEFFIELD AVENUE CLOSURE**

FOR CONSTRUCTION SHEET NO. **OF**

SINGLE NIGHT FULL CLOSURE

10/30/2024 (8pm) through 10/31/2024 (4am)



NOTES

1. SIGN DESIGNATIONS ARE PER IMUTCD.
2. SIGN LOCATIONS ARE APPROXIMATE. SEE BU G-C01 DWG. NO. G-CI01-GEDT-806 FOR SIGN PLACEMENT.
3. SEE BU G-C01 DWG. NO. G-CI01-GEDT-824A FOR SIGN POST DETAILS.
4. SEE BU G-C01 DWG. NO. G-CI01-GEDT-807 AND G-CI01-GEDT-808 FOR TYPE III BARRICADE SIGN PLACEMENT.
5. CONTRACTOR TO MAINTAIN LOCAL DRIVEWAY ACCESS WITHIN ROAD CLOSURE LIMITS OR PROVIDE ALTERNATIVE ARRANGEMENTS.
6. BROADMOOR AVENUE AND FISHER STREET TO REMAIN OPEN DURING CLOSURE OF RIDGE ROAD.
7. THIS DETOUR SHALL BE USED FOR TRACK CONSTRUCTION ONLY.

LEGEND

- TYPE III BARRICADE
- + SIGN
- - - DETOUR ROUTE
- DIRECTION OF TRAFFIC
- ▨ WORK SPACE
- (O) ORANGE
- TYPE B LIGHT

PLOT DATE: 11/29/2021 PLOT TIME: 1:42:57 PM
FILE NAME: SHT-S-CI05-MTPL-02.dgn

FHP F.H. PASCHEN
R3 RAGNAR BENSON
JOINT VENTURE

Jacobs

REVISIONS		
ISSUE	DATE	DESCRIPTION

NICD
NORTHERN INDIANA COMMUTER
TRANSPORTATION DISTRICT
33 East Highway 12
Chesterton, Indiana 46304

WEST LAKE
CORRIDOR
DYER TO HAMMOND, INDIANA

REGISTERED PROFESSIONAL ENGINEER
DAVID HEATLEY
PE12100055
INDIANA
DATE: 11/30/21

BU:	S-CI05
DESIGNED:	A. SIPKOVSKY
DRAWN:	S. KOZLOWSKI
CHECKED:	A. SIPKOVSKY
SCALE:	1"=600'
DATE:	12/1/2021

FINAL RFC PLANS DWG. NO. S-CI05-MTPL-02

**MAINTENANCE OF TRAFFIC
DETOUR PLAN - RIDGE ROAD**

FOR CONSTRUCTION SHEET NO. 13 OF 87