



NICTD West Lake Corridor Project Construction Update

Week of 6.4.2024 & 6.11.2024

Hammond

- **Closures**
 - Russell Street (between Hohman Avenue and Lyman Avenue)
 - Russel Street is closed at West Lake Corridor
 - Follow posted detour.
 - State Street
 - Closure is currently active.
 - Willow Court is open.
 - Hohman Avenue (at SSL Crossing)
 - Closure is currently active.
 - Follow posted detour.
 - Hohman Avenue/Michigan Avenue
 - Closure is currently active through 7/3/2024.
 - Follow posted detour.
 - Dearborn at Gostlin Street will be closed permanently.
 - Hanover Street has been permanently closed between Wabash and Sheffield Avenues.
- **Monon Trail Closure**
 - Monon closed from 173rd Street to Little Calumet River
 - Closed indefinitely until rail operation has been completed/pedestrian bridge is installed.
 - No connection to Lackawanna Trail.
- **Rail Construction**
 - Track work from Douglas Street heading North on Elevated Structures.
 - Rail Contractor spreading ballast on elevated structures.
 - No impact to vehicular traffic
- **Electrical Construction**
 - Installing Overhead Catenary System (OCS) in Hammond.
 - No impact to vehicular traffic.
- **Structure Work for Bridges, Elevated Structures, and Retaining Walls**
 - Cable handrail is also being installed.
 - No impact to vehicular traffic.

**For additional project information please visit:
www.nictdwestlake.com or www.fhp-rb.com**

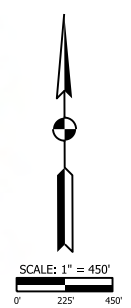
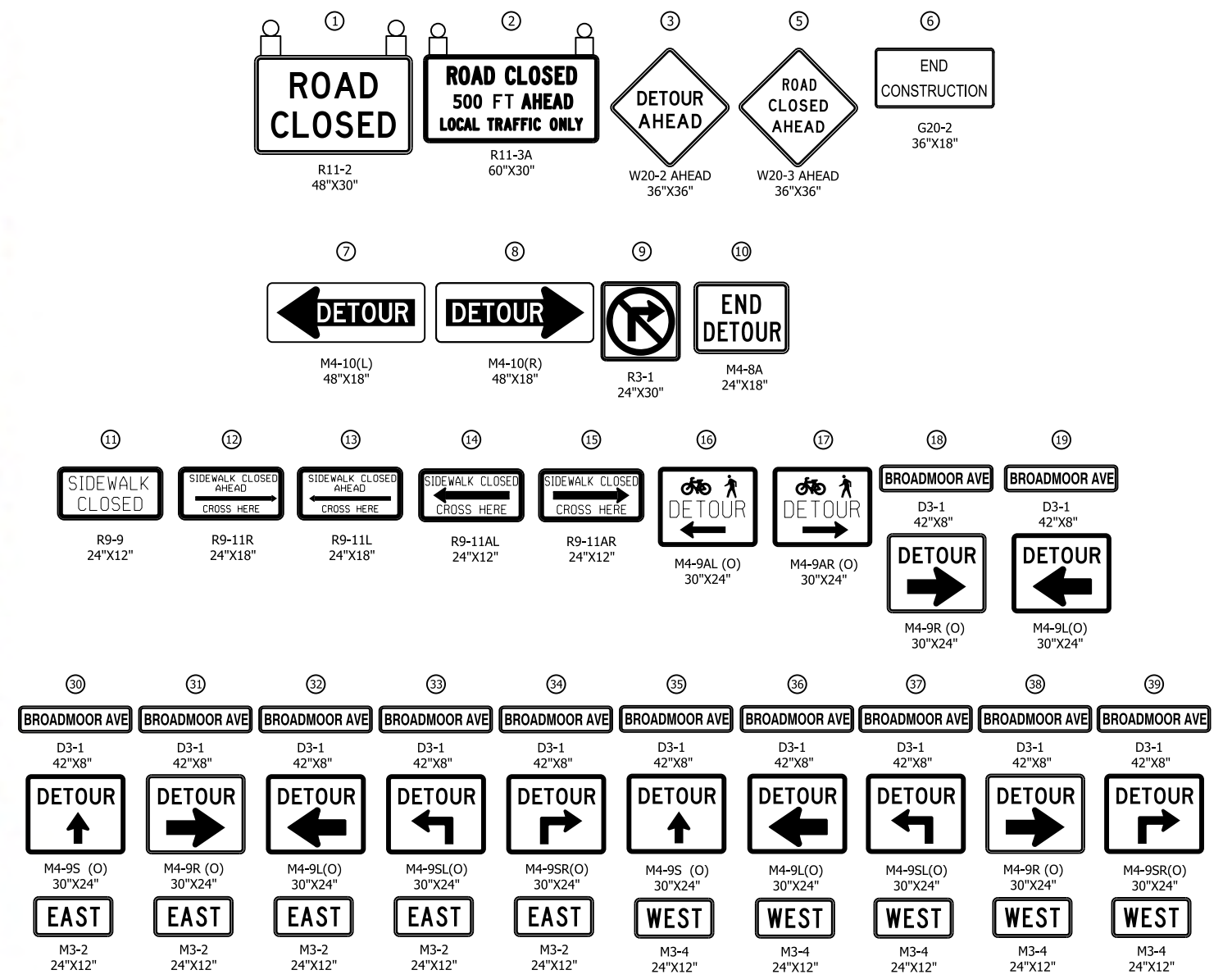
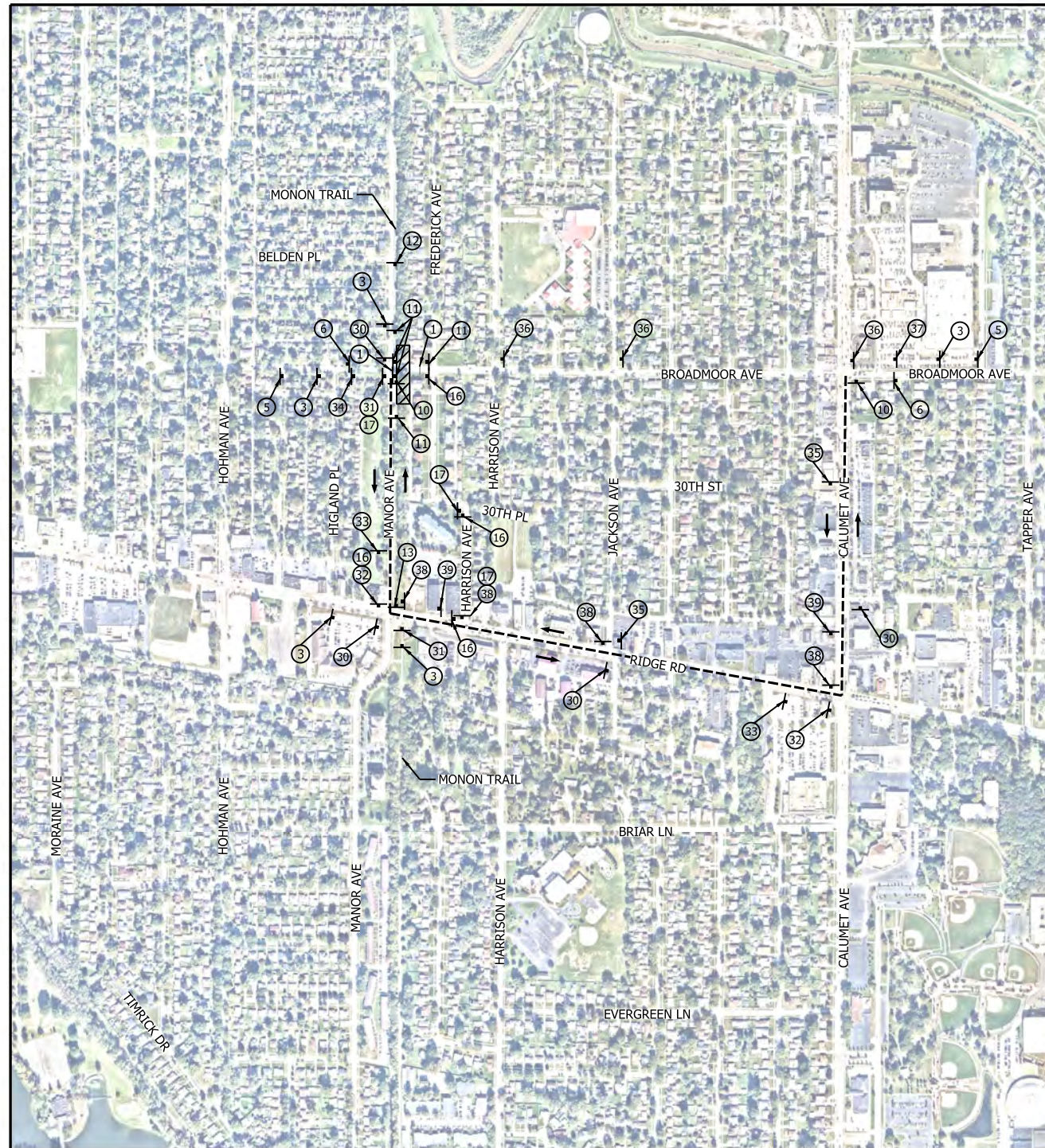
- **Station Construction**
 - Contractor finishing future Hammond Gateway Station Building
- Road Construction
 - Contractor installing roadway signage and pavement markings at various intersections in the City of Hammond
 - Traffic will be maintained with a Roadway Flagger or partial lane closures. Minimal impact to vehicular traffic.

Munster

- **Closures**
 - Broadmoor Avenue
 - Closure begins 6/5/2024 through 6/12/2024.
 - Follow posted detour.
- **Elevated Structure Work at 45th Street**
 - Installing metal deck on structure North of 45th Street.
 - See attached lane closure details.
- **Fence Installation**
 - Installing post and fence at Little Calumet River.
 - No impact to vehicular traffic
- Road Construction
 - Contractor installing roadway signage and pavement markings at various intersections in the Town of Munster
 - Traffic will be maintained with a Roadway Flagger or partial lane closures. Minimal impact to vehicular traffic.
- **Monon Trail** will be closed for the foreseeable future from Little Calumet River to Fisher Street
 - Closure will last until rail operation is complete from Fisher-Ridge & Ridge to Little Calumet. Tunnel at Belden Place is now open. Access from Manor Avenue or Fredrick Avenue. Monon Trail remains closed in this area due to Bridge construction at the Little Calumet River.
- **Station Construction**
 - Munster-Dyer East Platform Access
 - Station and Platform excavation complete.
 - Setting of Precast foundations for platform will be in the coming weeks.
 - Concrete work ongoing at station.
 - Trucking operations on Allison Road, minimal impacts to vehicular traffic.
- **Munster-Dyer East Parking Lot**
 - Pump Station Construction
 - Backfill of pump station and future utility work.
 - Trucking operations on Allison Road, minimal impacts to vehicular traffic.

**For additional project information please visit:
www.nictdwestlake.com or www.fhp-rb.com**

PLOT DATE: 11/29/2021 PLOT TIME: 1:38:57 PM
 FILE NAME: SHT-S-CI05-MTPL-03.dgn



NOTES

- SIGN DESIGNATIONS ARE PER IMUTCD.
- SIGN LOCATIONS ARE APPROXIMATE. SEE BU G-C01 DWG. NO. G-CI01-GEDT-806 FOR SIGN PLACEMENT.
- SEE BU G-C01 DWG. NO. G-CI01-GEDT-824A FOR SIGN POST DETAILS.
- SEE BU G-C01 DWG. NO. G-CI01-GEDT-807 AND G-CI01-GEDT-808 FOR TYPE III BARRICADE SIGN PLACEMENT.
- RIDGE STREET AND FISHER STREET TO REMAIN OPEN DURING CLOSURE OF BROADMOOR AVE.

LEGEND

- TYPE III BARRICADE
- + SIGN
- DETOUR ROUTE
- DIRECTION OF TRAFFIC
- ▨ WORK SPACE
- (O) ORANGE
- TYPE B LIGHT

FINAL RFC PLANS DWG. NO. S-CI05-MTPL-03

FHP F.H. PASCHEN RAGNAR BENSON JOINT VENTURE

Jacobs

REVISIONS		
ISSUE	DATE	DESCRIPTION

NICD

NORTHERN INDIANA COMMUTER TRANSPORTATION DISTRICT
 33 East Highway 12
 Chesterton, Indiana 46304

WEST LAKE CORRIDOR

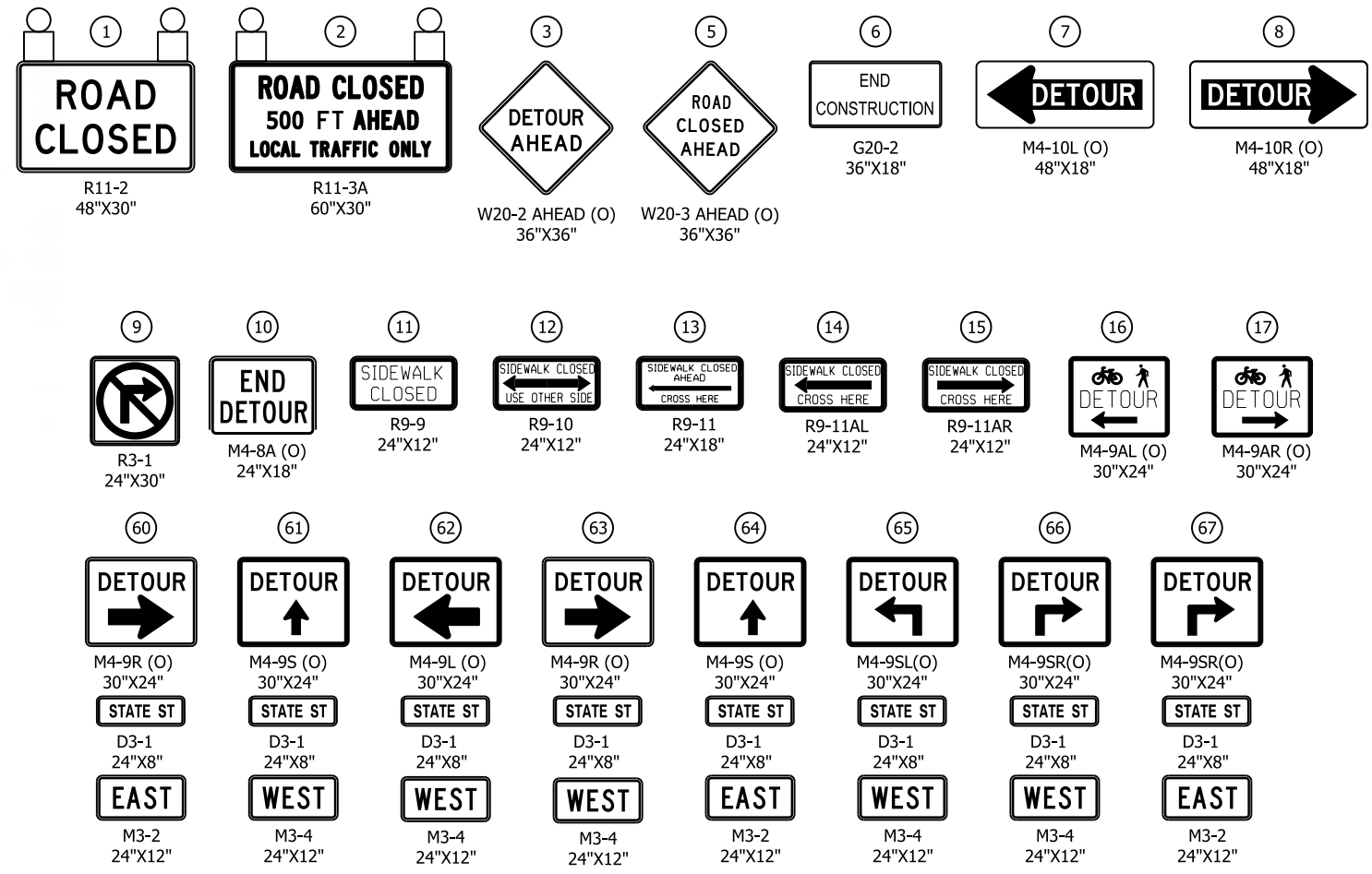
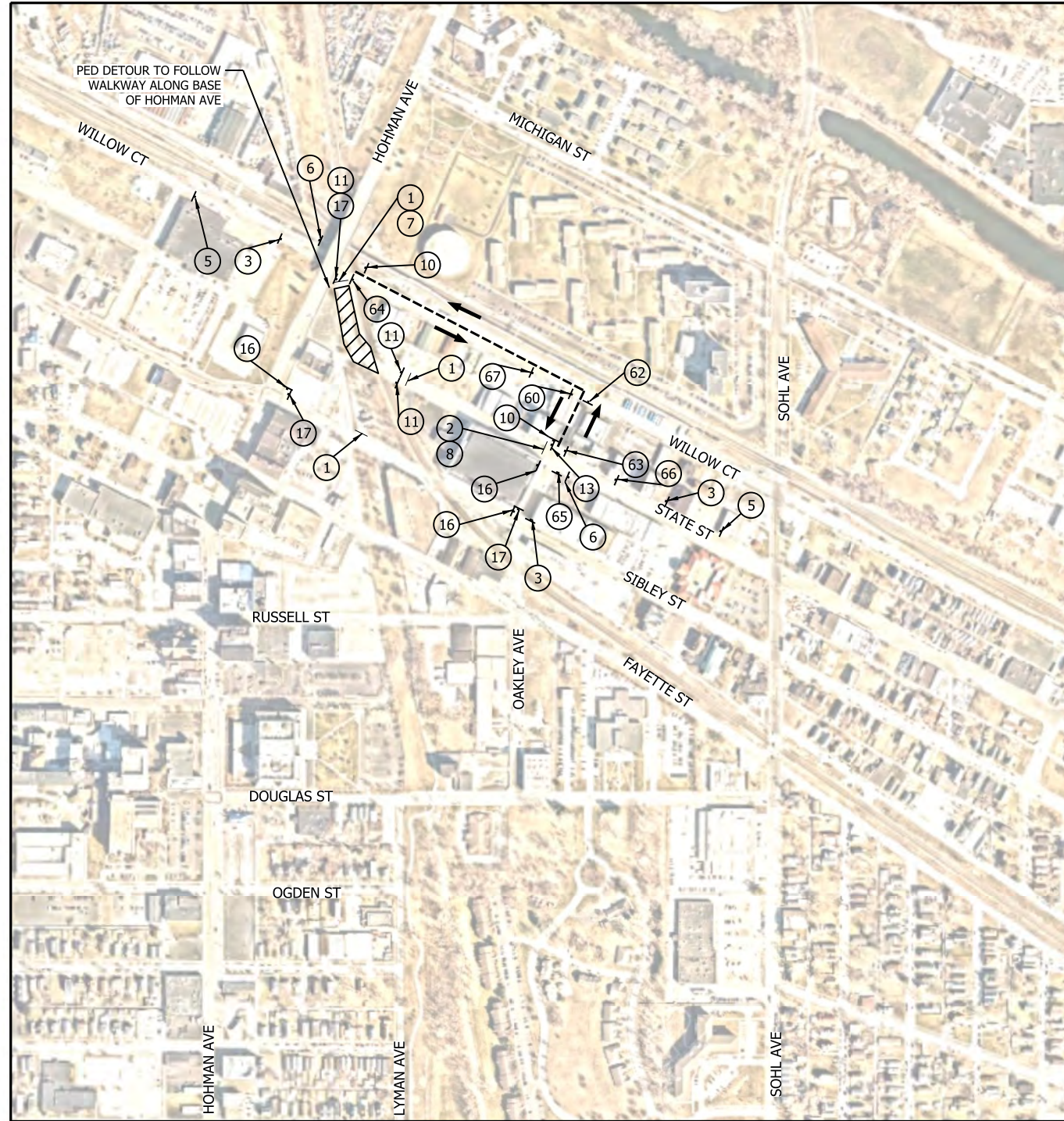
DYER TO HAMMOND, INDIANA

PROFESSIONAL ENGINEER
 PE12100055
 DATE: 11/30/21

BU:	S-CI05
DESIGNED:	A. SIPKOVSKY
DRAWN:	S. KOZLOWSKI
CHECKED:	A. SIPKOVSKY
SCALE:	1"=450'
DATE:	12/1/2021

**MAINTENANCE OF TRAFFIC
 DETOUR PLAN - BROADMOOR AVENUE**

FOR CONSTRUCTION SHEET NO. 14 OF 87



NOTES

- SIGN DESIGNATIONS ARE PER IMUTCD.
- SIGN LOCATIONS ARE APPROXIMATE. SEE BU G-C01 DWG. NO. G-CI01-GEDT-828 FOR SIGN PLACEMENT.
- SEE BU G-C01 DWG. NO. G-CI01-GEDT-820, G-CI01-GEDT-821 AND G-CI01-GEDT-822 FOR SIGN POST DETAILS.
- SEE BU G-C01 DWG. NO. G-CI01-GEDT-807 AND G-CI01-GEDT-808 FOR TYPE III BARRICADE APPLICATION STANDARDS.
- THE CONTRACTOR SHALL MAINTAIN FREE PASSAGE OF PEDESTRIANS ON ONE SIDE OF STATE STREET WHEN PRACTICABLE.
- TRAFFIC SIGNALS AT STATE ST AND WILLOW CT TO BE BAGGED DURING CLOSURE OF STATE ST.

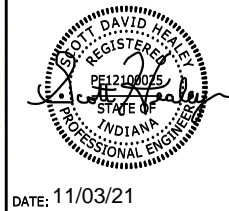
LEGEND

- TYPE III BARRICADE
- SIGN
- - - - DETOUR ROUTE
- DIRECTION OF TRAFFIC
- ▨ WORK SPACE
- (O) ORANGE
- TYPE B LIGHT

PLOT DATE: 11/3/2021 PLOT TIME: 1:01:08 PM
FILE NAME: SHT-N-CI01-MTPL-05.dgn



REVISIONS		
ISSUE	DATE	DESCRIPTION



BU:	N-CI01
DESIGNED:	A. SIPKOVSKY
DRAWN:	S. KOZLOWSKI
CHECKED:	A. SIPKOVSKY
SCALE:	1"=300'
DATE:	10/20/2021

FINAL RFC PLANS DWG NO. N-CI01-MTPL-05

**MAINTENANCE OF TRAFFIC
DETOUR PLAN - STATE STREET**

FOR CONSTRUCTION SHEET NO. 15 OF 78

PLOT DATE: 7/24/2023 PLOT TIME: 10:55:01 PM
 FILE NAME: SHT-N-CI01-MTPL-11.dgn



REVISIONS		
ISSUE	DATE	DESCRIPTION



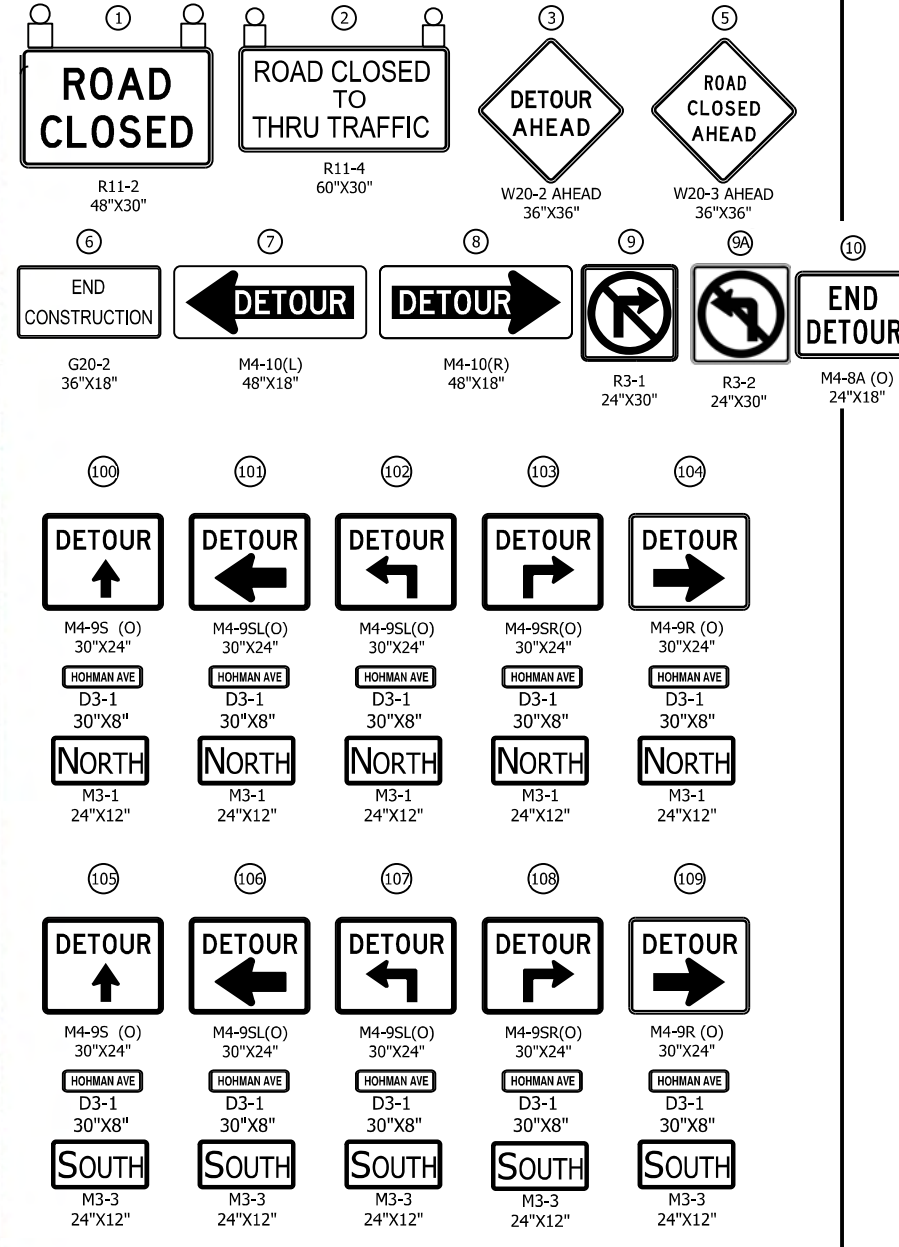
BU:	N-CI01
DESIGNED:	A. SIPKOVSKY
DRAWN:	S. KOZLOWSKI
CHECKED:	A. SIPKOVSKY
SCALE:	1"=450'
DATE:	10/20/2021

DWG NO. _____

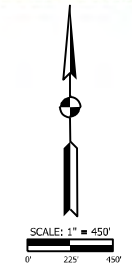
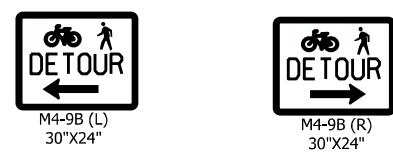
**MAINTENANCE OF TRAFFIC
 DETOUR PLAN - MICHIGAN STREET
 AND HOHMAN AVENUE**

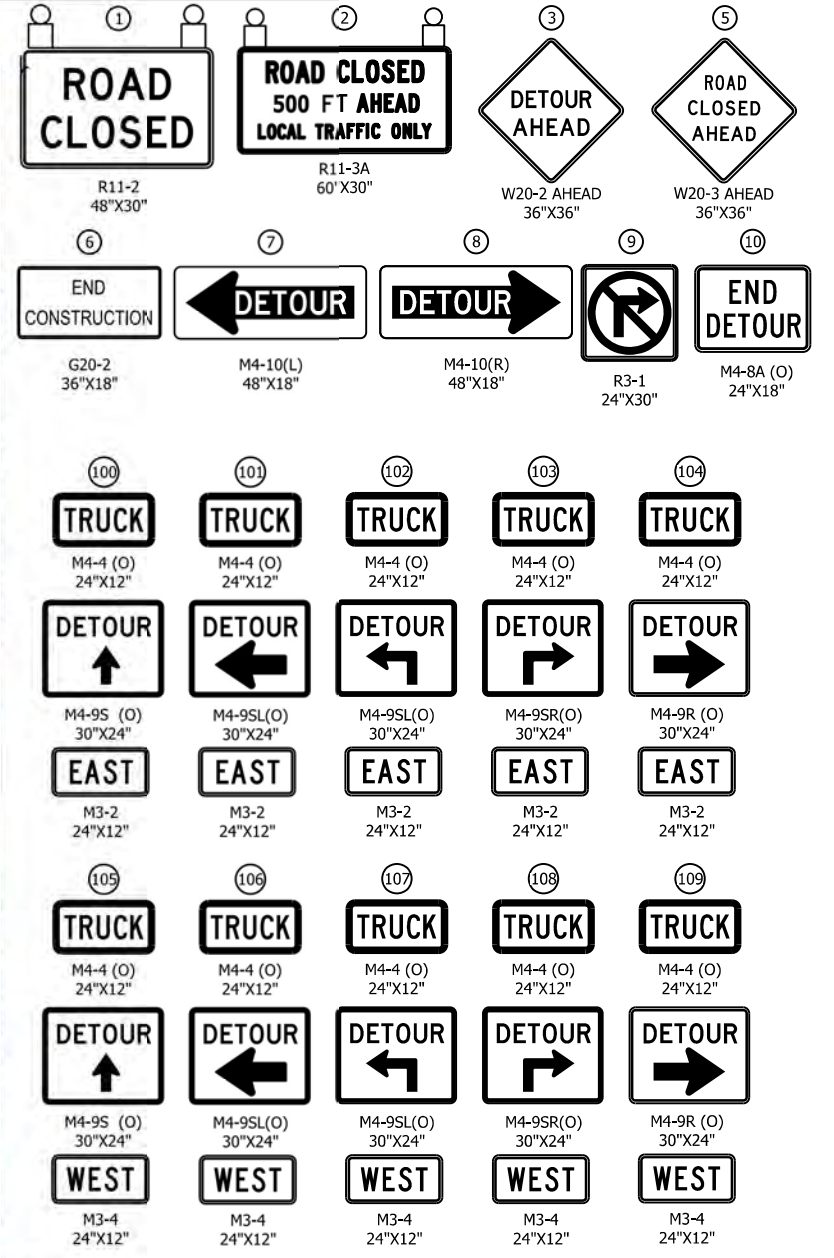
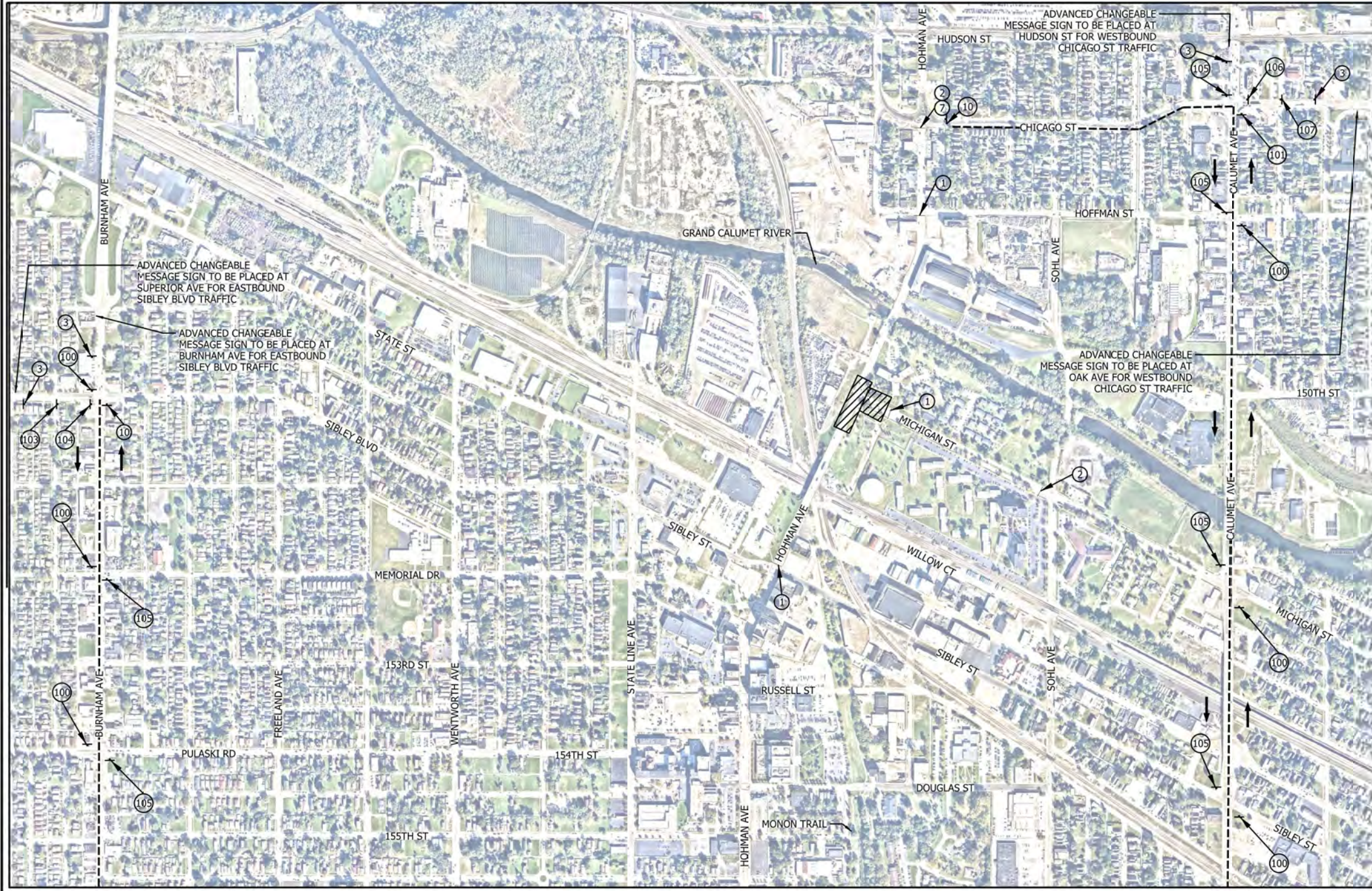
FOR CONSTRUCTION

SHEET NO. **OF**



- NOTES**
- SIGN DESIGNATIONS ARE PER IMUTCD.
 - SIGN LOCATIONS ARE APPROXIMATE. SEE BU G-C01 DWG. NO. G-CI01-GEDT-806 FOR SIGN PLACEMENT.
 - SEE BU G-C01 DWG. NO. G-CI01-GEDT-824A FOR SIGN POST DETAILS.
 - SEE BU G-C01 DWG. NO. G-CI01-GEDT-807 AND G-CI01-GEDT-808 FOR TYPE III BARRICADE SIGN PLACEMENT.
 - DETOUR FOR MICHIGAN ST TO REMAIN THROUGHOUT CONSTRUCTION.
 - NB AND SB HOHMAN AVE DETOUR ARE TO BE USED DURING NIGHTTIME OVERHEAD BRIDGE OPERATIONS. HOHMAN AVE TO REMAIN OPEN DURING THE DAY USING STAGED MOT.
- LEGEND**
- TYPE III BARRICADE
 - SIGN
 - DETOUR ROUTE
 - DIRECTION OF TRAFFIC
 - ▨ WORK SPACE
 - (O) ORANGE
 - TYPE B LIGHT

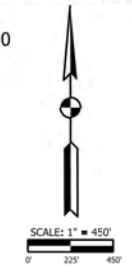




- NOTES**
- SIGN DESIGNATIONS ARE PER IMUTCD.
 - SIGN LOCATIONS ARE APPROXIMATE. SEE BU G-C01 DWG. NO. G-C101-GEDT-806 FOR SIGN PLACEMENT.
 - SEE BU G-C01 DWG. NO. G-C101-GEDT-824A FOR SIGN POST DETAILS.
 - SEE BU G-C01 DWG. NO. G-C101-GEDT-807 AND G-C101-GEDT-808 FOR TYPE III BARRICADE SIGN PLACEMENT.
 - ADVANCED CHANGEABLE MESSAGE SIGNS TO READ "HOHMAN AVE CLOSED | TRUCKS FOLLOW DETOUR"
- LEGEND**
- TYPE III BARRICADE
 - - - SIGN
 - - - DETOUR ROUTE
 - DIRECTION OF TRAFFIC
 - ▨ WORK SPACE
 - (O) ORANGE
 - ⊞ TYPE B LIGHT

MATCHLINE
SEE SHT-N-C101-MTPL-10

MATCHLINE
SEE SHT-N-C101-MTPL-10



PLOT DATE: 11/3/2021 PLOT TIME: 12:59:25 PM
FILE NAME: SHT-N-C101-MTPL-09.dgn



REVISIONS		
ISSUE	DATE	DESCRIPTION



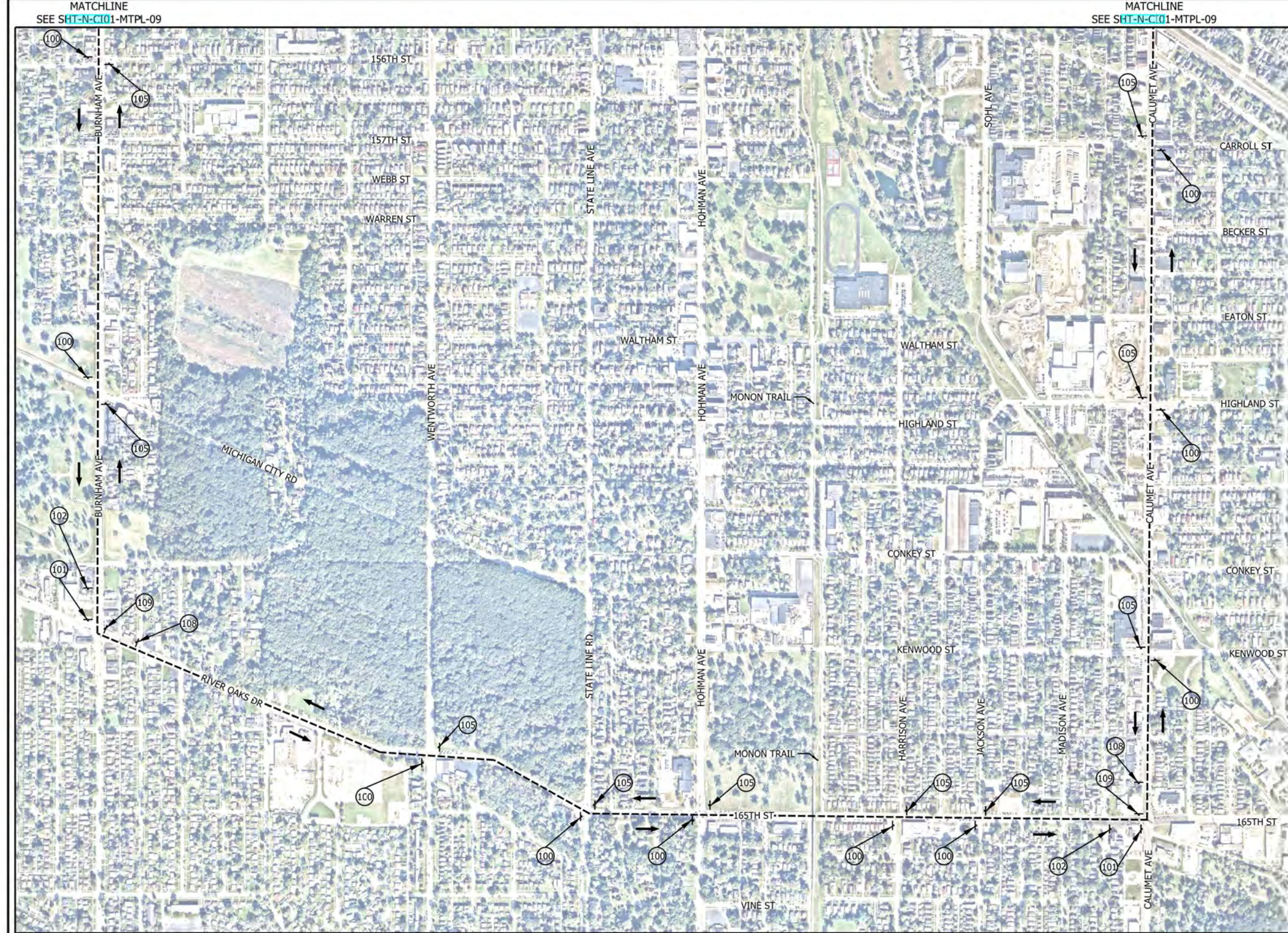
BU:	N-C101
DESIGNED:	A. SIPKOVSKY
DRAWN:	S. KOZLOWSKI
CHECKED:	A. SIPKOVSKY
SCALE:	1"=450'
DATE:	10/20/2021

FINAL RFC PLANS DWG. NO. N-C101-MTPL-09

**MAINTENANCE OF TRAFFIC
DETOUR PLAN - TRUCK ROUTE
HOHMAN AVENUE CLOSURE**

FOR CONSTRUCTION SHEET NO. 18 OF 78

PLOT DATE: 11/3/2021 PLOT TIME: 1:01:21 PM
 FILE NAME: SHT-N-C101-MTPL-10.dgn



① ROAD CLOSED R11-2 48"X30"	② ROAD CLOSED 500 FT AHEAD LOCAL TRAFFIC ONLY R11-3A 60"X30"	③ DETOUR AHEAD W20-2 AHEAD 36"X36"	④ ROAD CLOSED AHEAD W20-3 AHEAD 36"X36"
⑥ END CONSTRUCTION G20-2 36"X18"	⑦ DETOUR (Left Arrow) M4-10(L) 48"X18"	⑧ DETOUR (Right Arrow) M4-10(R) 48"X18"	⑨ NO RIGHT TURN R3-1 24"X30"
⑩ END DETOUR M4-8A (O) 24"X18"	⑩① TRUCK M4-4 (O) 24"X12"	⑩② TRUCK M4-4 (O) 24"X12"	⑩③ TRUCK M4-4 (O) 24"X12"
⑩④ DETOUR (Up Arrow) M4-9S (O) 30"X24"	⑩⑤ DETOUR (Left Arrow) M4-9SL(O) 30"X24"	⑩⑥ DETOUR (Left Arrow) M4-9SL(O) 30"X24"	⑩⑦ DETOUR (Right Arrow) M4-9SR(O) 30"X24"
⑩⑧ EAST M3-2 24"X12"	⑩⑨ EAST M3-2 24"X12"	⑩⑩ EAST M3-2 24"X12"	⑩⑪ EAST M3-2 24"X12"
⑩⑫ TRUCK M4-4 (O) 24"X12"	⑩⑬ TRUCK M4-4 (O) 24"X12"	⑩⑭ TRUCK M4-4 (O) 24"X12"	⑩⑮ TRUCK M4-4 (O) 24"X12"
⑩⑯ DETOUR (Up Arrow) M4-9S (O) 30"X24"	⑩⑰ DETOUR (Left Arrow) M4-9SL(O) 30"X24"	⑩⑱ DETOUR (Left Arrow) M4-9SL(O) 30"X24"	⑩⑲ DETOUR (Right Arrow) M4-9SR(O) 30"X24"
⑩⑳ WEST M3-4 24"X12"	⑩㉑ WEST M3-4 24"X12"	⑩㉒ WEST M3-4 24"X12"	⑩㉓ WEST M3-4 24"X12"

- NOTES**
- SIGN DESIGNATIONS ARE PER IMUTCD.
 - SIGN LOCATIONS ARE APPROXIMATE. SEE BU G-C01 DWG. NO. G-C101-GFDT-806 FOR SIGN PLACEMENT.
 - SEE BU G-C01 DWG. NO. G-C101-GFDT-824A FOR SIGN POST DETAILS.
 - SEE BU G-C01 DWG. NO. G-C101-GFDT-807 AND G-C101-GFDT-808 FOR TYPE III BARRICADE SIGN PLACEMENT.
 - ADVANCED CHANGEABLE MESSAGE SIGNS TO READ "HOHMAN AVE CLOSED | TRUCKS FOLLOW DETOUR"
- LEGEND**
- TYPE III BARRICADE
 - ▲ SIGN
 - DETOUR ROUTE
 - ➔ DIRECTION OF TRAFFIC
 - ▨ WORK SPACE
 - (O) ORANGE
 - TYPE B LIGHT



FINAL RFC PLANS DWG. NO. N-C101-MTPL-10

FHP F.H. PASCHEN RAGNAR BENSON JOINT VENTURE

Jacobs

REVISIONS		
ISSUE	DATE	DESCRIPTION

NICD
 NORTHERN INDIANA COMMUTER TRANSPORTATION DISTRICT
 33 East Highway 12
 Chesterton, Indiana 46304

WEST LAKE CORRIDOR
 DYER TO HAMMOND, INDIANA

REGISTERED PROFESSIONAL ENGINEER
 STATE OF INDIANA
 DATE: 11/03/21

BU:	N-C101
DESIGNED:	A. SIPKOVSKY
DRAWN:	S. KOZLOWSKI
CHECKED:	A. SIPKOVSKY
SCALE:	1"=450'
DATE:	10/20/2021

MAINTENANCE OF TRAFFIC DETOUR PLAN - TRUCK ROUTE HOHMAN AVENUE CLOSURE

FOR CONSTRUCTION SHEET NO. 19 OF 78

PLOT DATE: 2/9/2022 PLOT TIME: 3:03:37 PM
 FILE NAME: SHT-N-C104-MTPL-01.dwg



JACOBS

REVISIONS		
ISSUE	DATE	DESCRIPTION

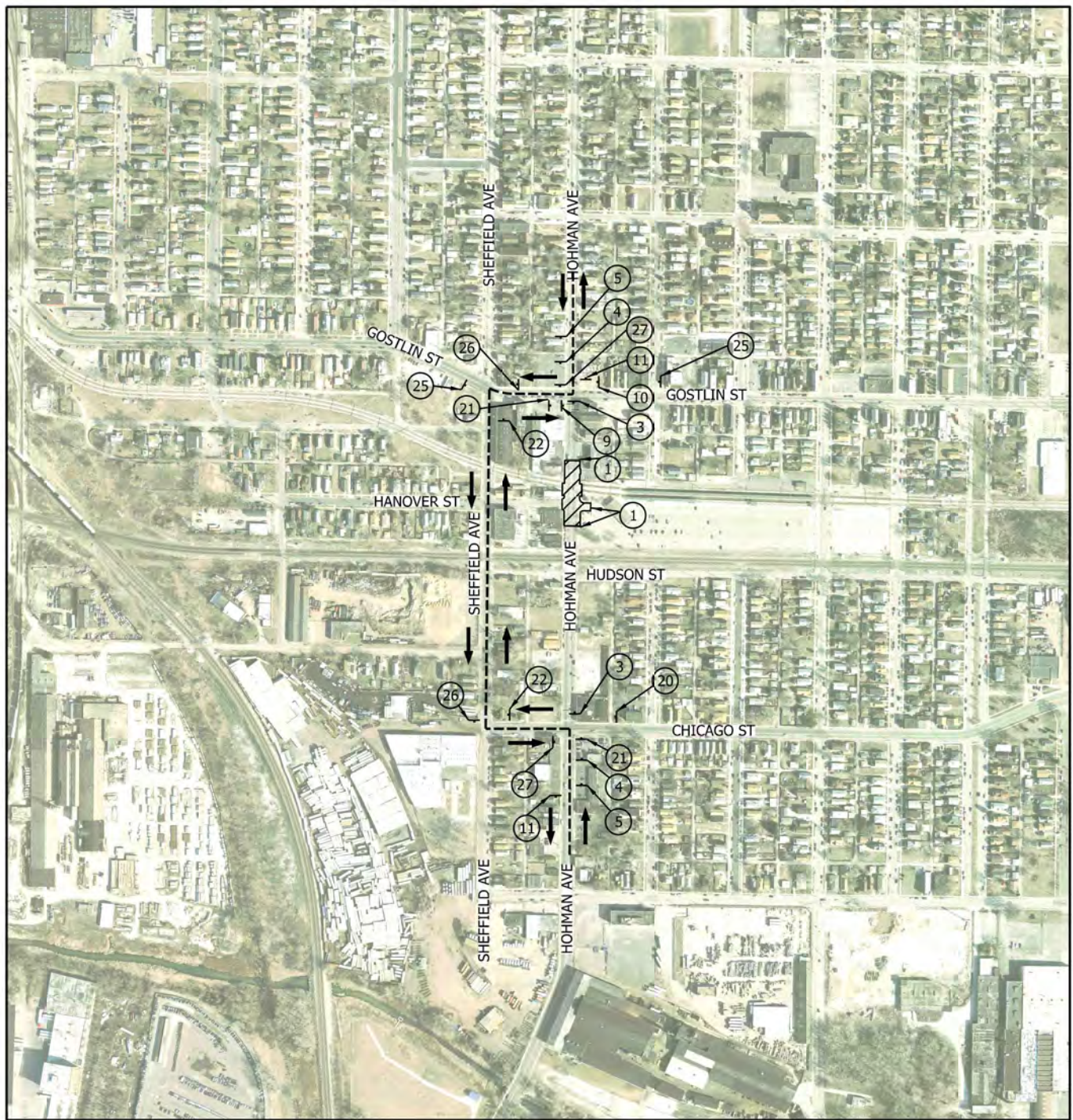


BU:	N-C104
DESIGNED:	A. SIPKOVSKY
DRAWN:	S. KUMAR
CHECKED:	A. SIPKOVSKY
SCALE:	1"=300'
DATE:	12/13/2021

FINAL RFC PLANS DWG NO. N-C104-MTPL-02

**MAINTENANCE OF TRAFFIC
 DETOUR PLAN - HOHMAN AVENUE**

FOR CONSTRUCTION SHEET NO. 9 OF 77



① ROAD CLOSED R11-2 48"X30"	② ROAD CLOSED 1 MILE AHEAD LOCAL TRAFFIC ONLY R11-3A 60"X30"	③ ROAD CLOSED TO THRU TRAFFIC R11-4 60"X30"	④ DETOUR AHEAD W20-2 AHEAD (O) 36"X36"	⑤ ROAD CLOSED AHEAD W20-3 AHEAD (O) 36"X36"
⑥ END CONSTRUCTION G20-2 36"X18"	⑦ DETOUR M4-10L (O) 48"X18"	⑧ DETOUR M4-10R (O) 48"X18"	⑨ NO RIGHT TURN R3-1 24"X30"	⑩ NO LEFT TURN R3-2 24"X30"
⑪ END DETOUR M4-8A 24"X18"	⑫ SIDEWALK CLOSED R9-9 24"X12"	⑳ DETOUR M4-9S(O) 30"X24"	㉑ DETOUR M4-9L(O) 30"X24"	㉒ DETOUR M4-9R(O) 30"X24"
㉓ DETOUR M4-9SL(O) 30"X24"	㉔ DETOUR M4-9SR(O) 30"X24"	㉕ DETOUR M4-9S(O) 30"X24"	㉖ DETOUR M4-9L(O) 30"X24"	㉗ DETOUR M4-9R(O) 30"X24"
HOHMAN AVE D3-1 39"X8"	HOHMAN AVE D3-1 39"X8"	HOHMAN AVE D3-1 39"X8"	HOHMAN AVE D3-1 39"X8"	HOHMAN AVE D3-1 39"X8"
NORTH M3-1	NORTH M3-1	NORTH M3-1	NORTH M3-1	SOUTH M3-3
SOUTH M3-3	SOUTH M3-3	SOUTH M3-3		

- NOTES**
- SIGN DESIGNATIONS AS ARE PER IMUTCD.
 - SIGN LOCATIONS ARE APPROXIMATE. SEE BU G-C01 DWG NO. G-CI01-GEDT-818 FOR SIGN PLACEMENT.
 - SEE BU G-C01 DWG NO. G-CI01-GEDT-820 FOR SIGN POST DETAILS.
 - CONTRACTOR SHALL NOT CLOSE HOHMAN AND SHEFFIELD AT THE SAME TIME UNLESS APPROVED BY THE HAMMOND CITY ENGINEER OR DESIGNEE.
- LEGEND**
- TYPE III BARRICADE
 - SIGN
 - DETOUR ROUTE
 - DIRECTION OF TRAFFIC
 - ▨ WORK SPACE
 - (O) ORANGE

