



NICTD West Lake Corridor Project Construction Update

Week of 1.3.2023 & 1.9.2023

Hammond

- **Closures**
 - Sibley Street/Hohman Avenue
 - Closure Begins on 1/4/2023 through 1/20/2023.
 - See Attached Detour.
- **Utility Relocation, Sewer & Water**
 - Drainage Removals/Installation
 - Sibley Street (Between Hohman Avenue and First Baptist Church)
 - ⑩ Working on the closed State Street intersection
 - ⑩ Follow Posted Detours
 - Future Hammond Gateway Station
 - ⑩ No impact to vehicular traffic
- Retaining Wall Between Sibley Street and Fayette Street
 - Receiving Modular Concrete Blocks
 - Trucking Operations through City of Hammond roadways, minimal impact to vehicular traffic.
 - Setting and Backfilling Concrete Blocks
- **Monon Trail Closure**
 - Monon closed from Douglas Street to Little Calumet River
 - No connection to Lackawanna Trail.
- Hanover Street will be permanently closed between Wabash and Sheffield Avenues.
- Dearborn at Gostlin Street will be closed permanently.
- **Substructure Work for Bridges, Elevated Structures, and Retaining Walls**
 - Michigan/Hohman.
 - Forming Bridge Abutments
 - Driving Production Pile
 - Setting Steel
 - Blaine Avenue Retaining Wall
 - Earth excavation and wall construction between Kenwood and 165th Street
 - On-going through weeks of January 3rd and January 9th.

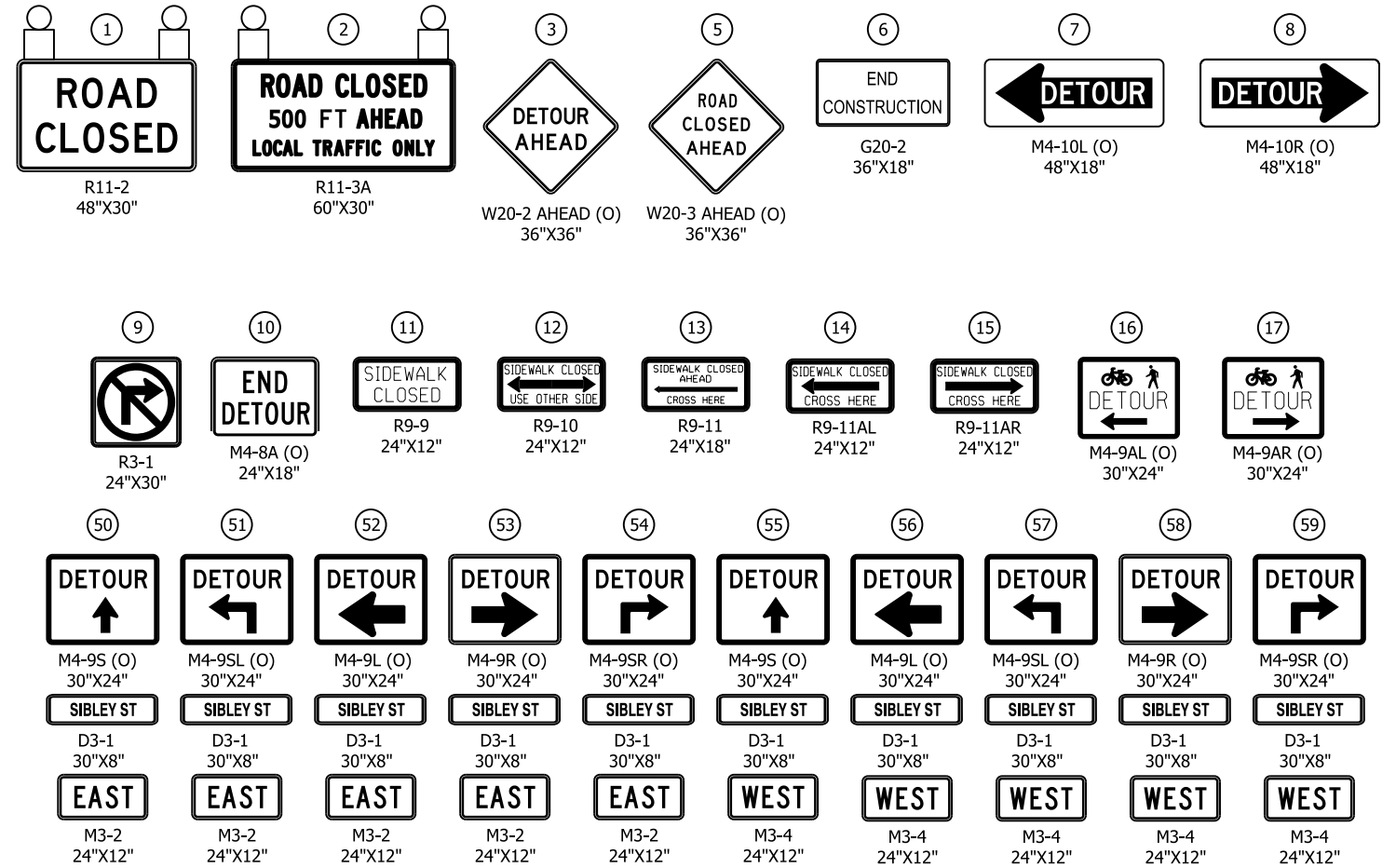
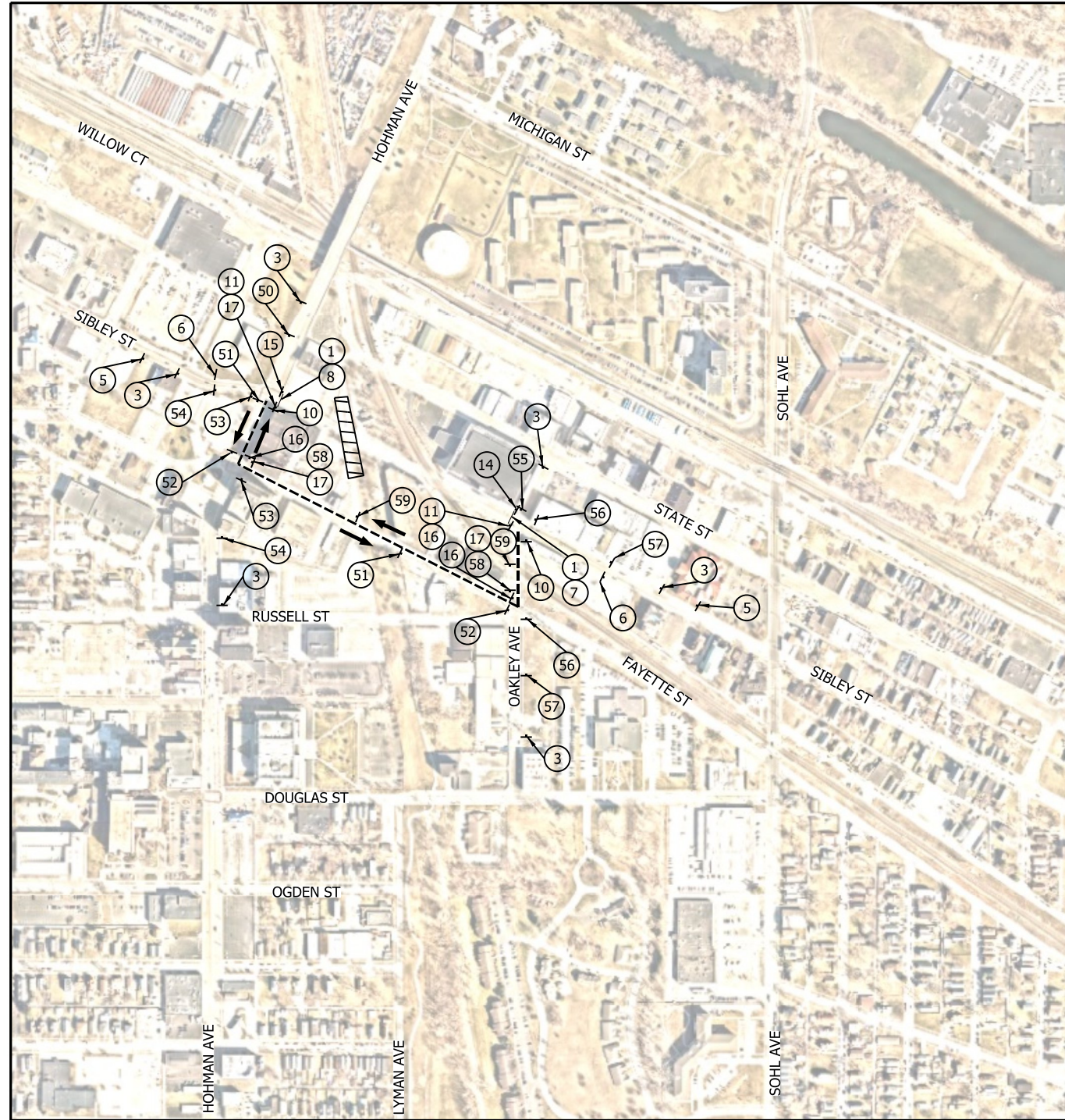
Munster

- NIPSCO & Telecommunications Relocations.
- Retaining Wall between Little Calumet River and Broadmoor
 - Retaining Wall excavation/framing continues along Manor Ave. North and South of Broadmoor.
 - Trucking operations through the Town of Munster, minimal impact to vehicular traffic.
- Monon Trail will be closed for the foreseeable future from Little Calumet River to Ridge Road.
- Structure work at the Little Calumet River.
 - Trucking operations on Manor Avenue, minimal impact to vehicular traffic.
- Site Excavation at Future Munster-Dyer Station.
 - Trucking operations along Columbia Avenue in Munster.
- Site Excavation between Ridge Road and Fisher Street
 - Trucking operations along Manor, minimal impact to vehicular traffic.
- Utility Relocation: Storm, Sanitary & Water
 - Drainage Installation near retaining wall between Broadmoor and Little Calumet River.

Dyer

- No work anticipated for this time period.

**For additional project information please visit:
www.nictdwestlake.com or www.fhp-rb.com**

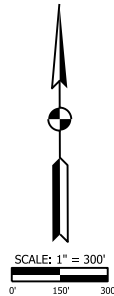


NOTES

- SIGN DESIGNATIONS ARE PER IMUTCD.
- SIGN LOCATIONS ARE APPROXIMATE. SEE BU G-C01 DWG. NO. G-CI01-GEDT-828 FOR SIGN PLACEMENT.
- SEE BU G-C01 DWG. NO. G-CI01-GEDT-820, G-CI01-GEDT-821 AND G-CI01-GEDT-822 FOR SIGN POST DETAILS.
- SEE BU G-C01 DWG. NO. G-CI01-GEDT-807 AND G-CI01-GEDT-808 FOR TYPE III BARRICADE APPLICATION STANDARDS.
- THE CONTRACTOR SHALL MAINTAIN FREE PASSAGE OF PEDESTRIANS ON ONE SIDE OF SIBLEY STREET WHEN PRACTICABLE.
- THE CONTRACTOR MUST PROVIDE ACCESS TO/FROM THE FIRST BAPTIST CHURCH PROPERTY AND PARKING GARAGE OR MAKE ACCOMMODATIONS AGREEABLE TO FIRST BAPTIST CHURCH.

LEGEND

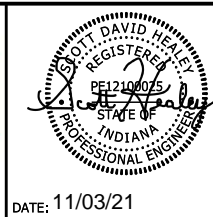
- TYPE III BARRICADE
- - - SIGN
- - - - DETOUR ROUTE
- DIRECTION OF TRAFFIC
- ▨ WORK SPACE
- (O) ORANGE
- TYPE B LIGHT



PLOT DATE: 11/3/2021 PLOT TIME: 1:00:25 PM
FILE NAME: SHT-N-CI01-MTPL-04.dgn



REVISIONS		
ISSUE	DATE	DESCRIPTION



BU:	N-CI01
DESIGNED:	A. SIPKOVSKY
DRAWN:	S. KOZLOWSKI
CHECKED:	A. SIPKOVSKY
SCALE:	1"=300'
DATE:	10/20/2021

FINAL RFC PLANS		DWG NO.	N-CI01-MTPL-04
MAINTENANCE OF TRAFFIC DETOUR PLAN - SIBLEY STREET			
FOR CONSTRUCTION		SHEET NO.	14 OF 78