



**F. H. PASCHEN  
RAGNAR BENSON**  
JOINT VENTURE



---

## **NICTD West Lake Corridor Project Construction Update**

**Week of 11.21.22 and 11.28.22**

### **Hammond**

- Utility Relocation, Sewer & Water
  - Electrical work at future South Hammond Station.
  - Water Main installation at future Hammond Gateway Station.
  - Carrol Street/Lyman Avenue
    - Drainage Installation
    - Follow Posted Detours
  - Condit Street/Lyman Avenue
    - Drainage Installation
    - Follow Posted Detours
  - Ogden Avenue/Lyman Avenue
    - Drainage Installation
    - Follow Posted Detours
- Monon Trail Closure
  - Monon closed from Douglas Street to 173<sup>rd</sup> Street.
- Roadway Work
  - Pouring concrete at future South Hammond Station (173<sup>rd</sup> Street)
    - Trucking operations on 173<sup>rd</sup> Street, minimal impact to vehicular traffic.
  - Asphalt Paving at future South Hammond Station (173<sup>rd</sup> Street)
    - Trucking operations on 173<sup>rd</sup> Street, minimal impact to vehicular traffic.
  - Conkey Street
    - Finishing Intersection construction on 11/22/22.
    - Will be pouring concrete on 11/21/22.
- Earthwork
  - Excavation continues at Conkey/Blaine Intersection.
    - Trucking operations through City of Hammond roadways, minimal impact to vehicular traffic.
  - Excavation from Douglas Street to Waltham Street.
    - Trucking operations through City of Hammond roadways, minimal impact to vehicular traffic.
- Future Hammond Station (Station off Sheffield Avenue)
  - Excavation continues at Future Hammond Station

- Trucking operations through City of Hammond roadways, minimal impact to vehicular traffic.
  - Removal of existing utilities
  - Installation of underground utilities
  - Hanover Street will be permanently closed between Wabash and Sheffield Avenues.
  - Dearborn at Gostlin Street will be closed permanently.
- Substructure Work for Bridges, Elevated Structures, and Retaining Walls
  - Michigan/Hohman.
    - Lane Restriction at Michigan/Hohman for the week of November 28<sup>th</sup>
      - ⑩ Northbound Lane closure begins on November 28<sup>th</sup> until November 30<sup>th</sup>
      - ⑩ Southbound Lane closure begins on November 30<sup>th</sup> until December 2<sup>nd</sup>.
      - ⑩ Road Closure Drawings are attached.
  - Framing of pier structures at Hohman/Sibley.
  - Blaine Avenue Retaining Wall
    - Earth excavation and wall construction between Kenwood and 165<sup>th</sup> Street
    - On-going through week of November 28<sup>th</sup>.

### **Munster**

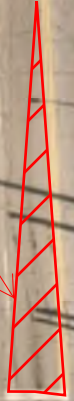
- NIPSCO & Telecommunications Relocations.
- Retaining Wall excavation/framing continues along Manor Ave. North and South of Broadmoor.
  - Trucking operations through the Town of Munster, minimal impact to vehicular traffic.
- Monon Trail will be closed for the foreseeable future from Little Calumet River to Ridge Road.
- Structure work at the Little Calumet River.
  - Trucking operations on Manor Avenue, minimal impact to vehicular traffic.
- Structure work to begin South of Fisher Street.
  - No impact to vehicular traffic.
- Site Excavation at Future Munster-Dyer Station.
  - Trucking operations along Columbia Avenue in Munster.
- Drainage Installation at Munster-Dyer Station
- Water main Installation at Munster-Dyer West Parking Lot
- Landscape seeding at Munster-Dyer West Parking Lot

### **Dyer**

- No work anticipated for this time period.

**For additional project information please visit:  
[www.nictdwestlake.com](http://www.nictdwestlake.com) or [www.fhp-rb.com](http://www.fhp-rb.com)**

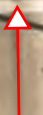
**NO LEFT TURN  
SIGN w/ DETOUR  
SIGNAGE**



**BENT 51  
PILE DRIVING AND  
CAISSON  
WORK ZONE**

**BENT 51  
WORK ZONE LIMITS**

**NO RIGHT TURN  
AHEAD SIGN w/  
DETOUR SIGNAGE**



EASTBOUND MICHIGAN & SOUTHBOUND HOHMAN DETOUR



EASTBOUND MICHIGAN & NORTHBOUND HOHMAN DETOUR





NO RIGHT TURN  
AHEAD SIGN w/  
DETOUR SIGNAGE

Mon Mar 21 2022

Imagery © 2022 Nearmap, Inc.

200 ft

nearmap

**BENT 52**

**PILE DRIVING AND  
CAISSON  
WORK ZONE**

**NO LEFT TURN  
SIGN w/ DETOUR  
SIGNAGE**



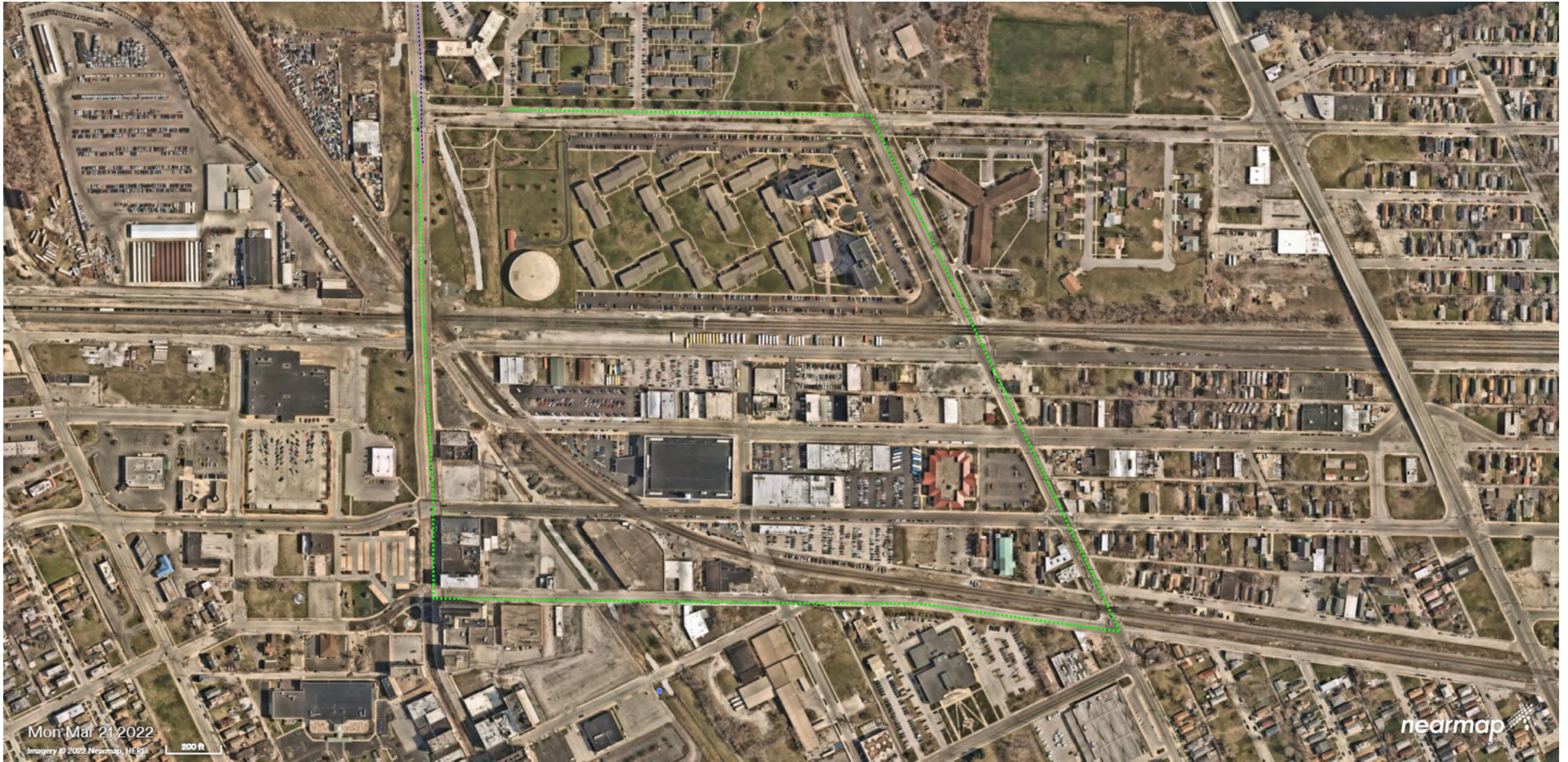
EASTBOUND MICHIGAN & SOUTHBOUND HOHMAN DETOUR



EASTBOUND MICHIGAN & NORTHBOUND HOHMAN DETOUR







Mon Mar 21 2022

Imagery © 2022 Nearmap, HERE

200 ft

nearmap